

# CORNER RECORD

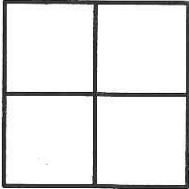
Agency Index CR-17-134

Document Number \_\_\_\_\_

City of Lathrop

County of San Joaquin, California

Brief Legal Description Monument at intersection of McKinley Avenue & Louise Avenue.



**CORNER TYPE**

Government Corner  Control   
 Meander  Property   
 Rancho  Other

Date of Survey \_\_\_\_\_

**COORDINATES (Optional)**

N. \_\_\_\_\_ E. \_\_\_\_\_

Elevation \_\_\_\_\_

Units Metric  U.S. Survey Foot

Horizontal Datum \_\_\_\_\_

Zone \_\_\_\_\_ Epoch Date \_\_\_\_\_

Vertical Datum \_\_\_\_\_

Complies with Public Resources Code §§8801-8819

Complies with Public Resources Code §§8890-8902

PLS Act Ref:  8765(d)  8771  8773  Other: \_\_\_\_\_

Corner/Monument:  Left as found  Established  Rebuilt  Pre-Construction  
 Found and tagged  Reestablished  Referenced  Post-Construction

Narrative of corner identified and monument as found, set, reset, replaced, or removed:

See sheet #2 for description(s) :

**Found 2 1/2" brass disk with punch & stamp, illegible, inside monument well.  
 At the intersection of East Louise Avenue and McKinley Avenue.**

**SURVEYOR'S STATEMENT**

This Corner Record was prepared by me or under my direction in conformance with  
 the Professional Land Surveyors' Act on April 19, 2017

Signed [Signature] P.L.S. or R.C.E. No. 8654



**COUNTY SURVEYOR'S STATEMENT**

This Corner Record was received April 21, 2017

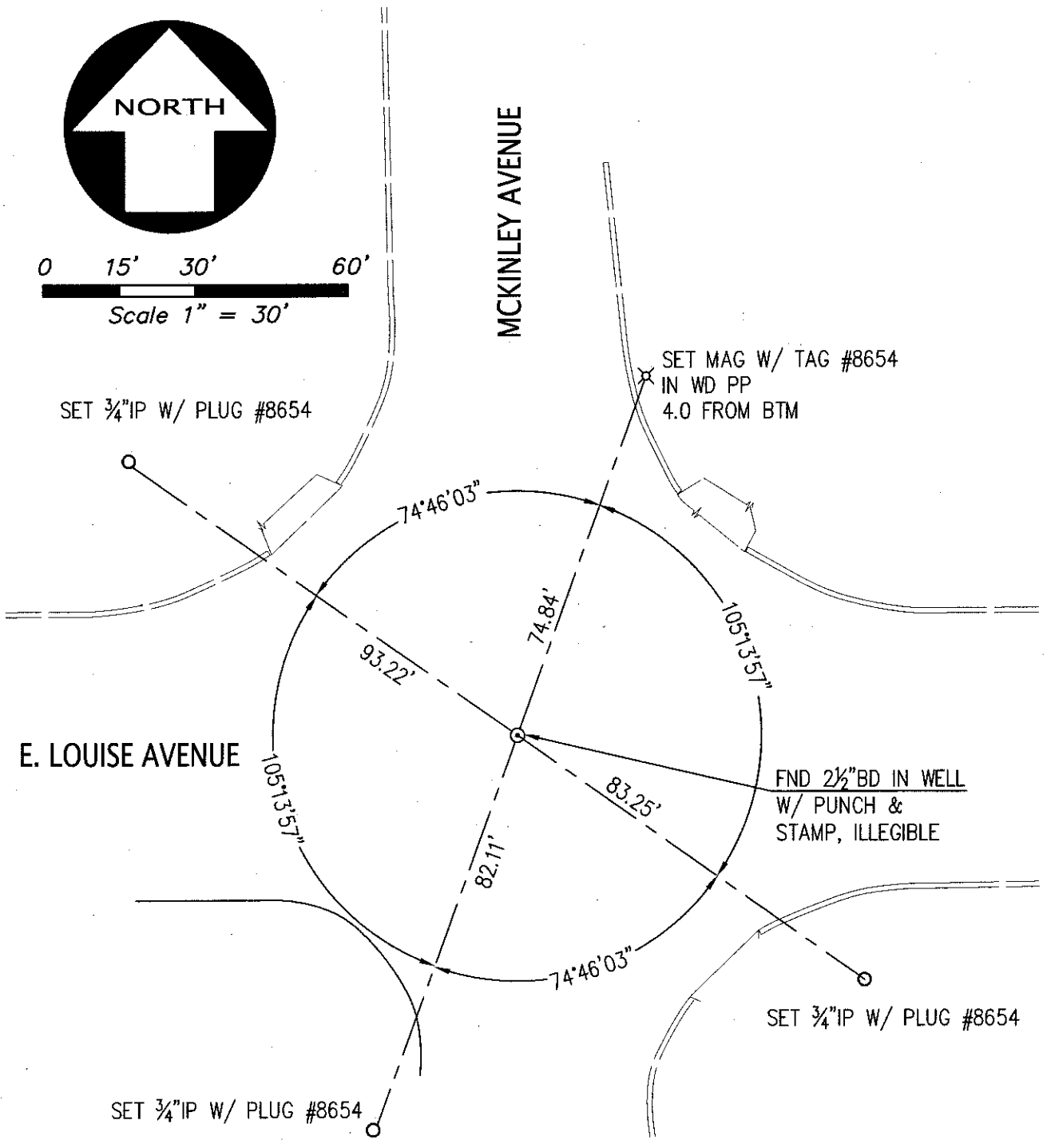
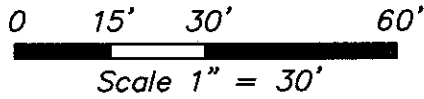
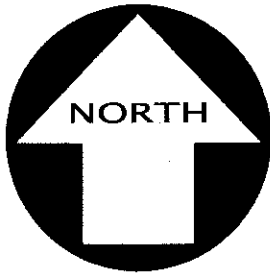
and examined and filed May 18, 2017

Signed [Signature] P.L.S. or R.C.E. No. 4842

Title County Surveyor

County Surveyor's Comment \_\_\_\_\_





**ABBREVIATIONS**

BD	BRASS DISK
BTM	BOTTOM
IP	IRON PIPE
PP	POWER POLE
WD	WOOD

**LEGEND**

SET NAIL	⊗
SET IRON PIPE	○
FND MONUMENT	⊙
ASPHALT BERM	====
CURB	=====
EDGE OF PAVEMENT	-----