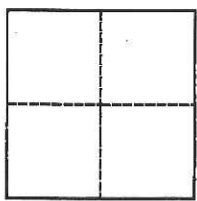


CORNER RECORD

Agency Index CR-17-131
Document Number _____

City of Tracy County of San Joaquin, California
Brief Legal Description Monument at intersection of Holly Drive and Arbor Avenue.



CORNER TYPE

Government Corner Control Elevation _____
 Meander Property Units Metric U.S. Survey Foot
 Rancho Other Horizontal Datum _____
 Date of Survey March 24, 2017 Zone _____ Epoch Date _____
 Vertical Datum _____
 Complies with Public Resources Code §§8801-8819
 Complies with Public Resources Code §§8890-8902

PLS Act Ref.: 8765(d) 8771 8773 Other: _____

Corner/Monument: Left as found Established Rebuilt Pre-Construction
 Found and tagged Reestablished Referenced Post-Construction

Narrative of corner identified and monument as found, set, reset, replaced, or removed:
 See sheet #2 for description(s):

Found 3" brass disk with punch inside monument well.

SURVEYOR'S STATEMENT

This Corner Record was prepared by me or under my direction in conformance with
the Professional Land Surveyors' Act on March 28, 2017

Signed Richard J. Hickenbottom P.L.S. or R.C.E. No. 8654



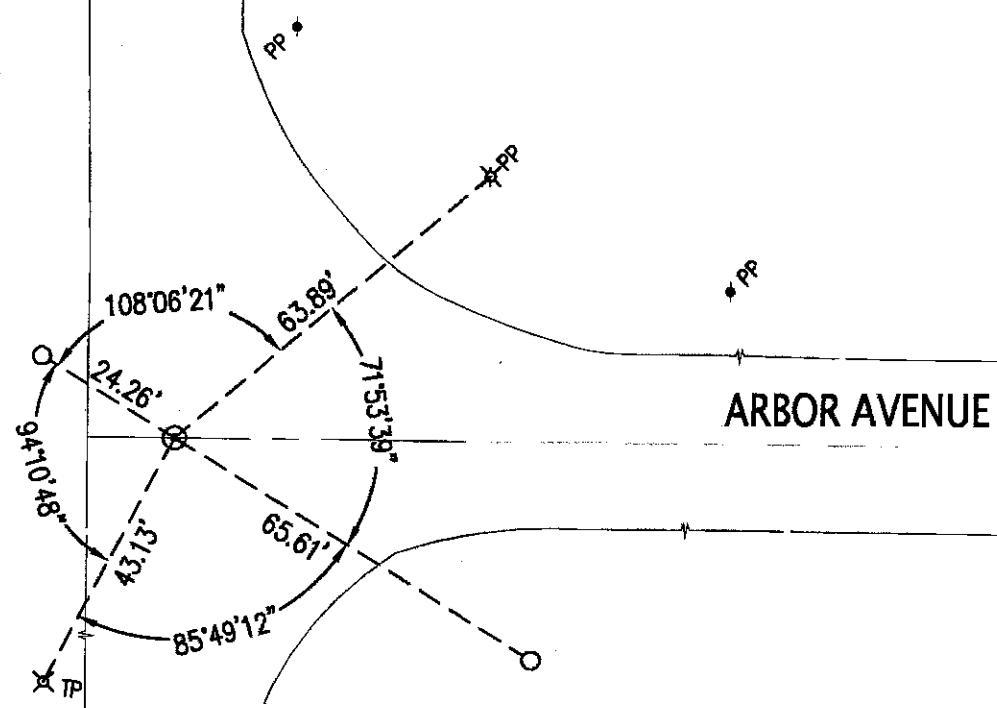
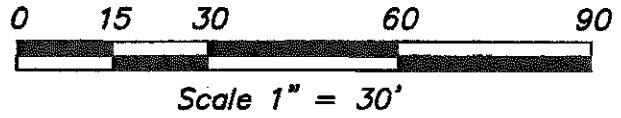
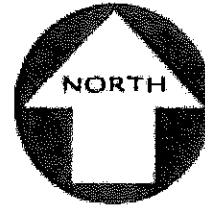
COUNTY SURVEYOR'S STATEMENT

This Corner Record was received April 17, 2017
and examined and filed May 18, 2017

Signed Warren D. Smith P.L.S. or R.C.E. No. 4842
Title County Surveyor



County Surveyor's Comment



HOLLY DRIVE

ARBOR AVENUE

LEGEND

- X SET NAIL W/ TAG "LS8654"
- O SET IRON PIPE W/ PLUG "LS8654"
- ⊙ MONUMENT
- PP POWER POLE
- ⊠ TELEPHONE POLE
- EDGE OF PAVEMENT