

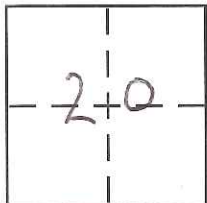
**CORNER RECORD**

Document Number CR-17-105

City of RIPON

County of SAN JOAQUIN, California

Brief Legal Description PORTION OF LOT 180 -- 25 MAP 125



T.2S, R.8E

**CORNER TYPE**

Government Corner  Control   
Meander  Property   
Rancho  Other   
Date of Survey 1/27 & 2/6/17

**COORDINATES (Optional)**

N. \_\_\_\_\_  
E. \_\_\_\_\_  
Zone \_\_\_\_\_ NAD27  NAD83   
NAD83 Epoch \_\_\_\_\_  
Elev. \_\_\_\_\_  
Vert. Datum: NGVD29  NAVD88   
Meas. Units: Metric  Imperial

Corner - Left as found  Found and tagged  Established  Reestablished  Rebuilt

Identification and type of corner found: Evidence used to identify or procedure used to establish or reestablish the corner:

SEE SKETCH ON BACK.

A description of the physical condition of the monument as found and as set or reset:

SEE SKETCH ON BACK.

**SURVEYOR'S STATEMENT**

This Corner Record was prepared by me or under my direction in conformance with

the Land Surveyor's Act on MARCH 27, 2017

Signed Michael Turnore (P.L.S. or R.C.E. No. 7454)



**COUNTY SURVEYOR'S STATEMENT**

This Corner Record was received March 29, 2017

and examined and filed May 2, 2017

Signed Warren D. Smith P.L.S. or R.C.E. No. 4842

Title County Surveyor



County Surveyor's Comment \_\_\_\_\_

\_\_\_\_\_

\_\_\_\_\_

\_\_\_\_\_

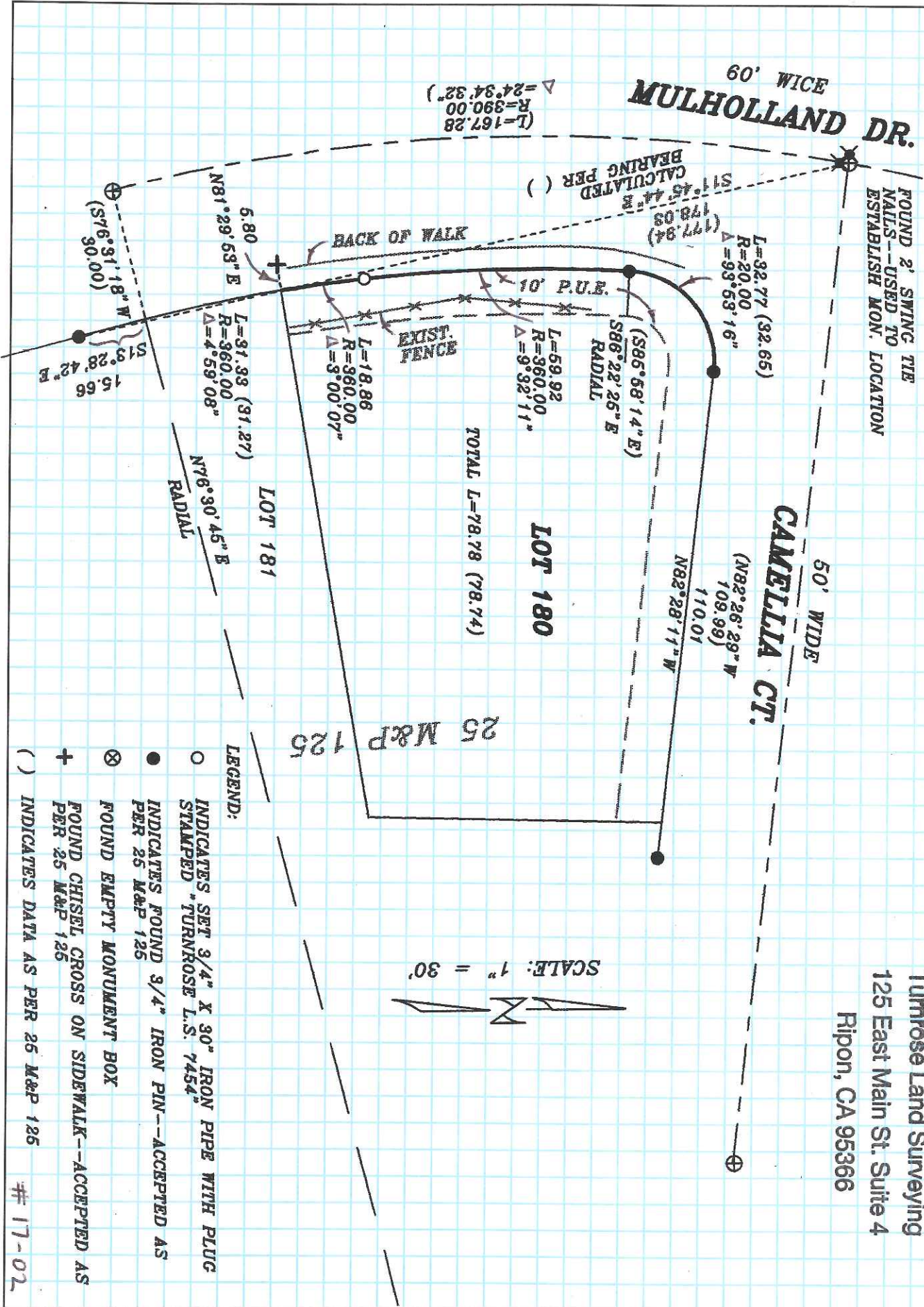
\_\_\_\_\_

MULHOLLAND DR. 60' WICE

FOUND 2' SWING TIE  
NAILS--USED TO  
ESTABLISH MON. LOCATION

CAMELLIA CT. 50' WIDE

Tumrose Land Surveying  
125 East Main St. Suite 4  
Ripon, CA 95366



TOTAL L=78.78 (78.74)

SCALE: 1" = 30'



LEGEND:

- INDICATES SET 3/4" X 30" IRON PIPE WITH PLUG STAMPED \*TURNROSE L.S. 7454\*
- INDICATES FOUND 3/4" IRON PIN--ACCEPTED AS PER 25 M&P 126
- ⊗ FOUND EMPTY MONUMENT BOX
- + FOUND CHISEL CROSS ON SIDEWALK--ACCEPTED AS PER 25 M&P 126
- ( ) INDICATES DATA AS PER 25 M&P 126

# 17-02