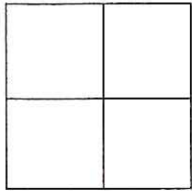


CORNER RECORD

Document Number CR-17-86
 County of San Joaquin, California

City of _____

Brief Legal Description SEXTON ROAD 910± NORTH OF LONE OAK ROAD
 (ON WEST LINE OF SECTION 18, TOWNSHIP 2 SOUTH, RANGE 9 EAST, MOUNT DIABLO BASE & MERIDIAN)



CORNER TYPE

Government Corner Control
 Meander Property
 Rancho Other
 Date of Survey December 13, 2016

COORDINATES (Optional)

N. _____
 E. _____
 Zone _____ NAD27 NAD83
 NAD83 Epoch _____
 Elev. _____
 Vert. Datum: NGVD29 NAVD88
 Meas. Units: Metric Imperial

Corner - Left as found Found and tagged Established Reestablished Rebuilt

Identification and type of corner found: Evidence used to identify or procedure used to establish or reestablish the corner:
 SEE SKETCH ON BACKSIDE.

A description of the physical condition of the monument as found and as set or reset:
 SEE SKETCH ON BACKSIDE.

SURVEYOR'S STATEMENT

This Corner Record was prepared by me or under my direction in conformance with the Land Surveyors' Act on March 27, 2017.

Signed James E. Hart P.L.S. Number 8657

COUNTY SURVEYOR'S STATEMENT

This Corner Record was received March 27, 2017 and examined and filed April 18, 2017.

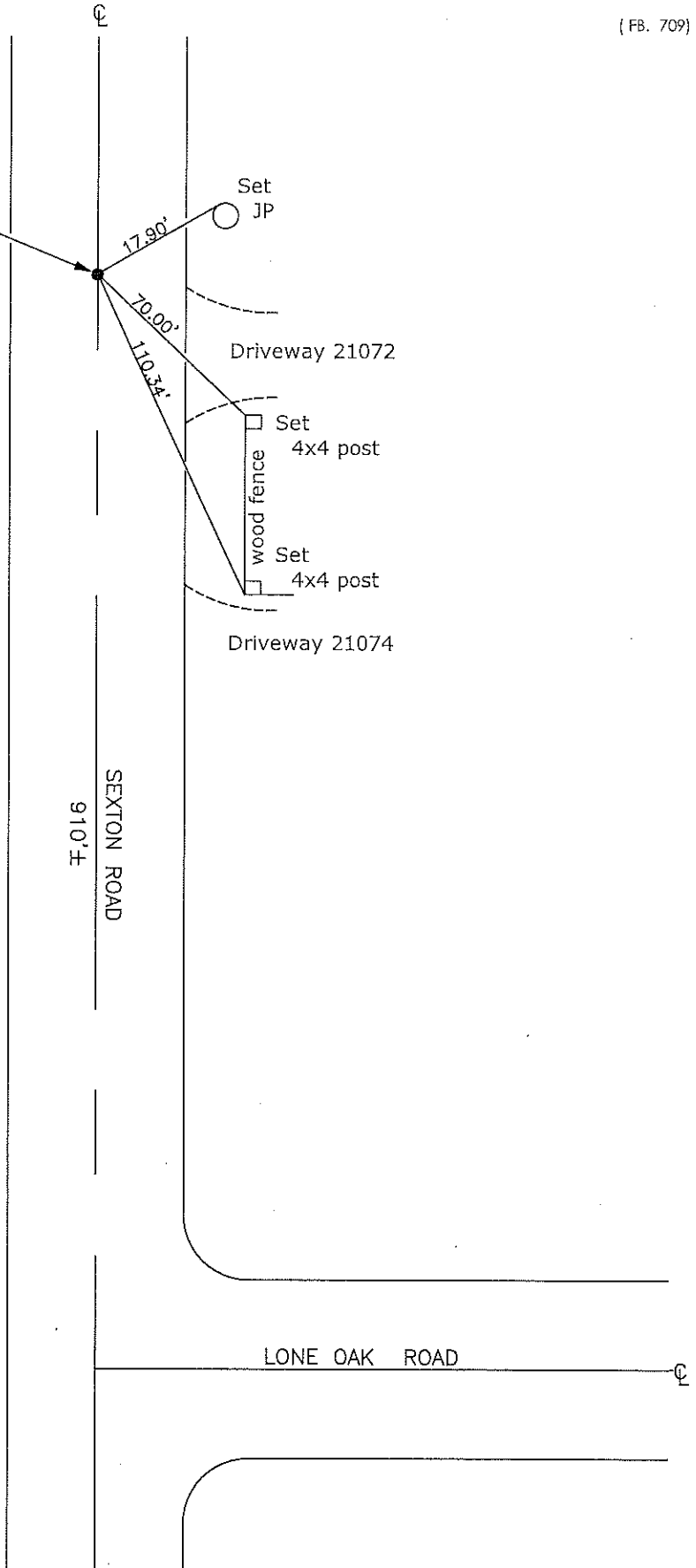
Signed Warren D. Smith P.L.S. No. 4842
 Title County Surveyor

County Surveyor's Comment _____





Fd. RR Spike per
RS 12-111



Note: Found Monuments are not tagged unless otherwise noted.

"No Attempt Was Made to Verify the Monument(s)"

Set=Conc. Nail with Brass Washer Stamped
"S.J. Co.", unless otherwise noted
Fd.=Found Conc. Nail with Brass Washer Stamped
"S.J. Co.", unless otherwise noted

CR=Corner Record
FP=Fence Post
JP=Joint Pole
LP=Light Pole
PP=Power Pole
GP=Guy Pole
SP=Service Pole
TP=Telephone Pole
S.F.N.=Searched Found Nothing
N.T.S.=Not To Scale
M&P=Maps & Plats
PM=Parcel Map
RS=Record of Survey
FB=Field Book
N=North
DI=Drain Inlet
TOC=Top of Curb