

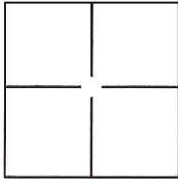
# CORNER RECORD

Document Number CR-17-78

City of Stockton

County of San Joaquin, California

Brief Legal Description Projection of South lot line of Lot 147, 21 M.P. 24 at the East end thereof.



### CORNER TYPE

Government Corner  Control   
Meander  Property   
Rancho  Other

Date of Survey January 24, 2017

### COORDINATES(Optional)

N. \_\_\_\_\_  
E. \_\_\_\_\_  
Zone \_\_\_\_\_ NAD27  NAD83   
NAD83 Epoch \_\_\_\_\_  
Elev. \_\_\_\_\_  
Vert. Datum: NGVD29  NADV88   
Meas. Units: Metric  Imperial

Corner - Left as found  Found and tagged  Established  Reestablished  Rebuilt

Identification and type of corner found: Evidence used to identify or procedure used to establish or reestablish the corner:

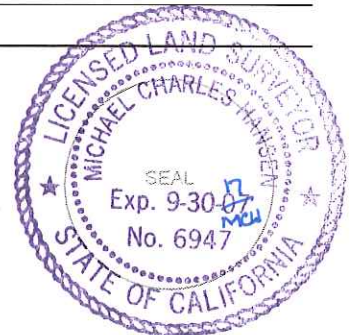
The Southerly lot line of Lot 147 was established based on found centerline monuments and record data per 21 M.P. 24.

A description of the physical condition of the monument as found and as set or reset: Set 1" brass disc stamped "LS 6947" in concrete sidewalk at six foot projection of lot line.

### SURVEYOR'S STATEMENT

This Corner Record was prepared by me or under my direction in conformance with the Land Surveyor's Act on January 27, 2017.

Signed [Signature] P.L.S. or R.C.E. No.: L.S. 6947



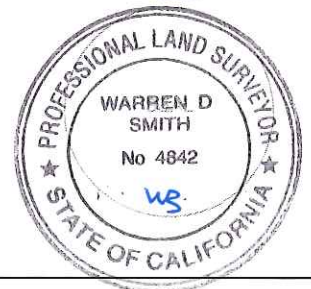
### COUNTY SURVEYOR'S STATEMENT

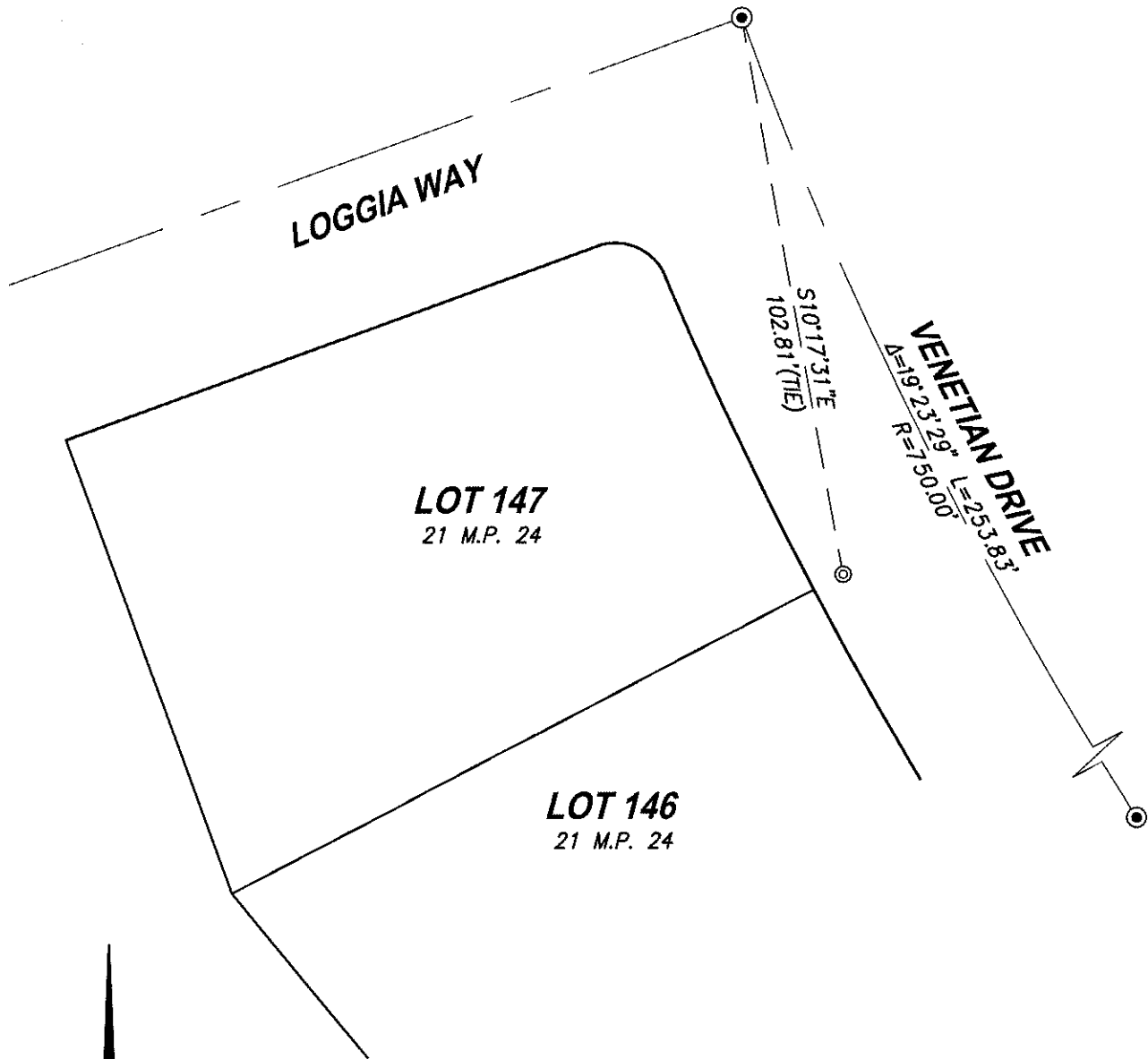
This Corner Record was received February 2, 2017 and examined and filed February 15, 2017.

Signed [Signature] P.L.S. or R.C.E. No.: 4842

Title County Surveyor

County Surveyor's Comment \_\_\_\_\_





**LOT 147**  
21 M.P. 24

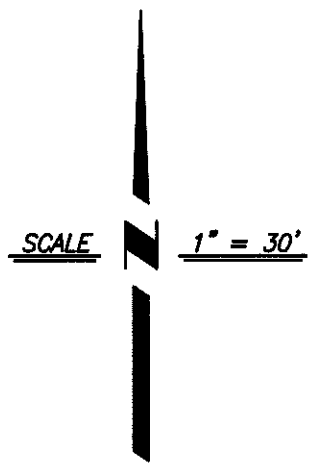
**LOT 146**  
21 M.P. 24

**LOGGIA WAY**

**VENETIAN DRIVE**

S10°17'31"E  
102.81' (TIE)

$\Delta = 19.23' 29''$   
 $R = 75000'$   
 $L = 2533.83'$



**LEGEND:**

- ⊙ — SET 1" BRASS DISC "LS 6947" IN SIDEWALK AT 6.00' PROJECTION OF LOT LINE BASED ON FOUND CENTERLINE MONUMENTS AND RECORD DATA.
- ⊙ — FOUND 3/4" REBAR IN MONUMENT WELL PER 21 M.P. 24
- M.P. — MAPS & PLATS

**CenterPoint Engineering, Inc.**

Civil Engineering & Land Surveying  
1217 Pleasant Grove Blvd. Suite 130 • Roseville, CA • 95678  
Phone: 916-773-4006 Fax: 916-773-4498



DRAWN BY: BB

CHECKED BY: MH

SHEET: 2 OF 2

SCALE: 1" = 30'

DATE: 1-27-2017