

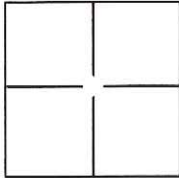
CORNER RECORD

Document Number CR-17-74

City of Stockton

County of San Joaquin, California

Brief Legal Description Projection of NW lot line of Lot 105, 26 M.P. 61 at the NE end thereof.



CORNER TYPE

Government Corner Control
Meander Property
Rancho Other

Date of Survey January 24, 2017

COORDINATES(Optional)

N. _____
E. _____
Zone _____ NAD27 NAD83
NAD83 Epoch _____
Elev. _____
Vert. Datum: NGVD29 NADV88
Meas. Units: Metric Imperial

Corner - Left as found Found and tagged Established Reestablished Rebuilt

Identification and type of corner found: Evidence used to identify or procedure used to establish or reestablish the corner:

The Northwest lot line of Lot 105 was established based on found centerline monuments and record data per 26 M.P. 61.

A description of the physical condition of the monument as found and as set or reset: Set 1" brass disc stamped "LS 6947" in concrete sidewalk at five foot projection of lot line.

SURVEYOR'S STATEMENT

This Corner Record was prepared by me or under my direction in conformance with the Land Surveyor's Act on January 27, 2017.

Signed [Signature] P.L.S. or R.C.E. No.: L.S. 6947



COUNTY SURVEYOR'S STATEMENT

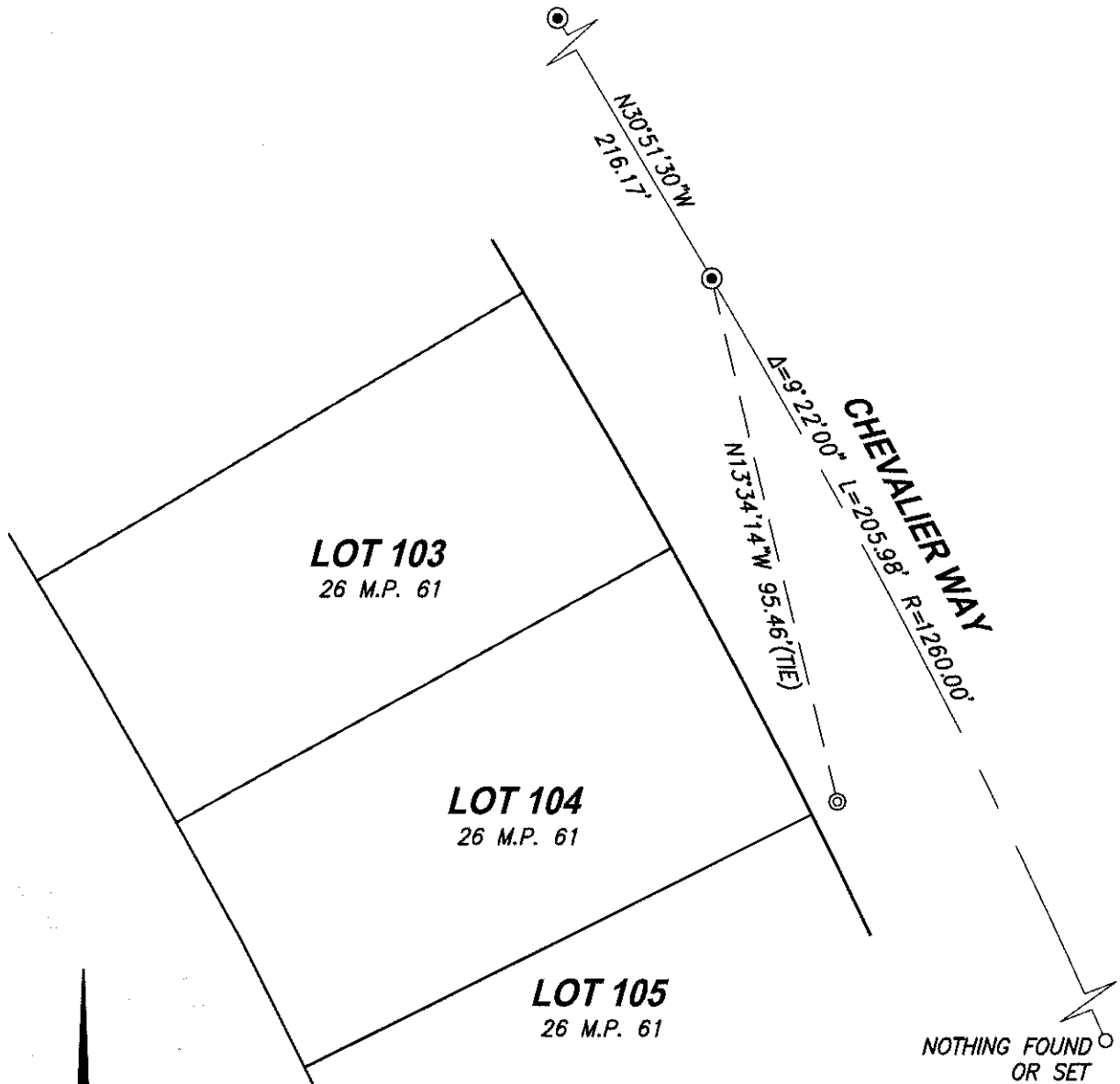
This Corner Record was received February 2, 2017 and examined and filed February 15, 2017.

Signed [Signature] P.L.S. or R.C.E. No.: 4842

Title _____

County Surveyor's Comment _____





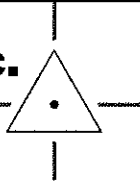
SCALE 1" = 30'

LEGEND:

- ⊙ - - SET 1" BRASS DISC "LS 6947" IN SIDEWALK AT 5.00' PROJECTION OF LOT LINE BASED ON FOUND CENTERLINE MONUMENTS AND RECORD DATA.
- ⊙ - - FOUND 3/4" REBAR IN MONUMENT WELL PER 26 M.P. 61
- M.P. - - MAPS & PLATS

CenterPoint Engineering, Inc.

Civil Engineering & Land Surveying
1217 Pleasant Grove Blvd. Suite 130 • Roseville, CA • 95678
Phone: 916-773-4006 Fax: 916-773-4498



DRAWN BY: BB
CHECKED BY: MH
SHEET: 2 OF 2
SCALE: 1" = 30'
DATE: 1-27-2017