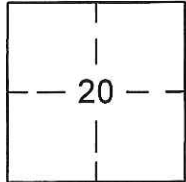


# CORNER RECORD

Document Number CR-17-71  
County of SAN JOAQUIN, California

City of RIPON

Brief Legal Description PORTION OF NORTH 1/2 OF SECTION 20, T. 2 S., R. 8 E., M.D.M.



T. 2 S., R. 8 E.

### CORNER TYPE:

Government Corner  Control   
Meander  Property   
Rancho  Other

Date of Survey DECEMBER 9, 2016

### COORDINATES (Optional)

N. \_\_\_\_\_  
E. \_\_\_\_\_  
Zone \_\_\_\_\_ NAD27  NAD83   
NAD83 Epoch \_\_\_\_\_  
Elev. \_\_\_\_\_  
Vert. Datum: NGVD29  NAVD88   
Meas. Units Metric  Imperial

Corner- Left as found  Found and tagged  Established  Reestablished  Rebuilt

Identification and type of corner found: Evidence used to identify or procedure used to establish or reestablish the corner:

FOUND CENTERLINE MONUMENTS IN EASTBURG COURT, HELEN DRIVE AND AZALEA STREET.  
LOCATED MONUMENT BY G.P.S. TIED TO CITY OF RIPON G.P.S. SURVEY CONTROL NETWORK  
RECORDED IN BOOK 35 OF SURVEYS, PAGE 196, SAN JOAQUIN COUNTY RECORDS.  
MONUMENTS SURVIVED ROAD RESURFACING.

A description of the physical condition of the monument as found and as set or reset:

SEE PAGE 2 FOR MONUMENT DESCRIPTIONS. FOUND MONUMENTS IN SAME CONDITION AS  
SHOWN ON CORNER RECORD 16-451, AFTER ROAD RESURFACING.

### SURVEYOR'S STATEMENT

This Corner Record was prepared by me or under my direction in conformance with the Land Surveyor's Act on December 30, 2016.

Signed Sean Harp P.L.S. No. 7823



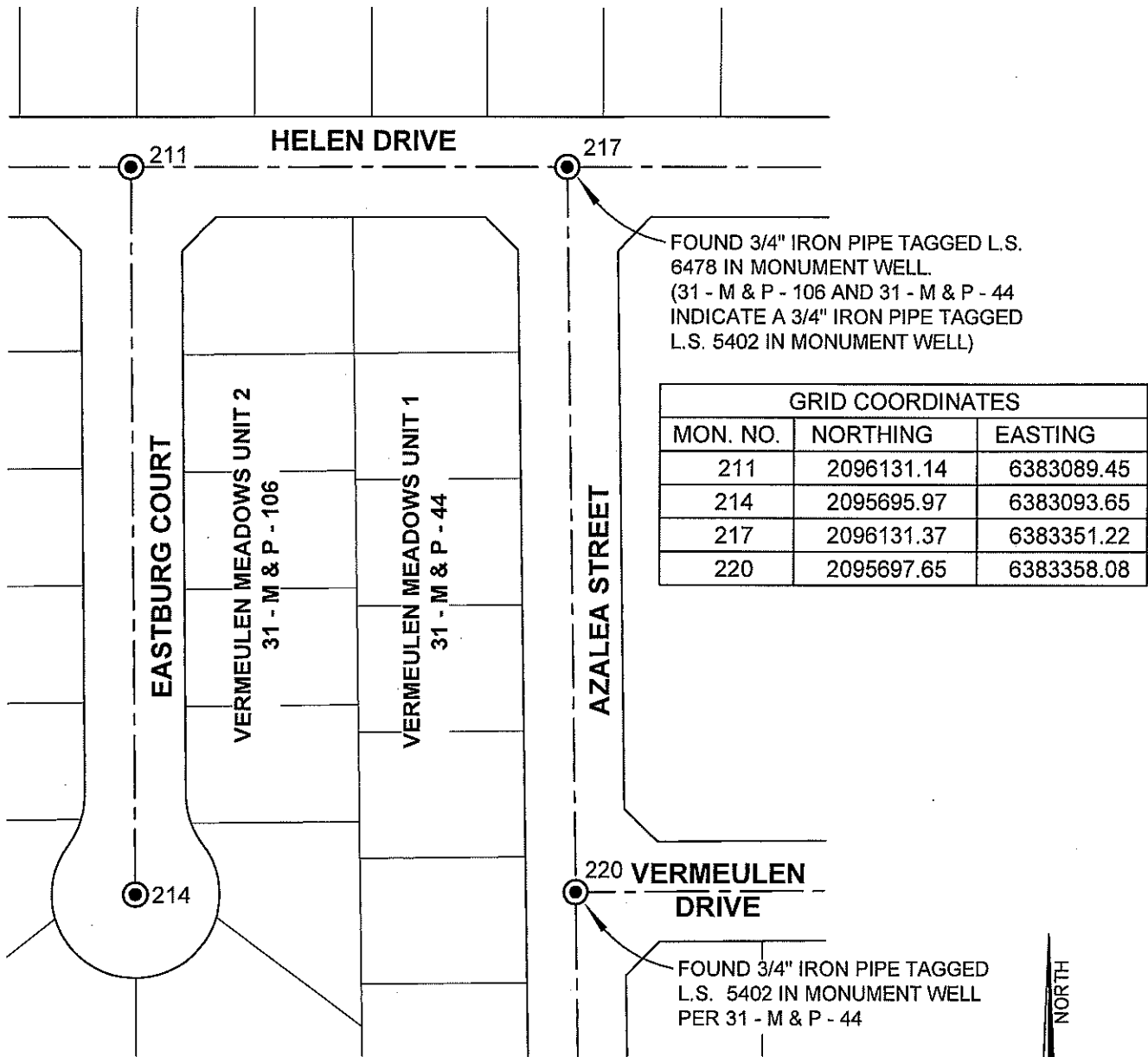
### COUNTY SURVEYOR'S STATEMENT

This Corner Record was received January 5, 2017 and examined and filed January 30, 2017.

Signed Warren D. Smith P.L.S. or R.C.E. No. 4842  
Title County Surveyor



County Surveyor's Comment: \_\_\_\_\_  
\_\_\_\_\_  
\_\_\_\_\_



**NOTE:**  
LOCATED MONUMENTS BY G.P.S. TIED TO CITY OF RIPON G.P.S.  
SURVEY CONTROL NETWORK RECORDED IN BOOK 35 OF  
SURVEYS, PAGE 196, SAN JOAQUIN COUNTY RECORDS.

SCALE 1" = 100'

**LEGEND**

- FOUND 3/4" IRON PIPE TAGGED L.S. 6478 IN MONUMENT WELL PER 31 OF MAPS & PLATS, 106, UNLESS OTHERWISE NOTED.

