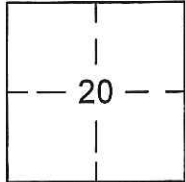


CORNER RECORD

Document Number CR-17-69
County of SAN JOAQUIN, California

City of RIPON

Brief Legal Description PORTION OF NORTH 1/2 OF SECTION 20, T. 2 S., R. 8 E., M.D.M.



T. 2 S., R. 8 E.

CORNER TYPE:

Government Corner Control
Meander Property
Rancho Other

Date of Survey DECEMBER 9, 2016

COORDINATES (Optional)

N. _____
E. _____
Zone _____ NAD27 NAD83
NAD83 Epoch _____
Elev. _____
Vert. Datum: NGVD29 NAVD88
Meas. Units Metric Imperial

Corner- Left as found Found and tagged Established Reestablished Rebuilt

Identification and type of corner found: Evidence used to identify or procedure used to establish or reestablish the corner:

FOUND CENTERLINE MONUMENTS IN NANCY DRIVE, JORDANOLO DRIVE, AZALEA STREET AND
MANLEY ROAD.

LOCATED MONUMENT BY G.P.S. TIED TO CITY OF RIPON G.P.S. SURVEY CONTROL NETWORK

RECORDED IN BOOK 35 OF SURVEYS, PAGE 196, SAN JOAQUIN COUNTY RECORDS.

MONUMENTS SURVIVED ROAD RESURFACING.

A description of the physical condition of the monument as found and as set or reset:

SEE PAGE 2 FOR MONUMENT DESCRIPTIONS. FOUND MONUMENTS IN SAME CONDITION AS
SHOWN ON CORNER RECORD 16-449, AFTER ROAD RESURFACING.

SURVEYOR'S STATEMENT

This Corner Record was prepared by me or under my direction in conformance with the Land Surveyor's Act on December 30, 2016.

Signed Sean Harp P.L.S. No. 7823

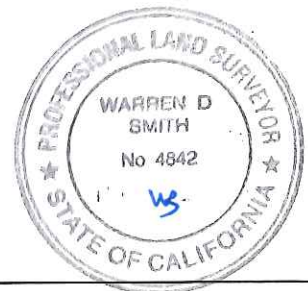


COUNTY SURVEYOR'S STATEMENT

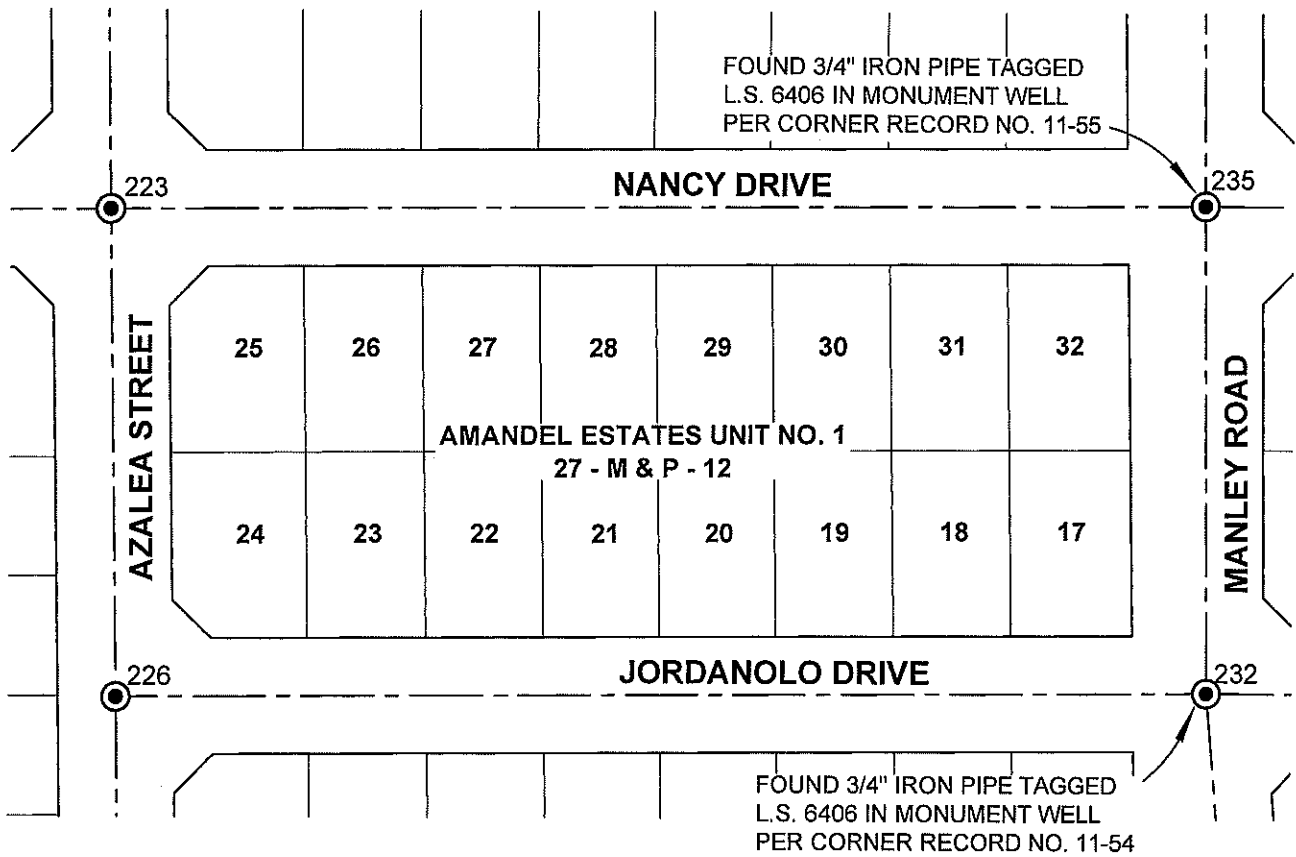
This Corner Record was received January 5, 2017 and examined and filed January 30, 2017.

Signed Warren D. Smith P.L.S. or R.C.E. No. 4842

Title County Surveyor



County Surveyor's Comment: _____



GRID COORDINATES		
MON. NO.	NORTHING	EASTING
223	2095439.66	6383362.16
226	2095187.65	6383366.08
232	2095191.21	6383933.93
235	2095443.21	6383932.12

NOTE:
LOCATED MONUMENTS BY G.P.S. TIED TO CITY
OF RIPON G.P.S. SURVEY CONTROL NETWORK
RECORDED IN BOOK 35 OF SURVEYS, PAGE
196, SAN JOAQUIN COUNTY RECORDS.

LEGEND

- FOUND 3/4" IRON PIPE TAGGED L.S. 4876 IN MONUMENT WELL PER BOOK 27 OF MAPS & PLATS, PAGE 12, UNLESS OTHERWISE NOTED.



SCALE 1" = 100'