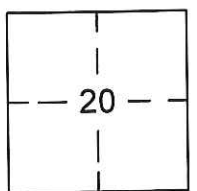


CORNER RECORD

Document Number CR-17-65
County of SAN JOAQUIN, California

City of RIPON

Brief Legal Description TRACT NO. 2089, OLIVE GROVE ESTATES UNIT NO. 2, RECORDED IN BOOK 28 OF MAPS & PLATS, PAGE 20, IN S.E. 1/4 OF SECTION 20, T. 2 S., R. 8 E., M.D.M.



T. 2 S., R. 8 E.

CORNER TYPE:

- Government Corner
- Meander
- Rancho
- Control
- Property
- Other

Date of Survey DECEMBER 8, 2016

COORDINATES (Optional)

- N. _____
- E. _____
- Zone _____ NAD27 NAD83
- NAD83 Epoch _____
- Elev. _____
- Vert. Datum: NGVD29 NAVD88
- Meas. Units: Metric Imperial

Corner- Left as found Found and tagged Established Reestablished Rebuilt

Identification and type of corner found: Evidence used to identify or procedure used to establish or reestablish the corner:
FOUND CENTERLINE MONUMENTS IN BOGARIN LANE AND COUNTRY CLUB CIRCLE PER OLIVE GROVE ESTATES UNIT NO. 2 RECORDED IN BOOK 28 OF MAPS & PLATS, PAGE 20, SAN JOAQUIN COUNTY RECORDS. LOCATED MONUMENTS BY G.P.S. TIED TO CITY OF RIPON G.P.S. SURVEY CONTROL NETWORK RECORDED IN BOOK 35 OF SURVEYS, PAGE 196, SAN JOAQUIN COUNTY RECORDS. MONUMENTS SURVIVED ROAD RESURFACING.

A description of the physical condition of the monument as found and as set or reset:
SEE PAGE 2 FOR MONUMENT DESCRIPTIONS. FOUND MONUMENTS IN SAME CONDITION AS SHOWN ON CORNER RECORD 16-457, AFTER ROAD RESURFACING.

SURVEYOR'S STATEMENT

This Corner Record was prepared by me or under my direction in conformance with the Land Surveyor's Act on December 30, 2016.
Signed [Signature] P.L.S. No. 7823

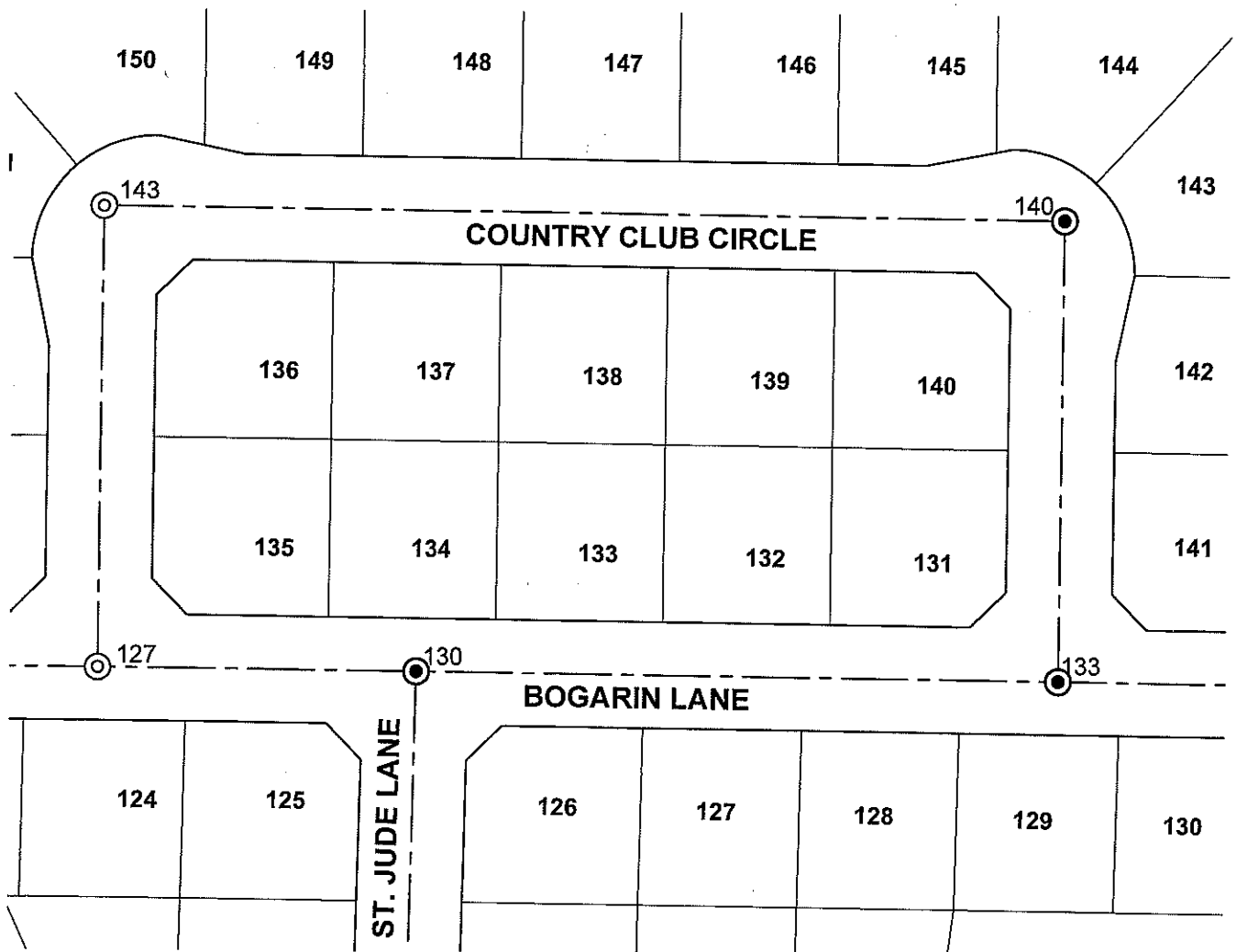


COUNTY SURVEYOR'S STATEMENT

This Corner Record was received January 5, 2017 and examined and filed January 30, 2017.
Signed [Signature] P.L.S. or R.C.E. No. 4842
Title County Surveyor



County Surveyor's Comment: _____



GRID COORDINATES		
MON. NO.	NORTHING	EASTING
127	2094380.11	6384206.49
130	2094378.59	6384386.45
133	2094375.65	6384751.39
140	2094635.59	6384752.44
143	2094640.06	6384207.55



SCALE 1" = 100'

NOTE:
 LOCATED MONUMENTS BY G.P.S. TIED TO CITY OF RIPON G.P.S.
 SURVEY CONTROL NETWORK RECORDED IN BOOK 35 OF
 SURVEYS, PAGE 196, SAN JOAQUIN COUNTY RECORDS.

LEGEND

- FOUND 3/4" IRON PIPE TAGGED L.S. 5123 IN MONUMENT WELL PER (B), UNLESS OTHERWISE NOTED.
- FOUND 3/4" IRON PIPE (B), NO TAG, IN MONUMENT WELL, UNLESS OTHERWISE NOTED.
- (B) BOOK 28 OF MAPS AND PLATS, PAGE 20