

CORNER RECORD

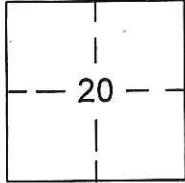
Document Number CR-17-63
County of SAN JOAQUIN, California

City of RIPON

Brief Legal Description TRACT NO. 2089, OLIVE GROVE ESTATES UNIT NO. 2, RECORDED IN BOOK 28 OF MAPS & PLATS, PAGE 20, IN S.E. 1/4 OF SECTION 20, T. 2 S., R. 8 E., M.D.M.

CORNER TYPE:

COORDINATES (Optional)



T. 2 S., R. 8 E.

Government Corner Control
Meander Property
Rancho Other

Date of Survey DECEMBER 8, 2016

N. _____
E. _____
Zone _____ NAD27 NAD83
NAD83 Epoch _____
Elev. _____
Vert. Datum: NGVD29 NAVD88
Meas. Units Metric Imperial

Corner- Left as found Found and tagged Established Reestablished Rebuilt

Identification and type of corner found: Evidence used to identify or procedure used to establish or reestablish the corner:

FOUND CENTERLINE MONUMENTS IN RUBY COURT AND OPAL LANE PER OLIVE GROVE ESTATES UNIT NO. 2 RECORDED IN BOOK 28 OF MAPS & PLATS, PAGE 20, SAN JOAQUIN COUNTY RECORDS. LOCATED MONUMENTS BY G.P.S. TIED TO CITY OF RIPON G.P.S. SURVEY CONTROL NETWORK RECORDED IN BOOK 35 OF SURVEYS, PAGE 196, SAN JOAQUIN COUNTY RECORDS. MONUMENTS SURVIVED ROAD RESURFACING.

A description of the physical condition of the monument as found and as set or reset:

PAGE 2 FOR MONUMENT DESCRIPTIONS. FOUND MONUMENTS IN SAME CONDITION AS SHOWN ON CORNER RECORD 16-455, AFTER ROAD RESURFACING.

SURVEYOR'S STATEMENT

This Corner Record was prepared by me or under my direction in conformance with the Land Surveyor's Act on December 30, 2016.

Signed Sean Harp P.L.S. No. 7823



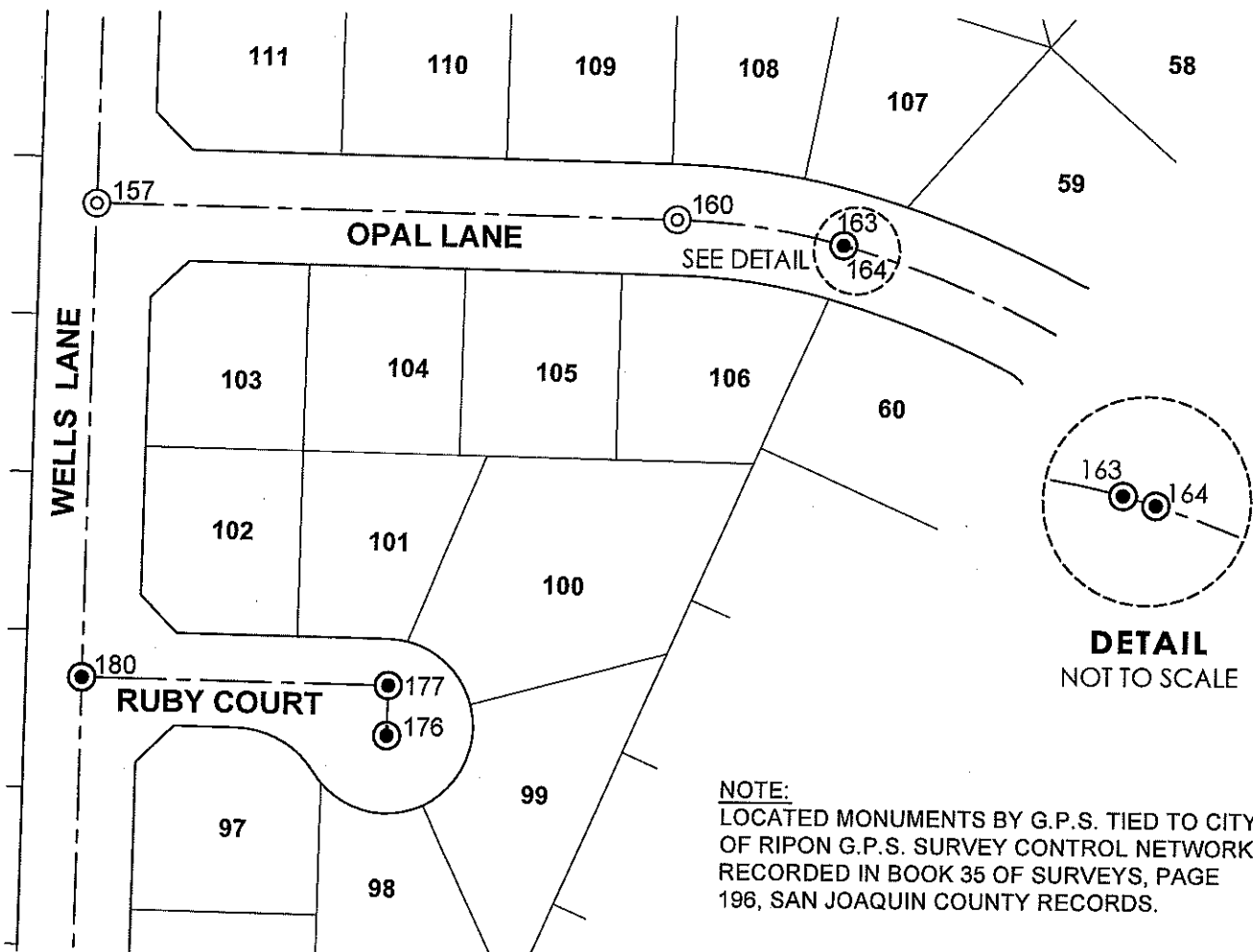
COUNTY SURVEYOR'S STATEMENT

This Corner Record was received January 5, 2017 and examined and filed January 30, 2017.

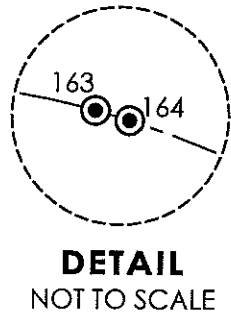
Signed Warren D. Smith P.L.S. or R.C.E. No. 4042
Title County Surveyor



County Surveyor's Comment: _____



GRID COORDINATES		
MON. NO.	NORTHING	EASTING
157	2093857.79	6384195.50
160	2093851.61	6384509.17
163	2093838.58	6384599.28
164	2093837.35	6384603.58
176	2093577.28	6384354.92
177	2093599.30	6384355.34
180	2093602.58	6384190.44



SCALE 1" = 100'

LEGEND

- FOUND 3/4" IRON PIPE TAGGED L.S. 5123 IN MONUMENT WELL PER (B), UNLESS OTHERWISE NOTED.
- FOUND 3/4" IRON PIPE (B), NO TAG, IN MONUMENT WELL, UNLESS OTHERWISE NOTED.
- (B) BOOK 28 OF MAPS AND PLATS, PAGE 20