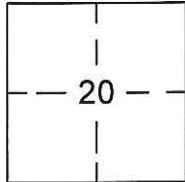


CORNER RECORD

Document Number CR-17-62
 County of SAN JOAQUIN, California

City of RIPON

Brief Legal Description TRACT NO. 1748, OLIVE GROVE ESTATES UNIT NO. 1, RECORDED IN BOOK 27 OF MAPS & PLATS, PAGE 22, IN S.E. 1/4 OF SECTION 20, T. 2 S., R. 8 E., M.D.M.



T. 2 S., R. 8 E.

CORNER TYPE:

Government Corner Control
 Meander Property
 Rancho Other
 Date of Survey DECEMBER 8, 2016

COORDINATES (Optional)

N. _____
 E. _____
 Zone _____ NAD27 NAD83
 NAD83 Epoch _____
 Elev. _____
 Vert. Datum: NGVD29 NAVD88
 Meas. Units Metric Imperial

Corner- Left as found Found and tagged Established Reestablished Rebuilt

Identification and type of corner found: Evidence used to identify or procedure used to establish or reestablish the corner:

FOUND CENTERLINE MONUMENTS IN WELLS COURT, ASTER COURT AND SPRING CREEK DRIVE
PER OLIVE GROVE ESTATES UNIT NO. 1 RECORDED IN BOOK 27 OF MAPS & PLATS, PAGE 22, SAN
JOAQUIN COUNTY RECORDS. LOCATED MONUMENTS BY G.P.S. TIED TO CITY OF RIPON G.P.S.
SURVEY CONTROL NETWORK RECORDED IN BOOK 35 OF SURVEYS, PAGE 196, SAN JOAQUIN
COUNTY RECORDS. MONUMENTS SURVIVED ROAD RESURFACING.

A description of the physical condition of the monument as found and as set or reset:

SEE PAGE 2 FOR MONUMENT DESCRIPTIONS. FOUND MONUMENTS IN SAME CONDITION AS
SHOWN ON CORNER RECORD 16-454, AFTER ROAD RESURFACING.

SURVEYOR'S STATEMENT

This Corner Record was prepared by me or under my direction in conformance with the Land Surveyor's Act on December 30, 2016.

Signed [Signature] P.L.S. No. 7823

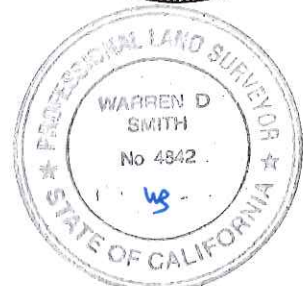


COUNTY SURVEYOR'S STATEMENT

This Corner Record was received January 5, 2017 and examined and filed January 30, 2017.

Signed [Signature] P.L.S. or R.C.E. No. 4842

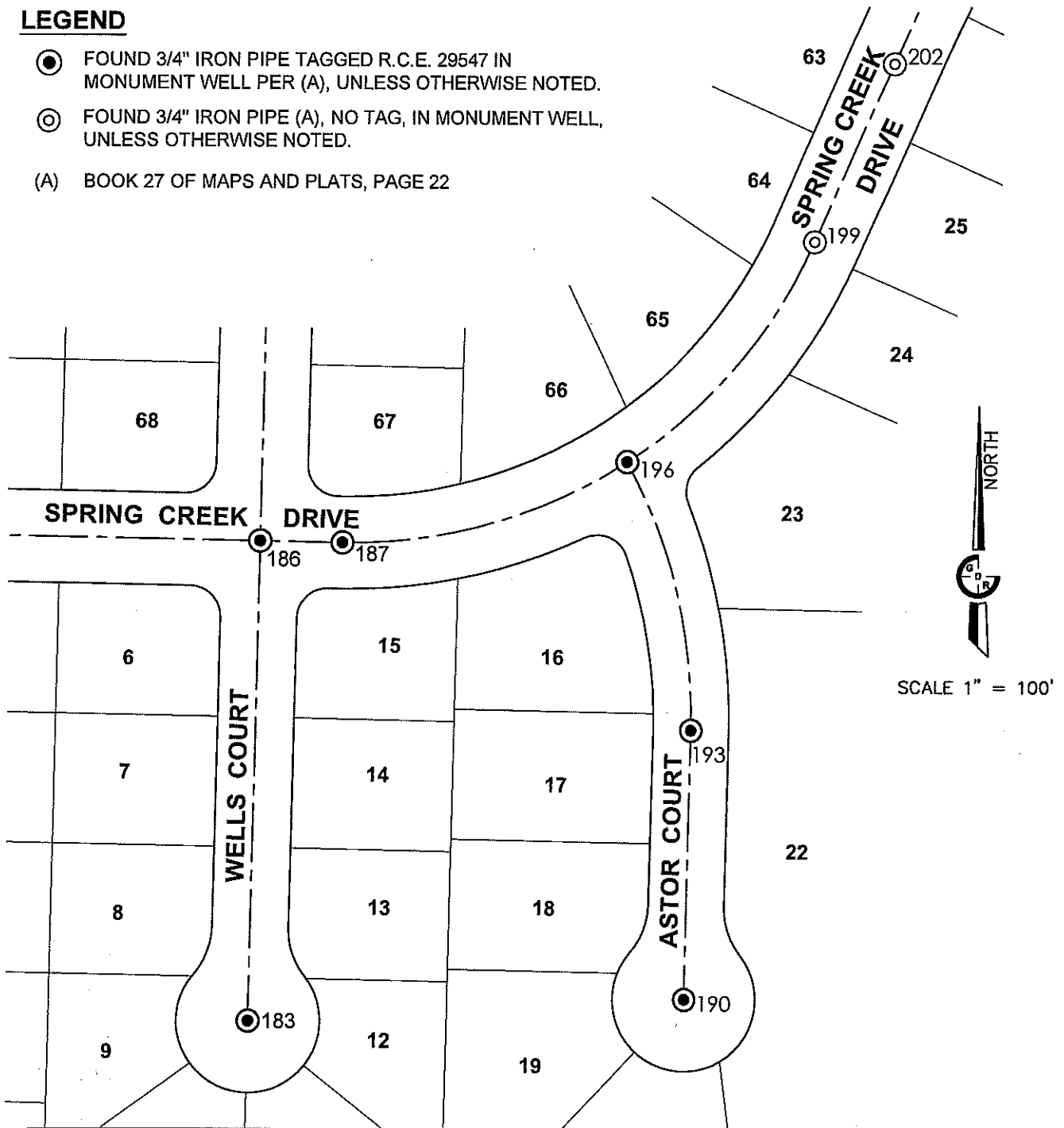
Title County Surveyor



County Surveyor's Comment: _____

LEGEND

- FOUND 3/4" IRON PIPE TAGGED R.C.E. 29547 IN MONUMENT WELL PER (A), UNLESS OTHERWISE NOTED.
- ⊙ FOUND 3/4" IRON PIPE (A), NO TAG, IN MONUMENT WELL, UNLESS OTHERWISE NOTED.
- (A) BOOK 27 OF MAPS AND PLATS, PAGE 22



GRID COORDINATES		
MON. NO.	NORTHING	EASTING
183	2092859.24	6384175.72
186	2093172.62	6384181.95
187	2093171.56	6384235.78
190	2092873.76	6384461.13
193	2093049.68	6384464.60
196	2093224.49	6384421.83
199	2093368.22	6384544.33
202	2093484.23	6384595.52

NOTE:
 LOCATED MONUMENTS BY G.P.S. TIED TO CITY OF RIPON G.P.S. SURVEY CONTROL NETWORK RECORDED IN BOOK 35 OF SURVEYS, PAGE 196, SAN JOAQUIN COUNTY RECORDS.