

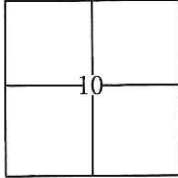
# CORNER RECORD

Document Number CR-17-59

City of Stockton

County of San Joaquin, California

Brief Legal Description Parcel Map, Book of Parcel Maps 11, Page 70.



Rancho Del Campo  
de Los Franceses

### CORNER TYPE

Government Corner  Control   
Meander  Property   
Rancho  Other

Date of Survey November 21, 2016

### COORDINATES(Optional)

N. \_\_\_\_\_  
E. \_\_\_\_\_  
Zone III NAD27  NAD83   
NAD83 Epoch 1991.35  
Elev. \_\_\_\_\_  
Vert. Datum: NGVD29  NAVD88   
Meas. Units: Metric  Imperial

Corner - Left as found  Found and tagged  Established  Reestablished  Rebuilt

Identification and type of corner found: Evidence used to identify or procedure used to establish or reestablish the corner:

Tied all found centerline monuments to the Record of Survey of City of Stockton Horizontal Control System Phase XIV, Book 35 of Surveys, Page 5. Used conventional survey methods to establish a position on monuments. Evidence identification and field procedure in more detail are shown on page 2.

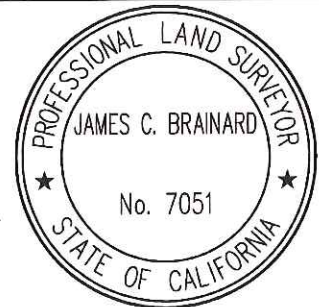
A description of the physical condition of the monument as found and as set or reset: \_\_\_\_\_

Found 3/4" iron pins in monument wells and a found 3/4" iron pin as shown on page 2.

### SURVEYOR'S STATEMENT

This Corner Record was prepared by me or under my direction in conformance with the Land Surveyor's Act on December 8, 2016.

Signed [Signature] P.L.S. or R.C.E. No.: 7051



### COUNTY SURVEYOR'S STATEMENT

This Corner Record was received January 18, 2017 and examined and filed January 30, 2017.

Signed Warren D. Smith P.L.S. or R.C.E. No.: 4842

Title County Surveyor

County Surveyor's Comment \_\_\_\_\_

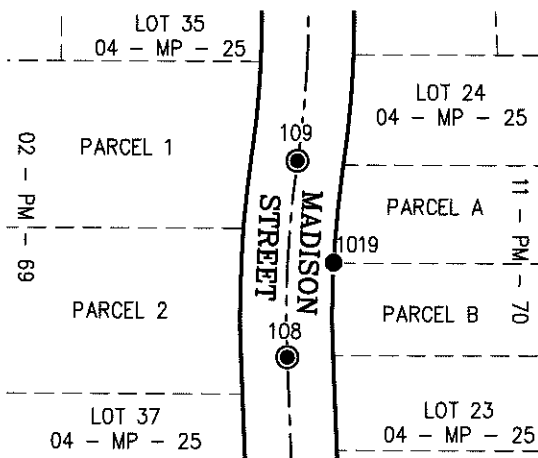
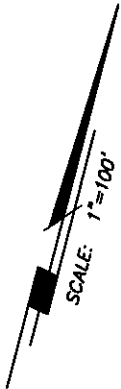


## STATEMENT OF PURPOSE:

THE PURPOSE OF THIS SURVEY IS TO IDENTIFY AND RECORD THE LOCATION OF EXISTING MONUMENTS PRIOR TO PG&E IMPROVEMENTS. NO CLAIM IS MADE AS TO THE RELATIONSHIP OF THE MONUMENTS SHOWN HEREON TO THE EXISTING PROPERTY LINES. ORIGINAL LOT LINES SHOWN ARE FOR GENERAL LOCATION AND INFORMATIONAL PURPOSES ONLY.

## DATUM STATEMENT:

COORDINATES SHOWN HEREON ARE GRID AND ARE BASED ON CITY OF STOCKTON MONUMENTS 273, 117 AND 340 CALIFORNIA COORDINATE SYSTEM (CCS83), ZONE III, 1983 NAD, (1991.35 EPOCH STOCKTON & SAN JOAQUIN COUNTY GPS ADJUSTMENT) AS SHOWN ON RECORD OF SURVEY BOOK 35 OF SURVEYS, PAGE 05.



GRID COORDINATES (U.S. SURVEY FEET)			
POINT	NORTHING	EASTING	REFERNCE
108	2160336.48'	6335131.64'	28 - RS - 91
109	2160440.86'	6335109.88'	28 - RS - 91
117	2157978.73'	6337037.23'	35 - RS - 05
273	2158599.30'	6333011.40'	35 - RS - 05
340	2163889.61'	6332136.19'	35 - RS - 05
1019	2160392.34'	6335142.94'	11 - PM - 70

## LEGEND:

- INDICATES FOUND 3/4" IRON PIN
- ⊙ INDICATES FOUND 3/4" IRON PIPES IN MONUMENT BOX.