

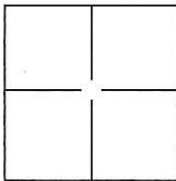
CORNER RECORD

Document Number CR-17-55

City of Stockton

County of San Joaquin, California

Brief Legal Description Pacific Manor, Volume 10 of Maps & Plats, Page 83 and Highland Park, Volume 11 of Maps & Plats, Page 50



CORNER TYPE

Government Corner Control
 Meander Property
 Rancho Other

Date of Survey January 14, 2016

COORDINATES(Optional)

N. _____
 E. _____
 Zone III NAD27 NAD83
 NAD83 Epoch 1991.35
 Elev. _____
 Vert. Datum: NGVD29 NADV88
 Meas. Units: Metric Imperial

Corner - Left as found Found and tagged Established Reestablished Rebuilt

Identification and type of corner found: Evidence used to identify or procedure used to establish or reestablish the corner:

Used G.P.S. on all cut crosses to tie to the City of Stockton Horizontal Control System Phase XIV. Evidence identification and field procedure in more detail are shown on page 2.

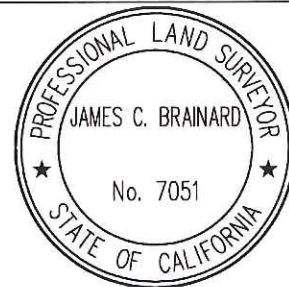
A description of the physical condition of the monument as found and as set or reset: _____

Found cut "X"s in concrete and City of Stockton monuments as shown on page 2.

SURVEYOR'S STATEMENT

This Corner Record was prepared by me or under my direction in conformance with the Land Surveyor's Act on February 22, 2016.

Signed [Signature] P.L.S. or R.C.E. No.: 7051



COUNTY SURVEYOR'S STATEMENT

This Corner Record was received January 18, 2017 and examined and filed January 20, 2017.

Signed [Signature] P.L.S. or R.C.E. No.: 4842

Title County Surveyor

County Surveyor's Comment _____

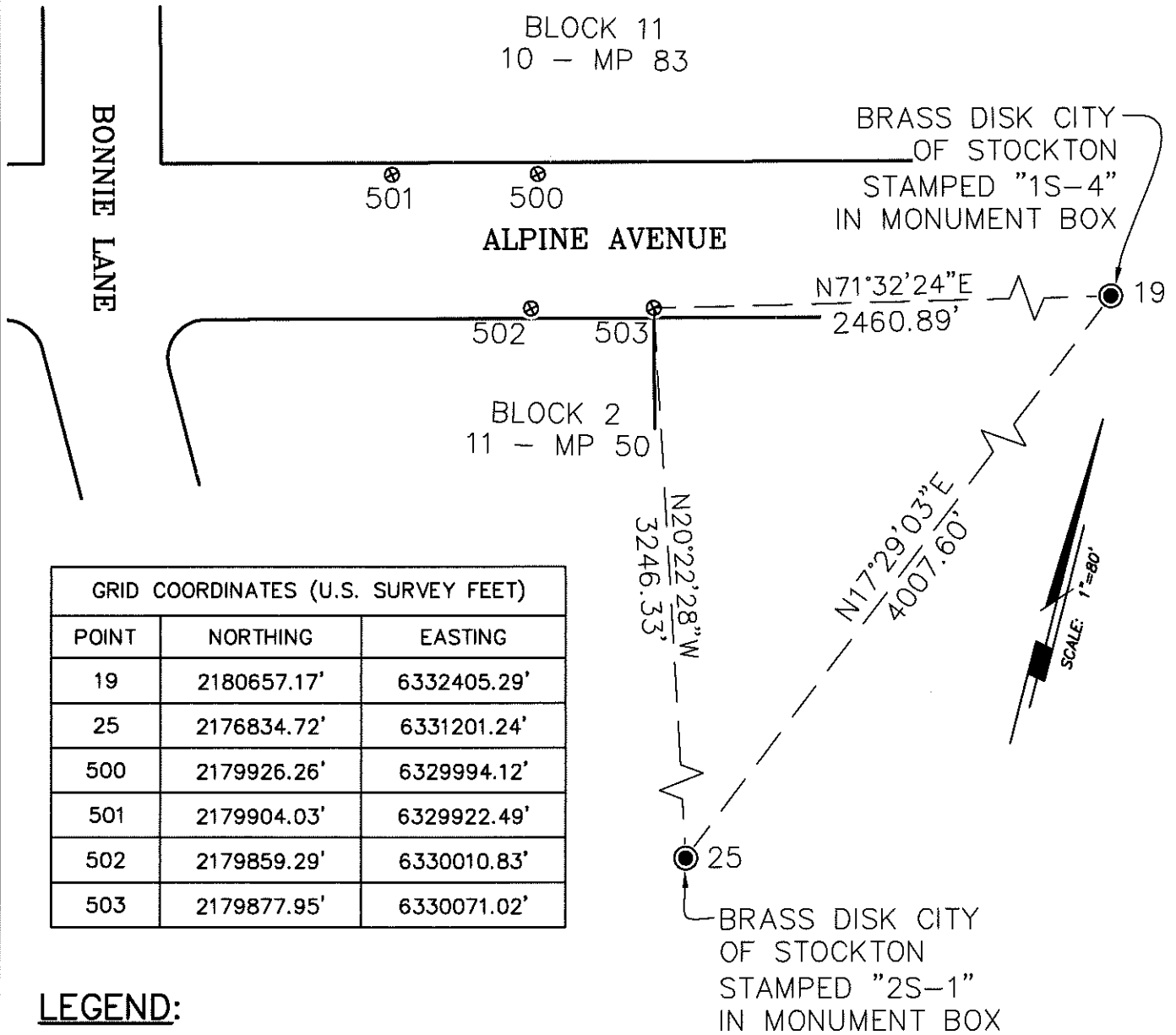


STATEMENT OF PURPOSE:

THE PURPOSE OF THIS SURVEY IS TO IDENTIFY AND RECORD THE LOCATION OF EXISTING MONUMENTS PRIOR TO PG&E IMPROVEMENTS. NO CLAIM IS MADE AS TO THE RELATIONSHIP OF THE MONUMENTS SHOWN HEREON TO THE EXISTING PROPERTY LINES. ORIGINAL LOT LINES SHOWN ARE FOR GENERAL LOCATION AND INFORMATIONAL PURPOSES ONLY.

DATUM STATEMENT:

COORDINATES SHOWN HEREON ARE GRID AND ARE BASED ON CITY OF STOCKTON MONUMENTS 19 AND 25, CALIFORNIA COORDINATE SYSTEM (CCS83), ZONE III, 1983 NAD, (1991.35 EPOCH STOCKTON & SAN JOAQUIN COUNTY GPS ADJUSTMENT) AS SHOWN ON RECORD OF SURVEY BOOK 35 OF SURVEYS, PAGE 05. DISTANCES SHOWN ARE GRID. THE PROJECT SPECIFIC SCALE FACTOR IS 0.99993826.



GRID COORDINATES (U.S. SURVEY FEET)		
POINT	NORTHING	EASTING
19	2180657.17'	6332405.29'
25	2176834.72'	6331201.24'
500	2179926.26'	6329994.12'
501	2179904.03'	6329922.49'
502	2179859.29'	6330010.83'
503	2179877.95'	6330071.02'

LEGEND:

- ⊗ INDICATES FOUND CUT CROSS, NO TAG.
- INDICATES FOUND MONUMENT AS NOTED