

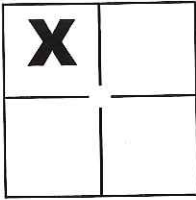
CORNER RECORD

Document Number CR-17-53

City of _____

County of San Joaquin, California

Brief Legal Description The 7.82 Ac. Parcel shown on R.S. 18-158, S.J.C.R.



Sec. 3, T. 2S., R. 7E.,
M.D.B.&M.

CORNER TYPE

Government Corner Control
 Meander Property
 Rancho Other

Date of Survey September 17, 2016

COORDINATES(Optional)

N. _____
 E. _____
 Zone _____ NAD27 NAD83
 NAD83 Epoch _____
 Elev. _____
 Vert. Datum: NGVD29 NADV88
 Meas. Units: Metric Imperial

Corner - Left as found Found and tagged Established Reestablished Rebuilt

Identification and type of corner found: Evidence used to identify or procedure used to establish or reestablish the corner:

See Sheet 2

A description of the physical condition of the monument as found and as set or reset:

See Sheet 2

SURVEYOR'S STATEMENT

This Corner Record was prepared by me or under my direction in conformance with the Land Surveyor's Act on Oct. 7, 2016.

Signed Michael L. Quartaroli P.L.S. or R.C.E. No.: L.S. 4450



COUNTY SURVEYOR'S STATEMENT

This Corner Record was received December 9, 2016 and examined

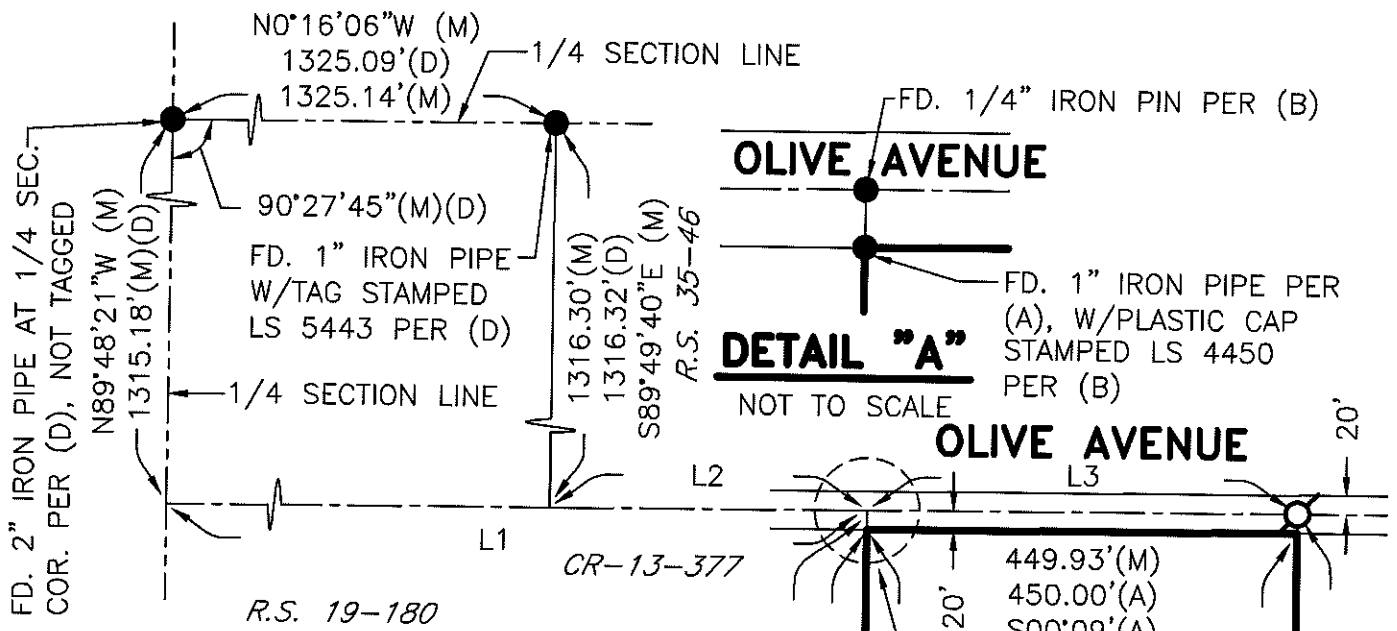
and filed January 10, 2017.

Signed Warren D. Smith P.L.S. or R.C.E. No.: 4842

Title County Surveyor

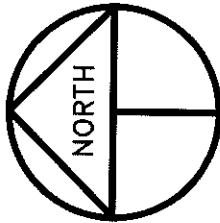
County Surveyor's Comment _____





REFERENCE

- (A) R.S. 18-158, S.J.C.R.
- (B) CR-15-03, S.J.C.S.R.
- (C) CR-13-377, S.J.C.S.R.
- (D) R.S. 35-46, S.J.C.R.
- (E) R.S. 19-180, S.J.C.R.



SCALE: 1" = 200'
2016-191

LEGEND

- INDICATES FOUND MONUMENT AS NOTED
- INDICATES SET 3/4" X 30" IRON PIPE W/TAG STAMPED LS 4450
- INDICATES SET SPIKE AND WASHER STAMPED LS 4450
- R.S. INDICATES RECORD OF SURVEY, BOOK AND PAGE, S.J.C.R.
- C.R. INDICATES CORNER RECORD, S.J.C.S.R.
- S.J.C.S.R. INDICATES SAN JOAQUIN COUNTY SURVEYORS RECORDS
- S.J.C.R. INDICATES SAN JOAQUIN COUNTY RECORDS

LINE TABLE

LINE	BEARING	DISTANCE
L1	S0°13'11"E (M)	1656.78'(M) 1656.73'(D)
L2	S0°13'11"E (M)	331.14'(M) 331±(C)
		331.32'(D)
L3	S0°13'11"E (M)	449.93'(M)

OLIVE AVENUE

DETAIL "A"
NOT TO SCALE

OLIVE AVENUE

