

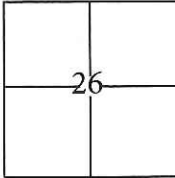
CORNER RECORD

Document Number CR-17-51

City of Lathrop

County of San Joaquin, California

Brief Legal Description Lathrop Village Homes, Unit No. 5, Book of Maps & Plats Vol. 20, Page 54 and Parcel Map, Book 9 of Parcel Maps, Page 238.



CORNER TYPE

Government Corner Control
 Meander Property
 Rancho Other

COORDINATES(Optional)

N. _____
 E. _____
 Zone III NAD27 NAD83
 NAD83 Epoch 1991.35
 Elev. _____
 Vert. Datum: NGVD29 NADV88
 Meas. Units: Metric Imperial

T. 1 S., R. 6 E. M.D.B. & M.

Date of Survey October 4, 2016

Corner - Left as found Found and tagged Established Reestablished Rebuilt

Identification and type of corner found: Evidence used to identify or procedure used to establish or reestablish the corner:

Used conventional survey methods and CR 16-201 to reestablish the position of obliterated cut cross, as shown on page 2.

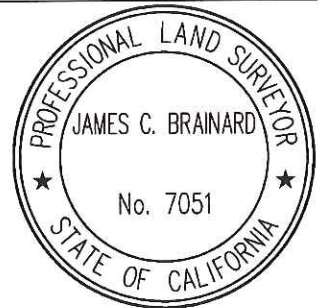
A description of the physical condition of the monument as found and as set or reset:

Found 3/4" iron pins, no tag, in monument wells and set cut cross with brass tags stamped L.S. 7051 in concrete as shown on page 2.

SURVEYOR'S STATEMENT

This Corner Record was prepared by me or under my direction in conformance with the Land Surveyor's Act on October 5, 2016.

Signed [Signature] P.L.S. or R.C.E. 7051
 No.:



COUNTY SURVEYOR'S STATEMENT

This Corner Record was received December 6, 2016 and examined and filed January 10, 2017.

Signed Warren D. Smith P.L.S. or R.C.E. No.: 4842

Title County Surveyor

County Surveyor's Comment _____



STATEMENT OF PURPOSE:

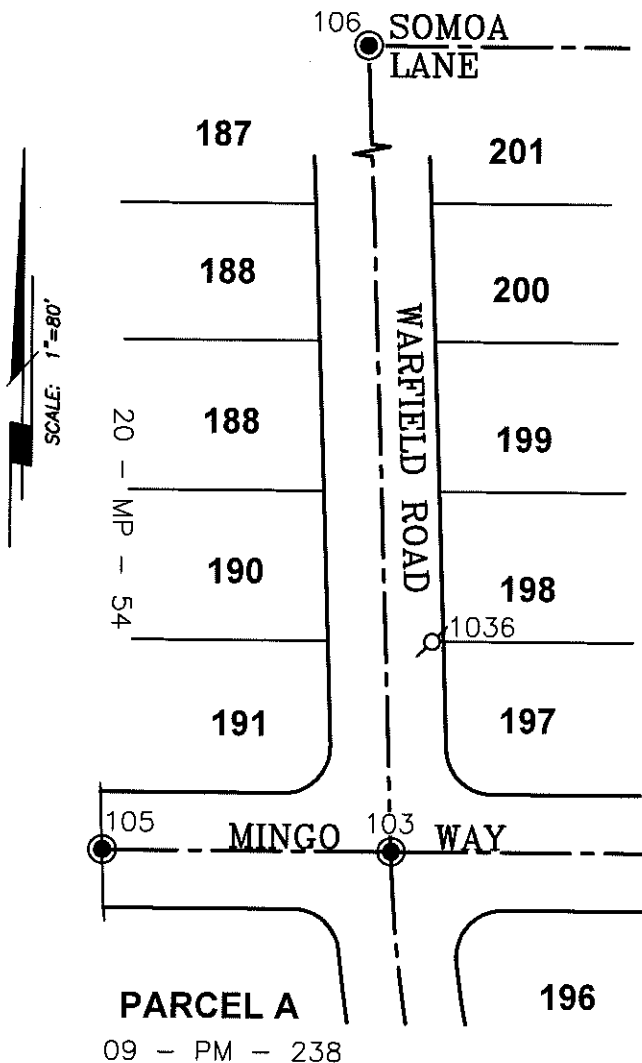
THE PURPOSE OF THIS SURVEY IS TO RECORD AND REESTABLISH THE LOCATION OF MONUMENTS ORIGINALLY SHOWN ON CR 16-201 DISTURBED AFTER THE CONSTRUCTION OF UNDERGROUND IMPROVEMENTS. THE PURPOSE OF THIS SURVEY IS NOT TO MAKE PROPERTY LINE DETERMINATIONS. LOT LINES SHOWN HEREON ARE FOR GENERAL LOCATION AND INFORMATIONAL PURPOSES ONLY.

LEGEND:

- ⊗ INDICATES SET CUT CROSS WITH BRASS TAG STAMPED L.S. 7051.
- INDICATES FOUND 3/4" IRON PIN, NO TAG, IN MONUMENT WELL, UNLESS OTHERWISE NOTED

DATUM STATEMENT:

COORDINATES SHOWN HEREON ARE GRID AND ARE BASED ON THE PRIMARY SURVEY CONTROL NETWORK FOR RECLAMATION 17 POINT ID NO. 6, 7 AND 604, CALIFORNIA COORDINATE SYSTEM (CCS83), ZONE III, 1983 NAD, (1991.35 GPS ADJUSTMENT) AS SHOWN ON RECORD OF SURVEY BOOK 38 OF SURVEYS, PAGE 119. DISTANCES SHOWN ARE GRID. THE PROJECT SPECIFIC SCALE FACTOR IS 0.99992976.



GRID COORDINATES (U.S. SURVEY FEET)		
POINT	NORTHING	EASTING
103	2119477.79'	6334309.91'
105	2119478.22'	6334184.79'
106	2120211.42'	6334285.17'
1036	2119568.55'	6334326.84'