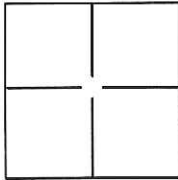


# CORNER RECORD

Document Number CR-17-18  
 City of Stockton County of San Joaquin, California

Brief Legal Description Projection of West lot line of Lot 1874, 21 M.P. 36 at the North end thereof.



**CORNER TYPE**

Government Corner  Control   
 Meander  Property   
 Rancho  Other

Date of Survey November 22, 2016

**COORDINATES(Optional)**

N. \_\_\_\_\_  
 E. \_\_\_\_\_  
 Zone \_\_\_\_\_ NAD27  NAD83   
 NAD83 Epoch \_\_\_\_\_  
 Elev. \_\_\_\_\_  
 Vert. Datum: NGVD29  NADV88   
 Meas. Units: Metric  Imperial

Corner - Left as found  Found and tagged  Established  Reestablished  Rebuilt

Identification and type of corner found: Evidence used to identify or procedure used to establish or reestablish the corner:

The West lot line of Lot 1874 was established based on found centerline monuments and record data per 21 M.P. 36.

A description of the physical condition of the monument as found and as set or reset: Set 1" brass disc stamped "LS 6947" in concrete sidewalk at six foot projection of lot line.

**SURVEYOR'S STATEMENT**

This Corner Record was prepared by me or under my direction in conformance with the Land Surveyor's Act on December 2, 2016.

Signed [Signature] P.L.S. or R.C.E. No.: L.S. 6947



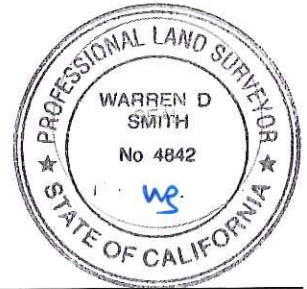
**COUNTY SURVEYOR'S STATEMENT**

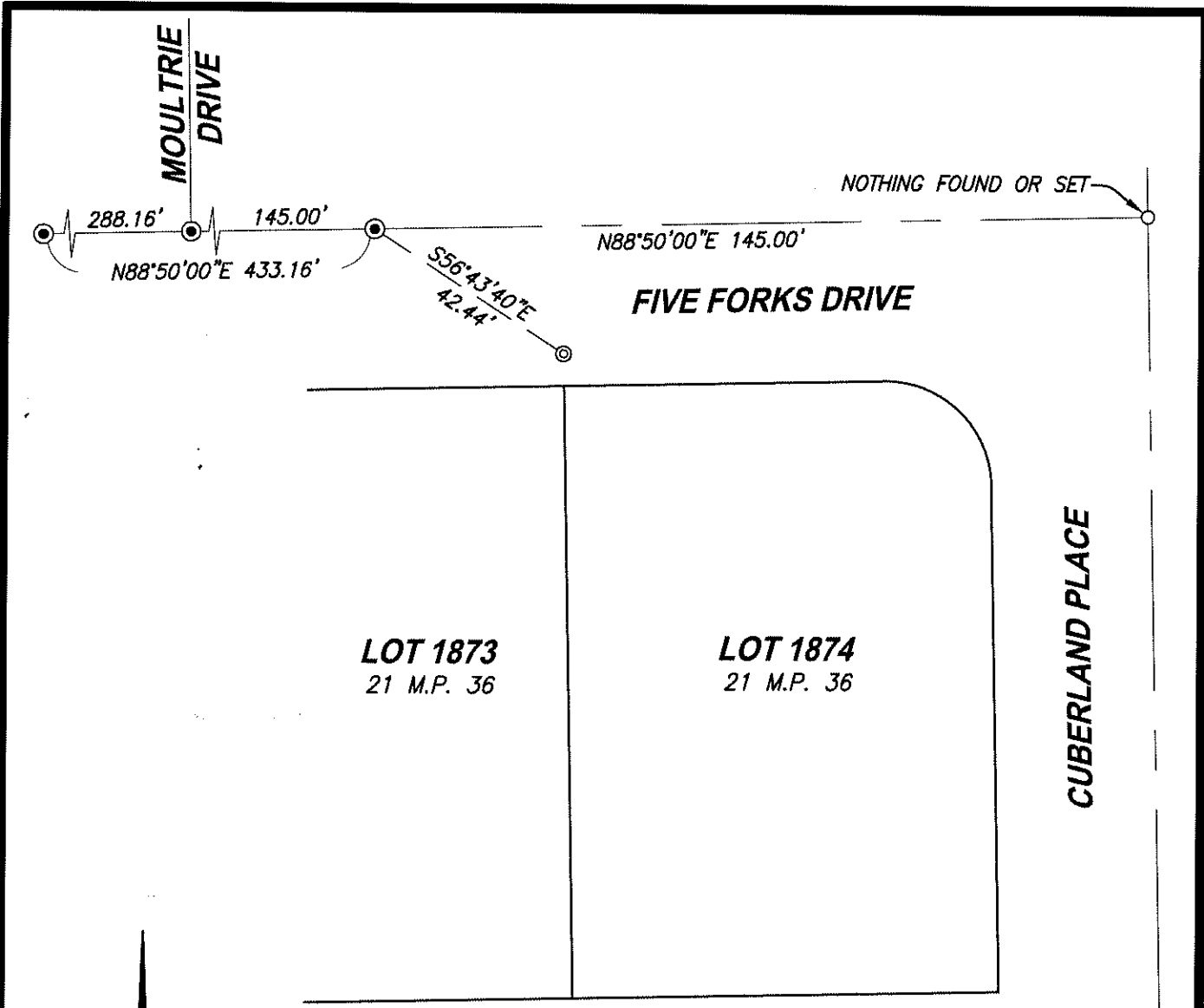
This Corner Record was received December 8, 2016 and examined and filed January 10, 2017.

Signed [Signature] P.L.S. or R.C.E. No.: 4842

Title County Surveyor

County Surveyor's Comment \_\_\_\_\_





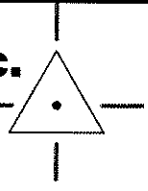
SCALE 1" = 30'

**LEGEND:**

- ⊙ - - SET 1" BRASS DISC "LS 6947" IN SIDEWALK AT 6.00' PROJECTION OF LOT LINE BASED ON FOUND CENTERLINE MONUMENTS AND RECORD DATA.
- ⊙ - - FOUND 3/4" IRON PIN IN MONUMENT WELL PER 21 M.P. 36
- M.P. - - MAPS & PLATS

**CenterPoint Engineering, Inc.**

Civil Engineering & Land Surveying  
1217 Pleasant Grove Blvd. Suite 130 · Roseville, CA · 95678  
Phone: 916-773-4006 Fax: 916-773-4498



DRAWN BY: BB

CHECKED BY: MH

SHEET: 2 OF 2

SCALE: 1" = 30'

DATE: 12-02-2016