

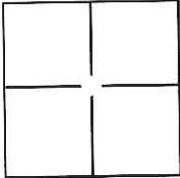
# CORNER RECORD

Document Number CR-17-14

City of Stockton

County of San Joaquin, California

Brief Legal Description Projection of South lot line of Lot 36, 20 M.P. 28 at the West end thereof.



### CORNER TYPE

Government Corner  Control   
Meander  Property   
Rancho  Other

Date of Survey November 22, 2016

### COORDINATES(Optional)

N. \_\_\_\_\_  
E. \_\_\_\_\_  
Zone \_\_\_\_\_ NAD27  NAD83   
NAD83 Epoch \_\_\_\_\_  
Elev. \_\_\_\_\_  
Vert. Datum: NGVD29  NADV88   
Meas. Units: Metric  Imperial

Corner - Left as found  Found and tagged  Established  Reestablished  Rebuilt

Identification and type of corner found: Evidence used to identify or procedure used to establish or reestablish the corner:

The South lot line of Lot 36 was established based on found centerline monuments and record data per 20 M.P. 28.

A description of the physical condition of the monument as found and as set or reset: Set 1" brass disc stamped "LS 6947" in concrete sidewalk at five foot projection of lot line.

### SURVEYOR'S STATEMENT

This Corner Record was prepared by me or under my direction in conformance with the Land Surveyor's Act on December 2, 2016.

Signed [Signature] P.L.S. or R.C.E. No.: L.S. 6947



### COUNTY SURVEYOR'S STATEMENT

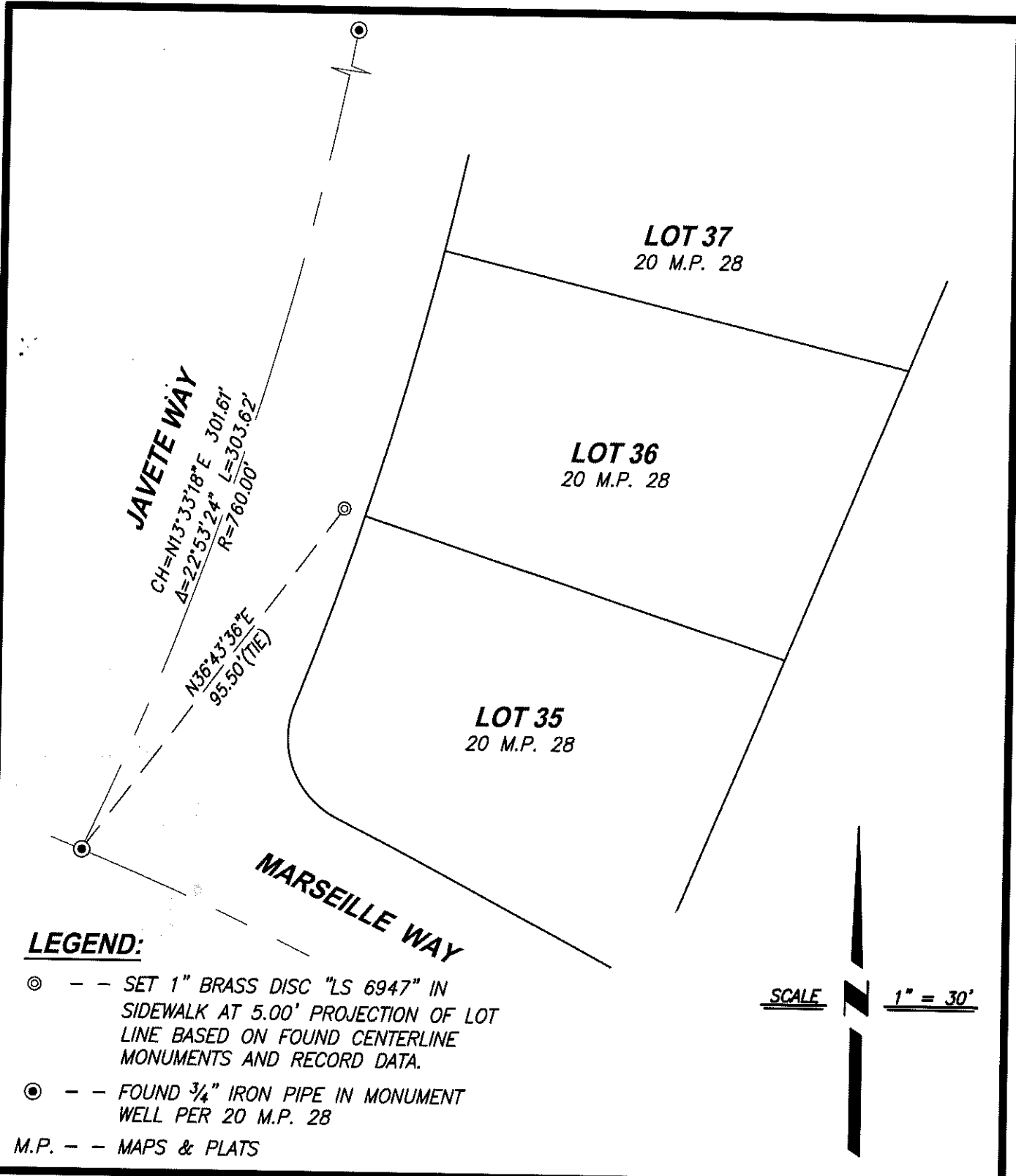
This Corner Record was received December 8, 2016 and examined and filed January 10, 2017.

Signed [Signature] P.L.S. or R.C.E. No.: 4842

Title County Surveyor

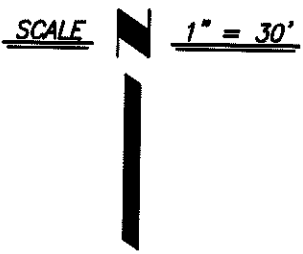
County Surveyor's Comment \_\_\_\_\_





**LEGEND:**

- ⊙ --- SET 1" BRASS DISC "LS 6947" IN SIDEWALK AT 5.00' PROJECTION OF LOT LINE BASED ON FOUND CENTERLINE MONUMENTS AND RECORD DATA.
- ⊙ --- FOUND 3/4" IRON PIPE IN MONUMENT WELL PER 20 M.P. 28
- M.P. --- MAPS & PLATS



**CenterPoint Engineering, Inc.**

Civil Engineering & Land Surveying  
 1217 Pleasant Grove Blvd. Suite 130 • Roseville, CA • 95678  
 Phone: 916-773-4006 Fax: 916-773-4498



DRAWN BY: BB
CHECKED BY: MH
SHEET: 2 OF 2
SCALE: 1" = 30'
DATE: 12-02-2016