

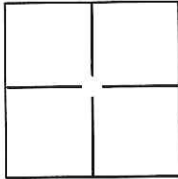
CORNER RECORD

Document Number CR-17-09

City of Stockton

County of San Joaquin, California

Brief Legal Description Projection of SE lot line of Lot 94, 21 M.P. 24 at the NE end thereof.



CORNER TYPE

Government Corner Control
Meander Property
Rancho Other

Date of Survey November 22, 2016

COORDINATES(Optional)

N. _____
E. _____
Zone _____ NAD27 NAD83
NAD83 Epoch _____
Elev. _____
Vert. Datum: NGVD29 NADV88
Meas. Units: Metric Imperial

Corner - Left as found Found and tagged Established Reestablished Rebuilt

Identification and type of corner found: Evidence used to identify or procedure used to establish or reestablish the corner:

The Southeast lot line of Lot 94 was established based on found centerline monuments and record data per 21 M.P. 24.

A description of the physical condition of the monument as found and as set or reset: Set 1" brass disc stamped "LS 6947" in concrete sidewalk at five foot projection of lot line.

SURVEYOR'S STATEMENT

This Corner Record was prepared by me or under my direction in conformance with the Land Surveyor's Act on December 2, 2016.

Signed [Signature] P.L.S. or R.C.E. No.: L.S. 6947



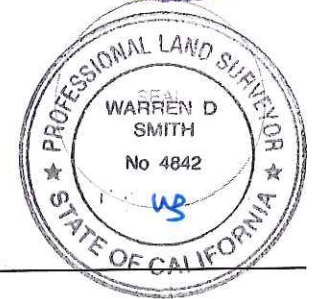
COUNTY SURVEYOR'S STATEMENT

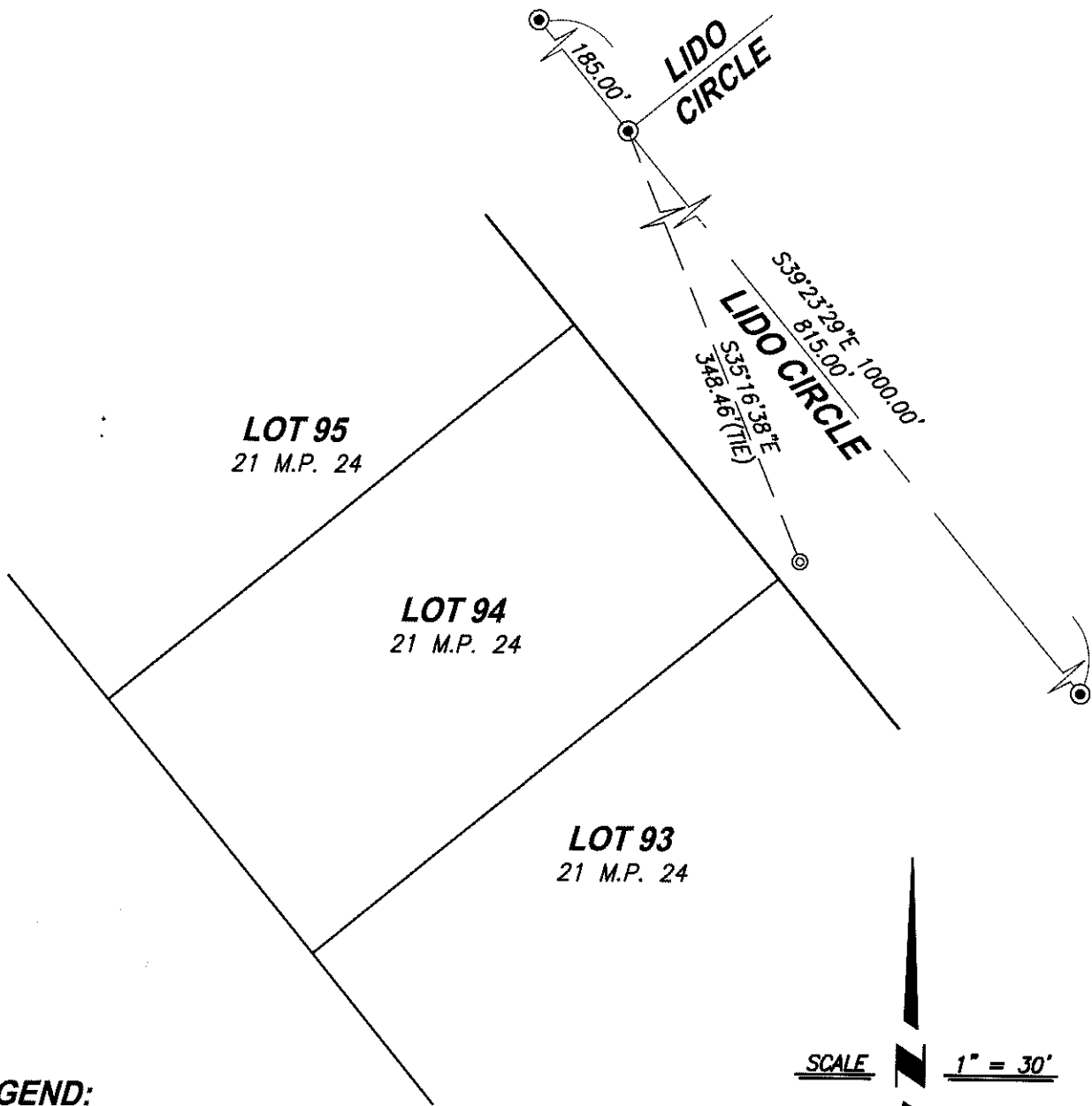
This Corner Record was received December 8, 2016 and examined and filed January 10, 2017.

Signed [Signature] P.L.S. or R.C.E. No.: 4842

Title County Surveyor

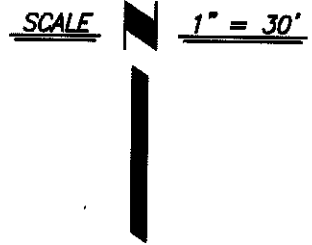
County Surveyor's Comment _____





LEGEND:

- ⊙ -- SET 1" BRASS DISC "LS 6947" IN
SIDEWALK AT 5.00' PROJECTION OF LOT
LINE BASED ON FOUND CENTERLINE
MONUMENTS AND RECORD DATA.
- ⊙ -- FOUND 3/4" IRON PIN IN MONUMENT WELL
PER 21 M.P. 24
- M.P. -- MAPS & PLATS



CenterPoint Engineering, Inc.

Civil Engineering & Land Surveying

1217 Pleasant Grove Blvd. Suite 130 • Roseville, CA • 95678
Phone: 916-773-4006 Fax: 916-773-4498



DRAWN BY: BB

CHECKED BY: MH

SHEET: 2 OF 2

SCALE: 1" = 30'

DATE: 12-02-2016