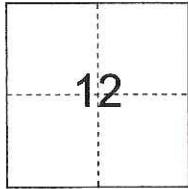


CORNER RECORD

City of Lodi

Document Number CR-17-02
County of San Joaquin, California

Brief Legal Description Cherokee Lane and Harold Street,
within Northeast Quarter of Section 12, T3N, R6E



CORNER TYPE

Government Corner Control
Meander Property
Rancho Other

Date of Survey Nov. 1, 2016

COORDINATES (Optional)

N. _____
E. _____
Zone _____ NAD27 NAD83
NAD83 Epoch _____
Elev. _____
Vert. Datum: NGVD29 NAVD88
Meas. Units: Metric Imperial

Corner - Left as found Found and tagged Established Reestablished Rebuilt

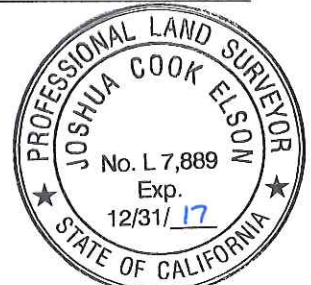
Identification and type of corner found: Evidence used to identify or procedure used to establish or reestablish the corner:
See sketch on backside.

A description of the physical condition of the monument as found and as set or reset:
See sketch on backside.

SURVEYOR'S STATEMENT

This Corner Record was prepared by me or under my direction in conformance with
the Land Surveyors' Act on Nov. 16, 2016

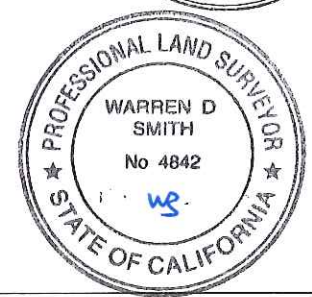
Signed [Signature] L.S. or R.C.E. Number 7889



COUNTY SURVEYOR'S STATEMENT

This Corner Record was received December 1, 2016, and examined
and filed January 10, 2017

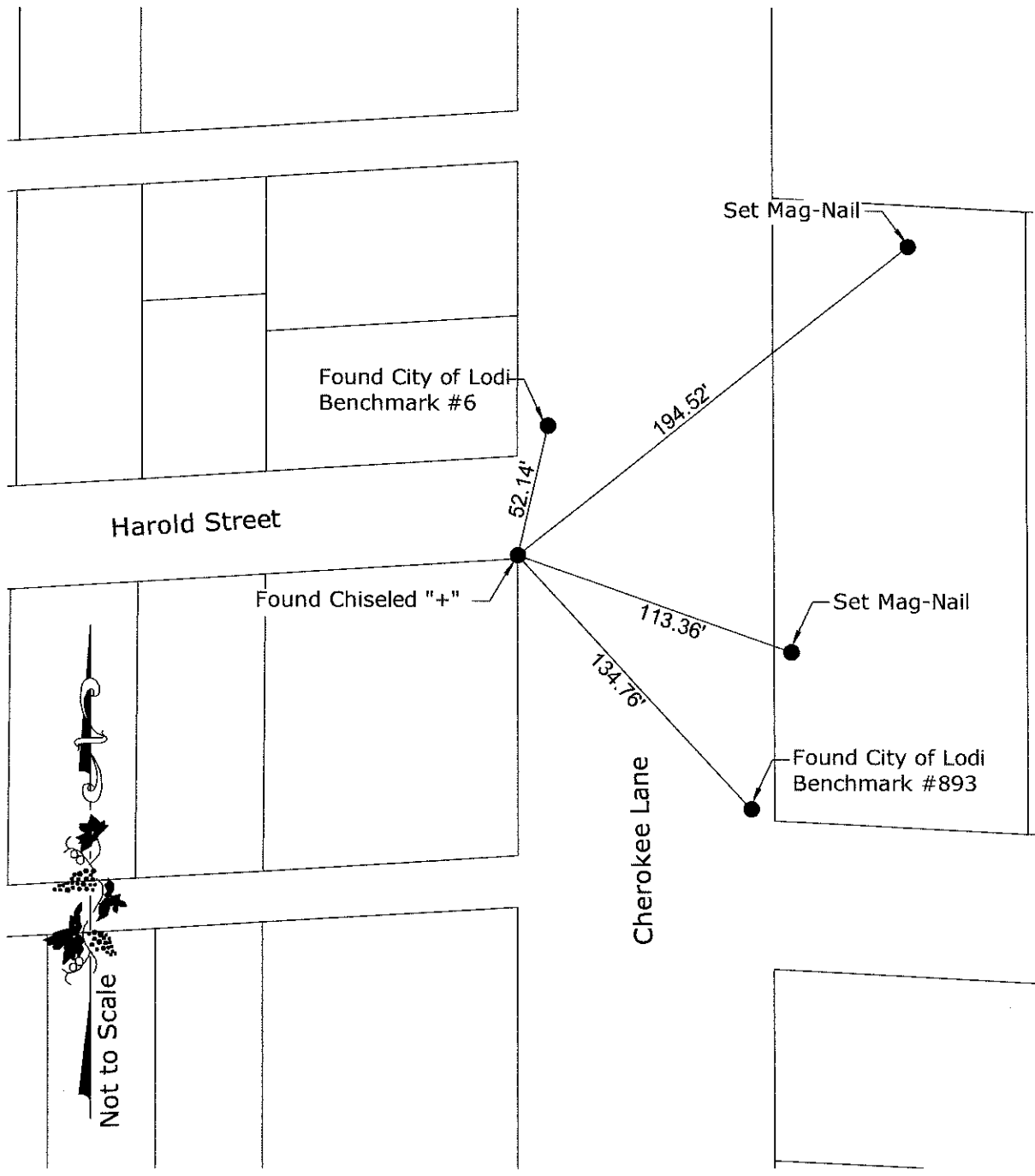
Signed Warren D. Smith P.L.S. No. 4842
Title County Surveyor



County Surveyor's Comment _____

(D.D. Sheet No. 16)

S:\Projects\2016\10064\10064.dwg 06/16/16 9:27am-10:50m-2007E: 10000_00.dwg 001_Central Network and BP Level.dwg 001_Shape File.dwg 001_BP.dwg



Not to Scale

Notes:

- 1. Monuments are not tagged unless noted.
- 2. No attempt was made to verify the monument(s)



PREPARED IN THE OFFICE OF:

BAUMBACH & PIAZZA, INC.

CIVIL ENGINEERS • SURVEYORS

www.bpengineers.net

209.368.6618

323 W. Elm St.

Lodi, CA 95240