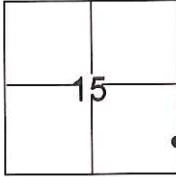


CORNER RECORD

Document Number CR-16-464
 County of San Joaquin, California

City of _____
 Brief Legal Description A.P.N. 105-170-11



T.2N., R.8E., M.D.B.&M.

CORNER TYPE

Government Corner Control
 Meander Property
 Rancho Other

Date of Survey October 6, 2016

COORDINATES(Optional)

N. _____
 E. _____
 Zone _____ NAD27 NAD83
 NAD83 Epoch _____
 Elev. _____
 Vert. Datum: NGVD29 NADV88
 Meas. Units: Metric Imperial

Corner - Left as found Found and tagged Established Reestablished Rebuilt

Identification and type of corner found: Evidence used to identify or procedure used to establish or reestablish the corner:
See sketch.

A description of the physical condition of the monument as found and as set or reset: See sketch.

SURVEYOR'S STATEMENT

This Corner Record was prepared by me or under my direction in conformance with the Land Surveyor's Act on November 16, 2016.

Signed Joe Murphy P.L.S. or R.C.E. No.: 7269



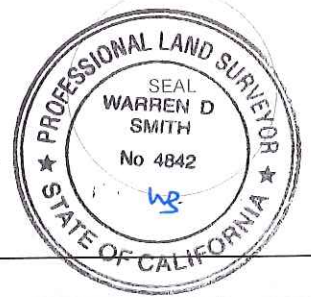
COUNTY SURVEYOR'S STATEMENT

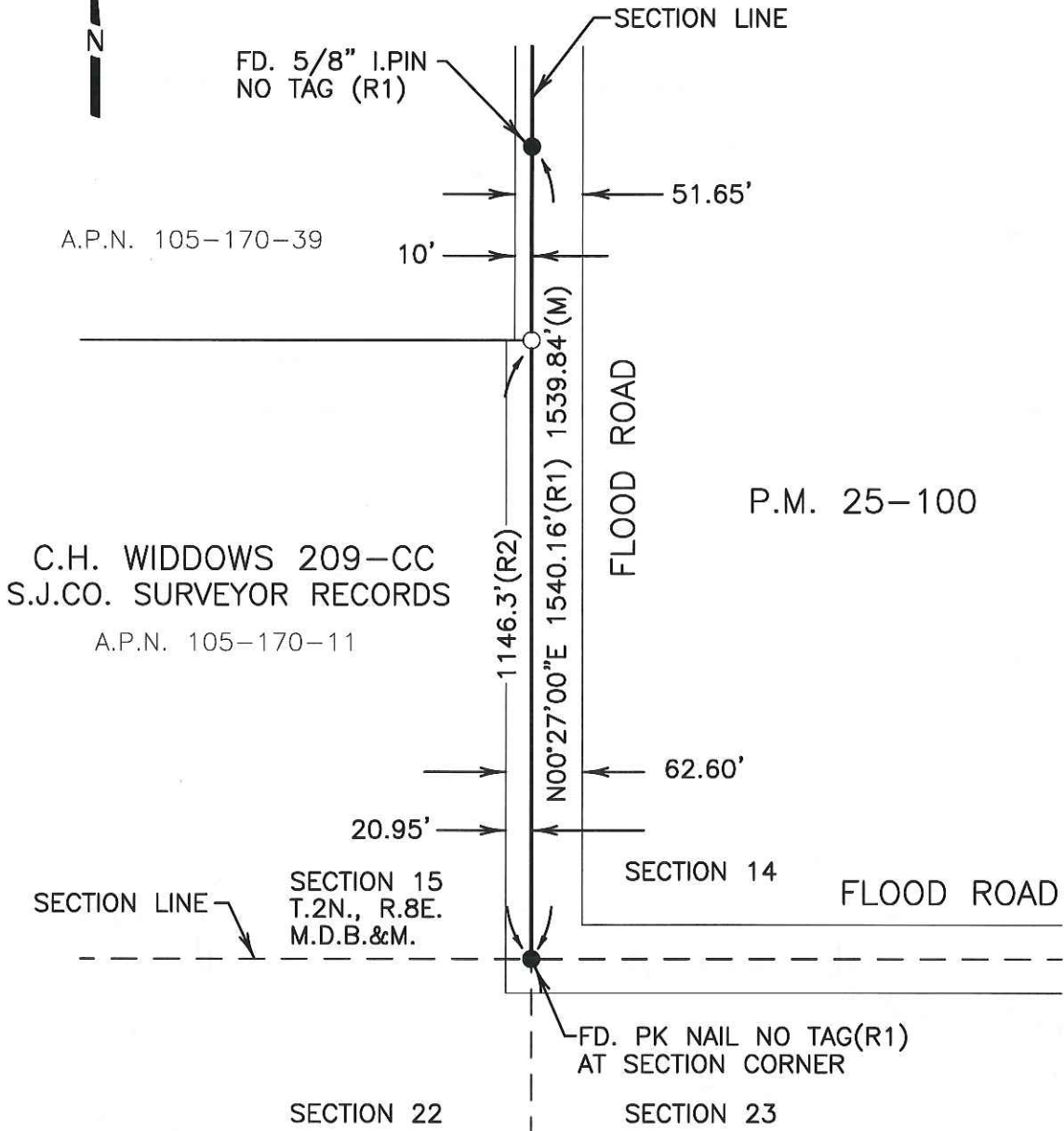
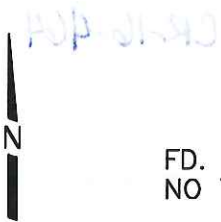
This Corner Record was received November 21, 2016 and examined and filed December 9, 2016.

Signed Warren D. Smith P.L.S. or R.C.E. No.: 4842

Title County Surveyor

County Surveyor's Comment _____





C.H. WIDDOWS 209-CC
S.J.CO. SURVEYOR RECORDS
A.P.N. 105-170-11

LEGEND

- FD. FOUND
- I.PIPE IRON PIPE
- I.PIN IRON PIN
- (M) MEASURED
- FOUND MONUMENT AS NOTED
- SET 3/4" IRON ROD,
WITH CAP STAMPED "L.S. 7269"

REFERENCES

- (R1) P.M. 25-100
- (R2) C.H. WIDDOWS 209-CC,
S.J.CO. SURVEYOR RECORDS

DILLON & MURPHY
CONSULTING CIVIL ENGINEERS
ENGINEERING • PLANNING • SURVEYING
847 N. CLUFF AVENUE, SUITE A2, LODI, CALIFORNIA 95240 (209) 334-0613
1691