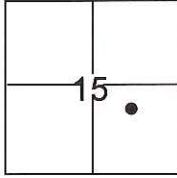


# CORNER RECORD

Document Number CR-16-463  
County of San Joaquin, California

City of \_\_\_\_\_  
Brief Legal Description A.P.N. 105-170-17



T.2N., R.8E., M.D.B.&M.

### CORNER TYPE

Government Corner  Control   
Meander  Property   
Rancho  Other

Date of Survey October 6, 2016

### COORDINATES(Optional)

N. \_\_\_\_\_  
E. \_\_\_\_\_  
Zone \_\_\_\_\_ NAD27  NAD83   
NAD83 Epoch \_\_\_\_\_  
Elev. \_\_\_\_\_  
Vert. Datum: NGVD29  NADV88   
Meas. Units: Metric  Imperial

Corner - Left as found  Found and tagged  Established  Reestablished  Rebuilt

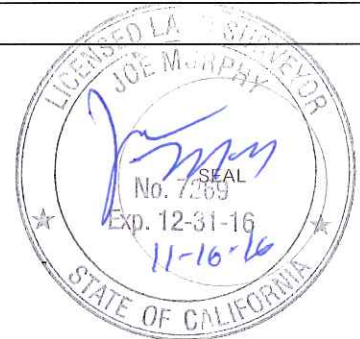
Identification and type of corner found: Evidence used to identify or procedure used to establish or reestablish the corner:  
See sketch.

A description of the physical condition of the monument as found and as set or reset: See sketch.

### SURVEYOR'S STATEMENT

This Corner Record was prepared by me or under my direction in conformance with  
the Land Surveyor's Act on November 16, 2016.

Signed Joe Murphy P.L.S. or R.C.E. No.: 7269



### COUNTY SURVEYOR'S STATEMENT

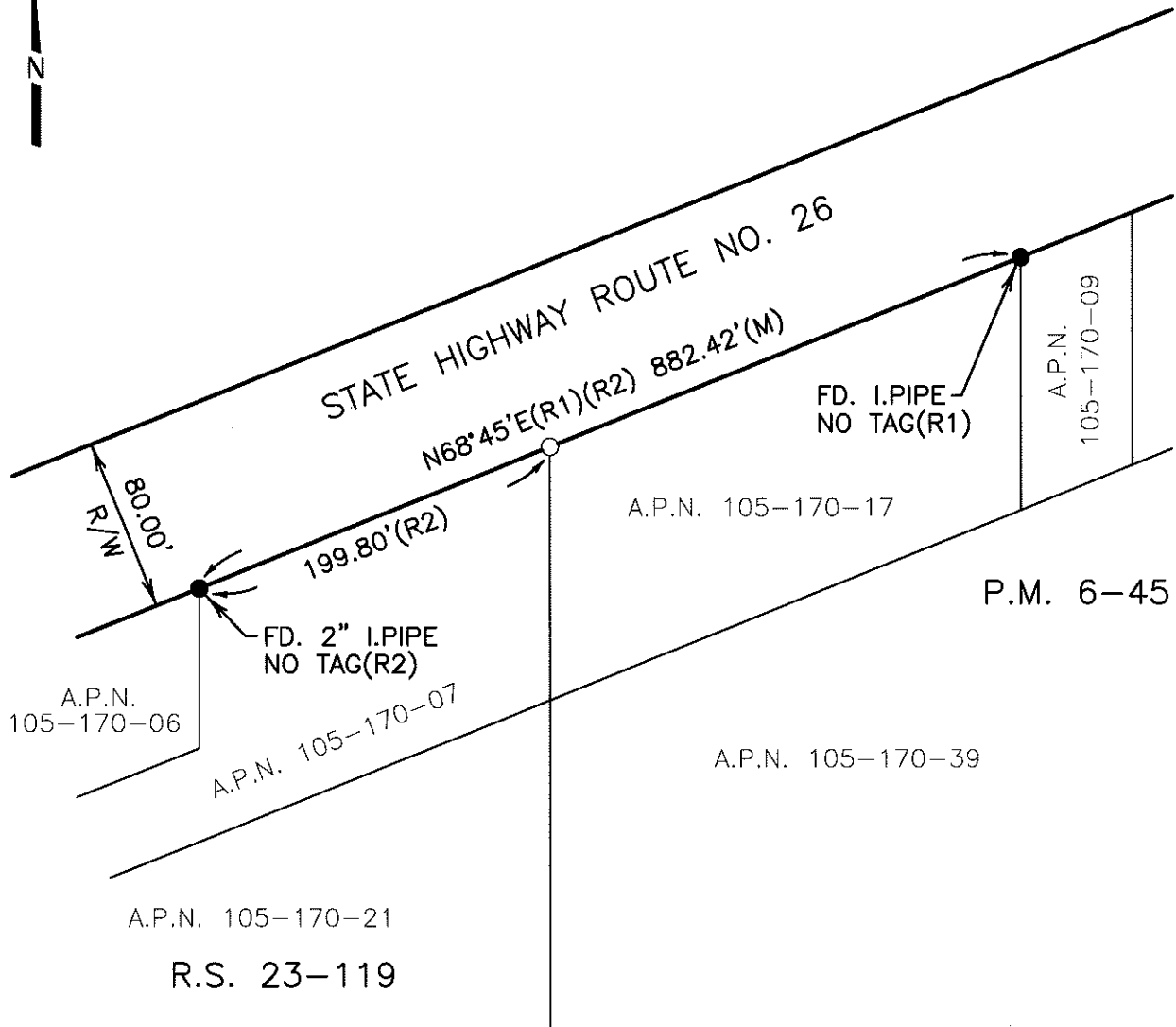
This Corner Record was received November 21, 2016 and examined  
and filed December 9, 2016.

Signed Warren D. Smith P.L.S. or R.C.E. No.: 4842

Title County Surveyor

County Surveyor's Comment \_\_\_\_\_





**LEGEND**

- FD. I.P.I.PE (M) FOUND IRON PIPE MEASURED
- FOUND MONUMENT AS NOTED
- SET 3/4" IRON ROD, WITH CAP STAMPED "L.S. 7269"

**REFERENCES**

- (R1) P.M. 6-45
- (R2) R.S. 23-119

**DILLON & MURPHY**  
CONSULTING CIVIL ENGINEERS  
ENGINEERING • PLANNING • SURVEYING  
847 N. CLIFF AVENUE, SUITE A2, Lodi, CALIFORNIA 95240 (209) 334-8613  
1691