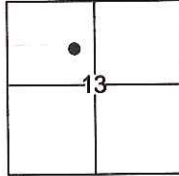


# CORNER RECORD

Document Number CR-16-460  
 County of San Joaquin, California

City of \_\_\_\_\_  
 Brief Legal Description Lot 1 Tract No. 1762, M&P 26-43



T.3N., R.4E., M.D.B.M.

### CORNER TYPE

Government Corner  Control   
 Meander  Property   
 Rancho  Other

Date of Survey August 24, 2016

### COORDINATES(Optional)

N. \_\_\_\_\_  
 E. \_\_\_\_\_  
 Zone \_\_\_\_\_ NAD27  NAD83   
 NAD83 Epoch \_\_\_\_\_  
 Elev. \_\_\_\_\_  
 Vert. Datum: NGVD29  NADV88   
 Meas. Units: Metric  Imperial

Corner - Left as found  Found and tagged  Established  Reestablished  Rebuilt

Identification and type of corner found: Evidence used to identify or procedure used to establish or reestablish the corner:  
See sketch.

A description of the physical condition of the monument as found and as set or reset: See sketch.

### SURVEYOR'S STATEMENT

This Corner Record was prepared by me or under my direction in conformance with  
 the Land Surveyor's Act on November 16, 2016.

Signed Joe Murphy P.L.S. or R.C.E. No.: 7269



### COUNTY SURVEYOR'S STATEMENT

This Corner Record was received November 21, 2016 and examined  
 and filed December 9, 2016.

Signed Wm D. Smith P.L.S. or R.C.E. No.: 4042

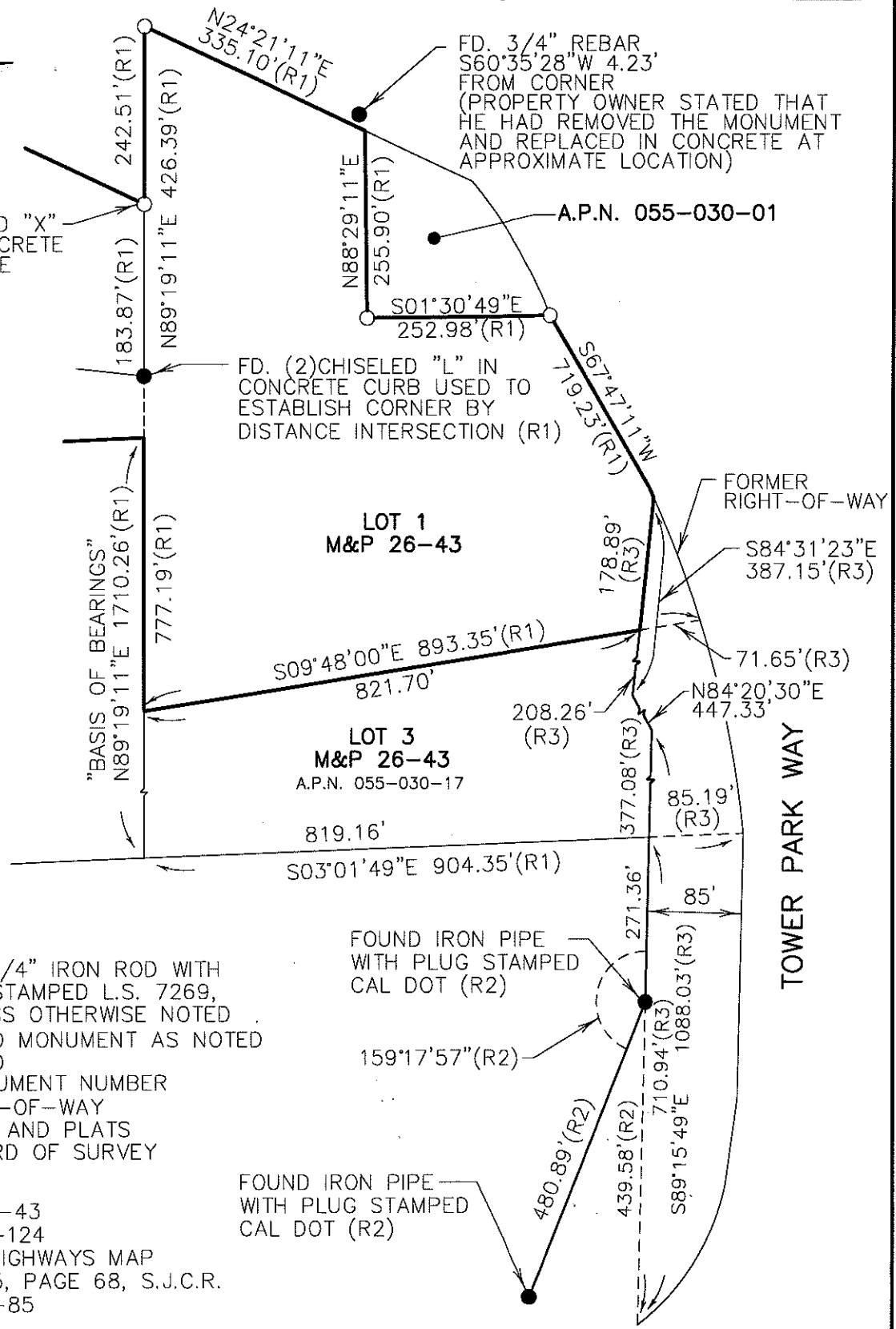
Title County Surveyor

County Surveyor's Comment \_\_\_\_\_





SET CHISELED "X"  
TOP OF CONCRETE  
CULVERT PIPE



**LEGEND**

- SET 3/4" IRON ROD WITH CAP STAMPED L.S. 7269, UNLESS OTHERWISE NOTED
- FOUND MONUMENT AS NOTED
- FD. FOUND
- I.N. INSTRUMENT NUMBER
- R/W RIGHT-OF-WAY
- M&P MAPS AND PLATS
- R.S. RECORD OF SURVEY

**REFERENCES:**

- (R1) M&P 26-43
- (R2) R.S. 38-124
- (R3) STATE HIGHWAYS MAP BOOK 15, PAGE 68, S.J.C.R.
- (R4) R.S. 23-85

**NOTE:**

1. DISTANCES SHOWN ARE GROUND DISTANCES AND RECORD DISTANCES SHOWN ARE CONVERTED FROM GRID DISTANCES BASED ON THE RECORD MAPS SCALE FACTOR.

**DILLON & MURPHY**  
CONSULTING CIVIL ENGINEERS  
ENGINEERING • PLANNING • SURVEYING  
847 N. CLUFF AVENUE, SUITE A2, LODI, CALIFORNIA 95240 (209) 334-6613  
1646