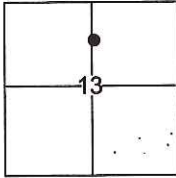


CORNER RECORD

Document Number CR-16-459
County of San Joaquin, California

City of _____
Brief Legal Description Lot 3 Tract No. 1762, M&P 26-43



T.3N., R.4E., M.D.B.M.

CORNER TYPE

Government Corner Control
Meander Property
Rancho Other

Date of Survey August 24, 2016

COORDINATES(Optional)

N. _____
E. _____
Zone _____ NAD27 NAD83
NAD83 Epoch _____
Elev. _____
Vert. Datum: NGVD29 NADV88
Meas. Units: Metric Imperial

Corner - Left as found Found and tagged Established Reestablished Rebuilt

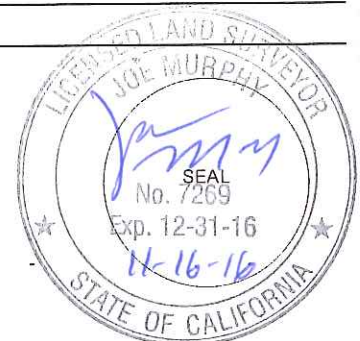
Identification and type of corner found: Evidence used to identify or procedure used to establish or reestablish the corner:
See sketch.

A description of the physical condition of the monument as found and as set or reset: See sketch.

SURVEYOR'S STATEMENT

This Corner Record was prepared by me or under my direction in conformance with
the Land Surveyor's Act on November 16, 2016.

Signed Joe Murphy (P.L.S.) or R.C.E. No.: 7269



COUNTY SURVEYOR'S STATEMENT

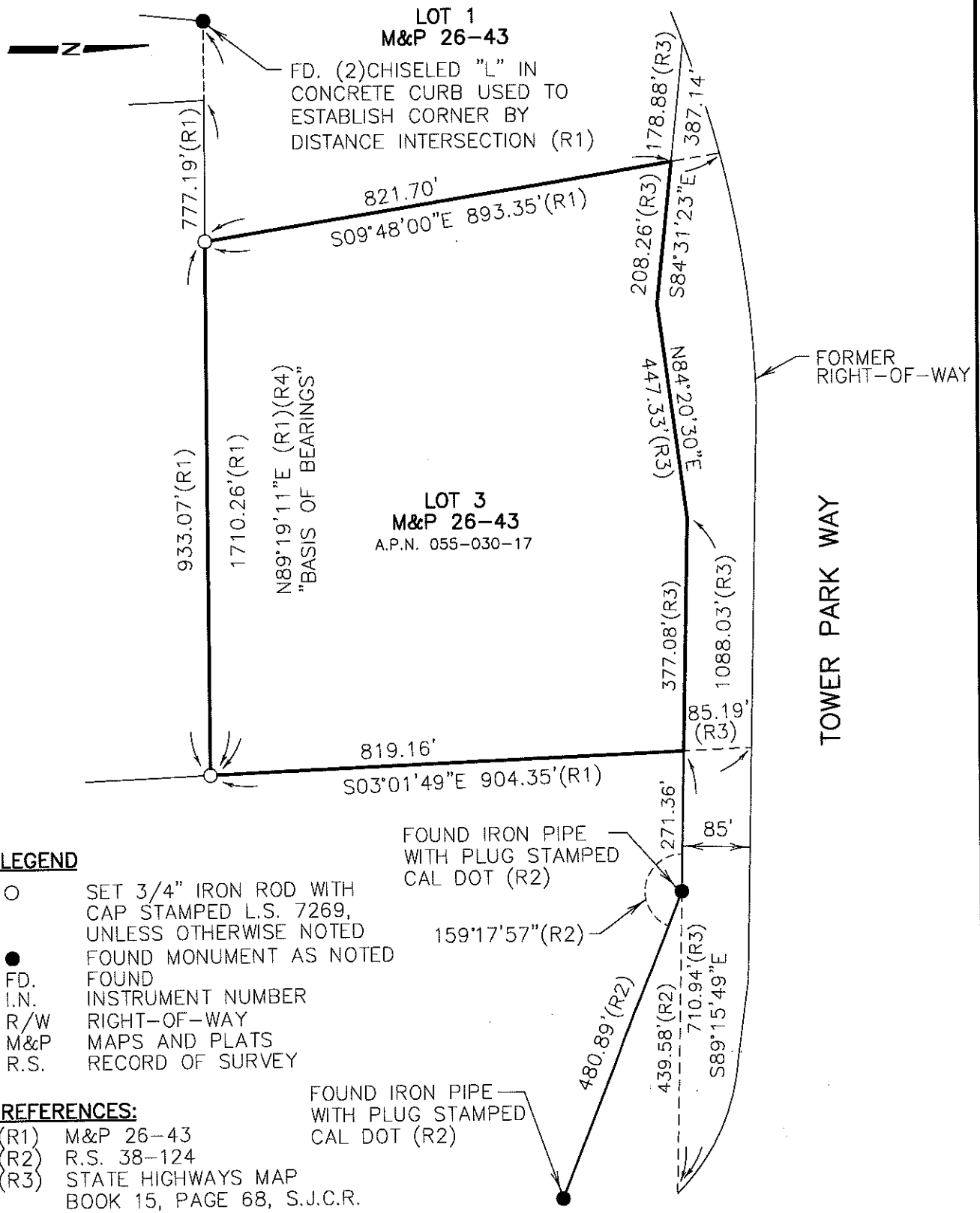
This Corner Record was received November 21, 2016 and examined
and filed December 9, 2016.

Signed Warren D. Smith P.L.S. or R.C.E. No.: 4842

Title County Surveyor

County Surveyor's Comment _____





LEGEND

- SET 3/4" IRON ROD WITH CAP STAMPED L.S. 7269, UNLESS OTHERWISE NOTED
- FOUND MONUMENT AS NOTED
- FD. FOUND
- I.N. INSTRUMENT NUMBER
- R/W RIGHT-OF-WAY
- M&P MAPS AND PLATS
- R.S. RECORD OF SURVEY

REFERENCES:

- (R1) M&P 26-43
- (R2) R.S. 38-124
- (R3) STATE HIGHWAYS MAP BOOK 15, PAGE 68, S.J.C.R.
- (R4) R.S. 23-85

NOTE:

1. DISTANCES SHOWN ARE GROUND DISTANCES AND RECORD DISTANCES SHOWN ARE CONVERTED FROM GRID DISTANCES BASED ON THE RECORD MAPS SCALE FACTOR.

DILLON & MURPHY
 CONSULTING CIVIL ENGINEERS
 ENGINEERING • PLANNING • SURVEYING
 847 N. CLUFF AVENUE, SUITE A2, LODI, CALIFORNIA 95240 (209) 334-6613
 1646