

CORNER RECORD

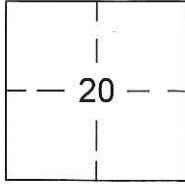
Document Number CR-16-458
County of SAN JOAQUIN, California

City of RIPON

Brief Legal Description TRACT NO. 1748, OLIVE GROVE ESTATES UNIT NO. 1, RECORDED IN BOOK 27 OF MAPS & PLATS, PAGE 22, IN S.E. 1/4 OF SECTION 20, T. 2 S., R. 8 E., M.D.M.

CORNER TYPE:

COORDINATES (Optional)



T. 2 S., R. 8 E.

Government Corner Control
Meander Property
Rancho Other

Date of Survey OCTOBER 17, 2016

N. _____
E. _____
Zone _____ NAD27 NAD83
NAD83 Epoch _____
Elev. _____
Vert. Datum: NGVD29 NAVD88
Meas. Units Metric Imperial

Corner- Left as found Found and tagged Established Reestablished Rebuilt

Identification and type of corner found: Evidence used to identify or procedure used to establish or reestablish the corner:
FOUND CENTERLINE MONUMENTS IN SPRING CREEK DRIVE PER OLIVE GROVE ESTATES UNIT NO. 1 RECORDED IN BOOK 27 OF MAPS & PLATS, PAGE 22, SAN JOAQUIN COUNTY RECORDS.
LOCATED MONUMENTS BY G.P.S. TIED TO CITY OF RIPON G.P.S. SURVEY CONTROL NETWORK RECORDED IN BOOK 35 OF SURVEYS, PAGE 196, SAN JOAQUIN COUNTY RECORDS.
MONUMENTS ARE IN AREA OF FUTURE ROAD RESURFACING.

A description of the physical condition of the monument as found and as set or reset:
SEE PAGE 2 FOR MONUMENT DESCRIPTIONS.

SURVEYOR'S STATEMENT

This Corner Record was prepared by me or under my direction in conformance with the Land Surveyor's Act on November 8, 2016.

Signed [Signature] P.L.S. No. 7823

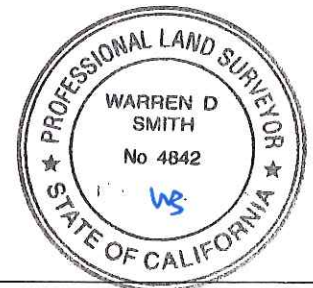


COUNTY SURVEYOR'S STATEMENT

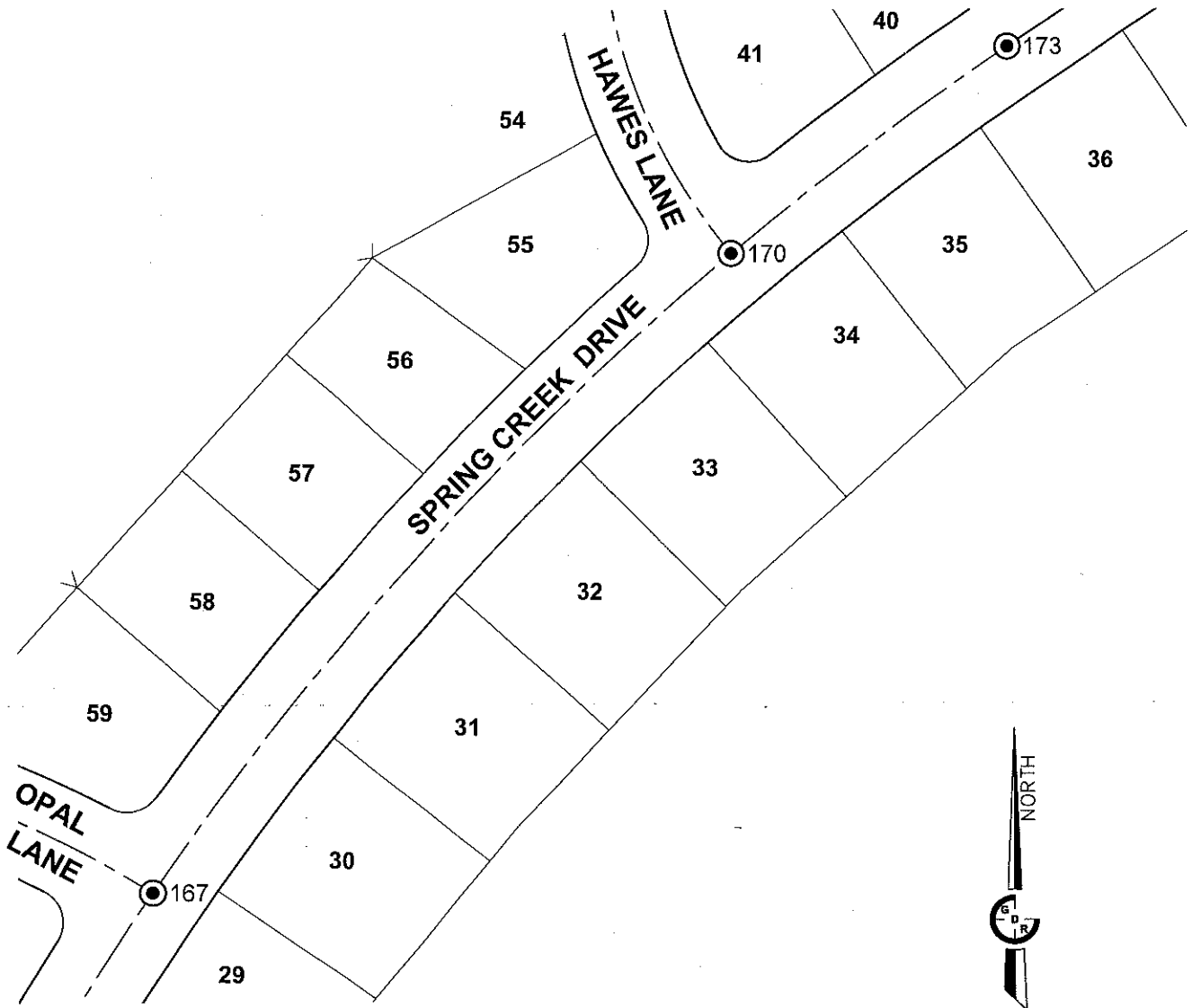
This Corner Record was received November 11, 2016 and examined and filed December 9, 2016.

Signed [Signature] P.L.S. or R.C.E. No. 4842

Title County Surveyor



County Surveyor's Comment: _____



SCALE 1" = 100'

GRID COORDINATES		
MON. NO.	NORTHING	EASTING
167	2093769.47	6384753.79
170	2094137.62	6385086.73
173	2094256.71	6385245.99

NOTE:
 LOCATED MONUMENTS BY G.P.S. TIED TO CITY OF RIPON G.P.S. SURVEY CONTROL NETWORK RECORDED IN BOOK 35 OF SURVEYS, PAGE 196, SAN JOAQUIN COUNTY RECORDS.

LEGEND

- FOUND 3/4" IRON PIPE TAGGED R.C.E. 29547 IN MONUMENT WELL PER (A), UNLESS OTHERWISE NOTED.
- (A) BOOK 27 OF MAPS AND PLATS, PAGE 22