

CORNER RECORD

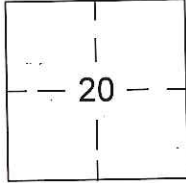
Document Number CR-16-450
County of SAN JOAQUIN, California

City of RIPON

Brief Legal Description TRACT NO. 2986, OAK TERRACE ESTATES RECORDED IN BOOK 34 OF MAPS & PLATS, PAGE 79, IN N.E. 1/4 OF SECTION 20, T. 2 S., R. 8 E., M.D.M.

CORNER TYPE:

COORDINATES (Optional)



T. 2 S., R. 8 E.

Government Corner Control
Meander Property
Rancho Other
Date of Survey OCTOBER 19, 2016

N. _____
E. _____
Zone _____ NAD27 NAD83
NAD83 Epoch _____
Elev. _____
Vert. Datum: NGVD29 NAVD88
Meas. Units Metric Imperial

Corner- Left as found Found and tagged Established Reestablished Rebuilt

Identification and type of corner found: Evidence used to identify or procedure used to establish or reestablish the corner:
FOUND CENTERLINE MONUMENTS IN OAK TERRACE COURT AND MANLEY ROAD.
LOCATED MONUMENTS BY G.P.S. TIED TO CITY OF RIPON G.P.S. SURVEY CONTROL NETWORK
RECORDED IN BOOK 35 OF SURVEYS, PAGE 196, SAN JOAQUIN COUNTY RECORDS.
MONUMENTS ARE IN AREA OF FUTURE ROAD RESURFACING.

A description of the physical condition of the monument as found and as set or reset:
SEE PAGE 2 FOR MONUMENT DESCRIPTIONS.

SURVEYOR'S STATEMENT

This Corner Record was prepared by me or under my direction in conformance with the Land Surveyor's Act on November 29, 2016.
Signed [Signature] P.L.S. No. 7823

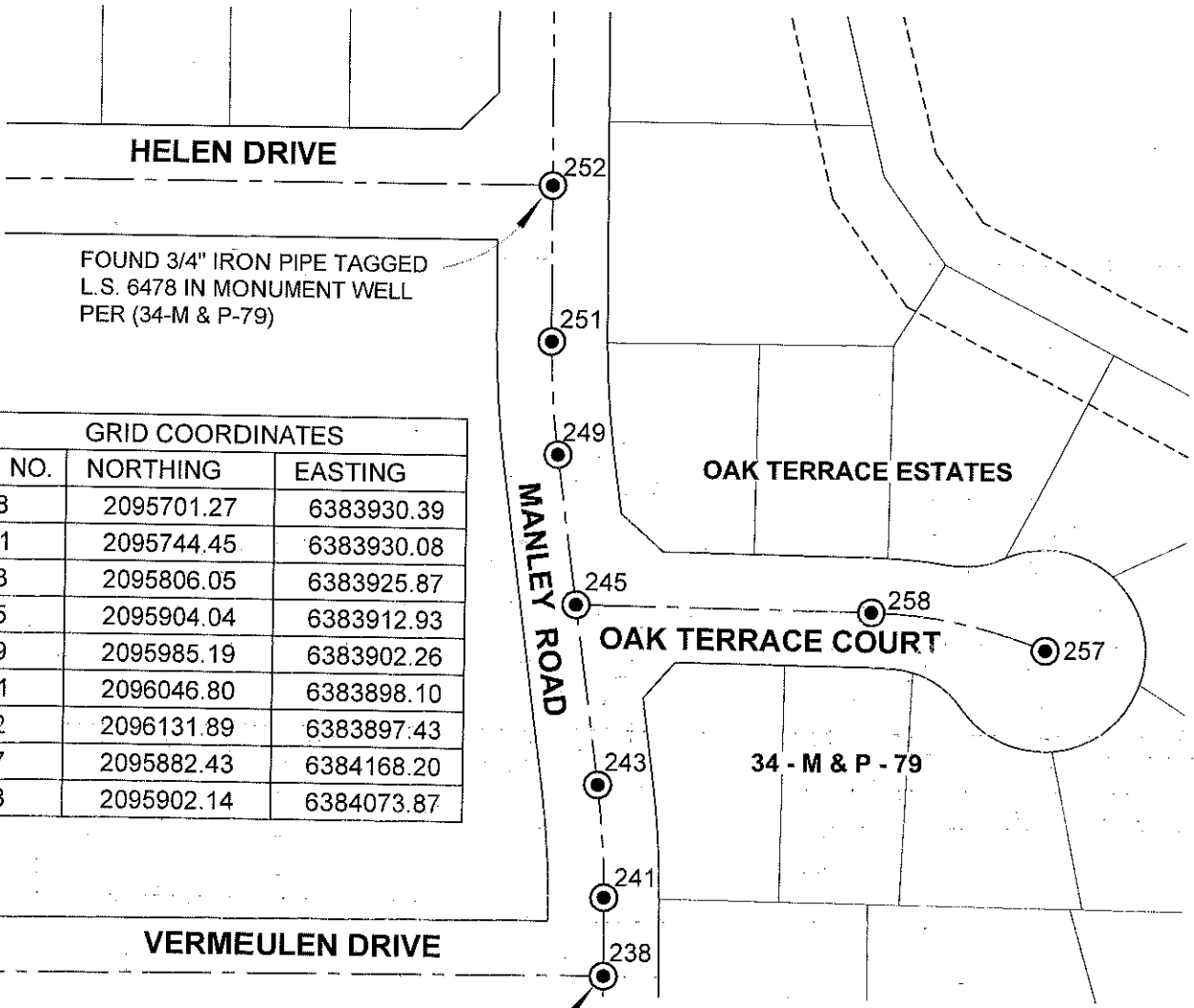


COUNTY SURVEYOR'S STATEMENT

This Corner Record was received December 1, 2016 and examined and filed December 9, 2016.
Signed [Signature] P.L.S. or R.C.E. No. 4842
Title County Surveyor



County Surveyor's Comment: _____



FOUND 3/4" IRON PIPE TAGGED
L.S. 6478 IN MONUMENT WELL
PER (34-M & P-79)

GRID COORDINATES		
MON. NO.	NORTHING	EASTING
238	2095701.27	6383930.39
241	2095744.45	6383930.08
243	2095806.05	6383925.87
245	2095904.04	6383912.93
249	2095985.19	6383902.26
251	2096046.80	6383898.10
252	2096131.89	6383897.43
257	2095882.43	6384168.20
258	2095902.14	6384073.87

FOUND 3/4" IRON PIPE TAGGED
L.S. 6406 IN MONUMENT WELL
PER CORNER RECORD NO. 11-52

NOTE:
LOCATED MONUMENTS BY G.P.S. TIED TO CITY
OF RIPON G.P.S. SURVEY CONTROL NETWORK
RECORDED IN BOOK 35 OF SURVEYS, PAGE
196, SAN JOAQUIN COUNTY RECORDS.

LEGEND

- FOUND 3/4" IRON PIPE TAGGED R.C.E. 31008 IN MONUMENT WELL PER BOOK 34 OF MAPS & PLATS, PAGE 79, UNLESS OTHERWISE NOTED.



SCALE 1" = 100'