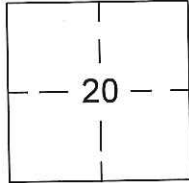


CORNER RECORD

Document Number CR-16-449
County of SAN JOAQUIN, California

City of RIPON

Brief Legal Description PORTION OF NORTH 1/2 OF SECTION 20, T. 2 S., R. 8 E., M.D.M.



T. 2 S., R. 8 E.

CORNER TYPE:

Government Corner Control
Meander Property
Rancho Other
Date of Survey OCTOBER 19, 2016

COORDINATES (Optional)

N. _____
E. _____
Zone _____ NAD27 NAD83
NAD83 Epoch _____
Elev. _____
Vert. Datum: NGVD29 NAVD88
Meas. Units Metric Imperial

Corner- Left as found Found and tagged Established Reestablished Rebuilt

Identification and type of corner found: Evidence used to identify or procedure used to establish or reestablish the corner:

FOUND CENTERLINE MONUMENTS IN NANCY DRIVE, JORDANOLO DRIVE, AZALEA STREET AND MANLEY ROAD.

LOCATED MONUMENT BY G.P.S. TIED TO CITY OF RIPON G.P.S. SURVEY CONTROL NETWORK RECORDED IN BOOK 35 OF SURVEYS, PAGE 196, SAN JOAQUIN COUNTY RECORDS.

MONUMENTS ARE IN AREA OF FUTURE ROAD RESURFACING.

A description of the physical condition of the monument as found and as set or reset: _____

SEE PAGE 2 FOR MONUMENT DESCRIPTIONS.

SURVEYOR'S STATEMENT

This Corner Record was prepared by me or under my direction in conformance with the Land Surveyor's Act on November 8, 2016.

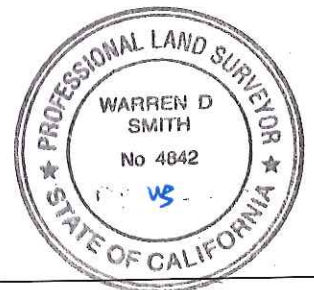
Signed Sean Harp P.L.S. No. 7823



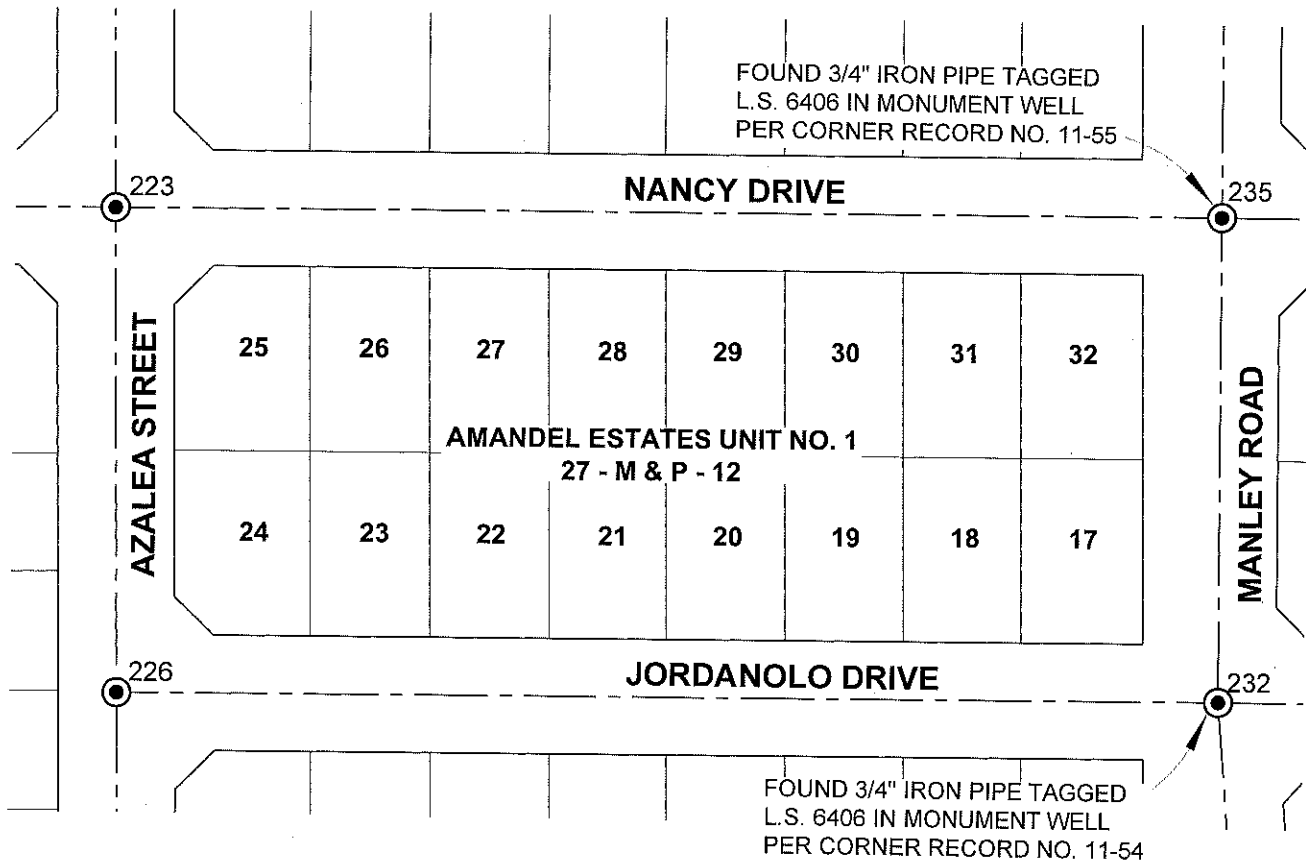
COUNTY SURVEYOR'S STATEMENT

This Corner Record was received November 11, 2016 and examined and filed December 9, 2016.

Signed Warren D. Smith P.L.S. or R.C.E. No. 4842
Title County Surveyor



County Surveyor's Comment: _____



| GRID COORDINATES | | |
|------------------|------------|------------|
| MON. NO. | NORTHING | EASTING |
| 223 | 2095439.66 | 6383362.16 |
| 226 | 2095187.65 | 6383366.08 |
| 232 | 2095191.21 | 6383933.93 |
| 235 | 2095443.21 | 6383932.12 |

NOTE:
LOCATED MONUMENTS BY G.P.S. TIED TO CITY
OF RIPON G.P.S. SURVEY CONTROL NETWORK
RECORDED IN BOOK 35 OF SURVEYS, PAGE
196, SAN JOAQUIN COUNTY RECORDS.

LEGEND

- FOUND 3/4" IRON PIPE TAGGED L.S. 4876 IN MONUMENT WELL PER BOOK 27 OF MAPS & PLATS, PAGE 12, UNLESS OTHERWISE NOTED.



SCALE 1" = 100'