

# CORNER RECORD

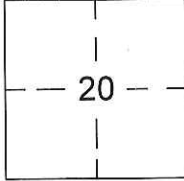
Document Number CR-16-448  
County of SAN JOAQUIN, California

City of RIPON

Brief Legal Description TRACT NO. 1899, AMANDEL ESTATES UNIT NO. 2, RECORDED IN BOOK 27 OF MAPS & PLATS, PAGE 13, IN N.W. 1/4 OF SECTION 20, T. 2 S., R. 8 E., M.D.M.

CORNER TYPE:

COORDINATES (Optional)



T. 2 S., R. 8 E.

Government Corner  Control   
Meander  Property   
Rancho  Other

Date of Survey OCTOBER 19, 2016

N. \_\_\_\_\_  
E. \_\_\_\_\_  
Zone \_\_\_\_\_ NAD27  NAD83   
NAD83 Epoch \_\_\_\_\_  
Elev. \_\_\_\_\_  
Vert. Datum: NGVD29  NAVD88   
Meas. Units Metric  Imperial

Corner- Left as found  Found and tagged  Established  Reestablished  Rebuilt

Identification and type of corner found: Evidence used to identify or procedure used to establish or reestablish the corner:

FOUND CENTERLINE MONUMENT IN SULTANA COURT PER AMANDEL ESTATES UNIT NO. 2

RECORDED IN BOOK 27 OF MAPS & PLATS, PAGE 13, SAN JOAQUIN COUNTY RECORDS.

LOCATED MONUMENT BY G.P.S. TIED TO CITY OF RIPON G.P.S. SURVEY CONTROL NETWORK

RECORDED IN BOOK 35 OF SURVEYS, PAGE 196, SAN JOAQUIN COUNTY RECORDS.

MONUMENT IS IN AREA OF FUTURE ROAD RESURFACING.

A description of the physical condition of the monument as found and as set or reset: \_\_\_\_\_

SEE PAGE 2 FOR MONUMENT DESCRIPTION.

## SURVEYOR'S STATEMENT

This Corner Record was prepared by me or under my direction in conformance with the Land Surveyor's Act on November 8, 2016.

Signed [Signature] P.L.S. No. 7823



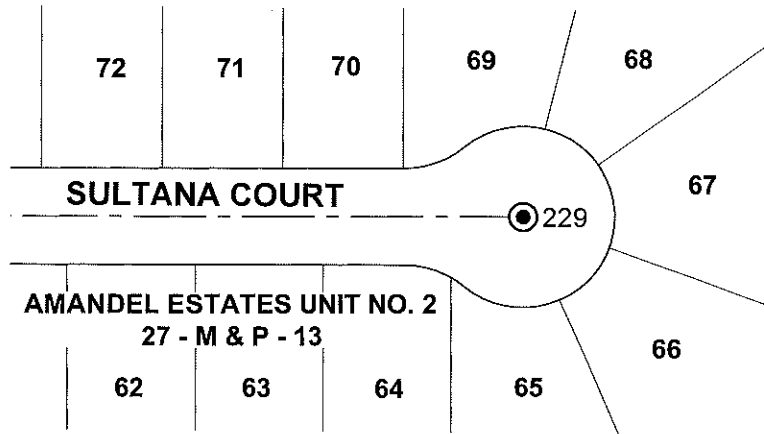
## COUNTY SURVEYOR'S STATEMENT

This Corner Record was received November 11, 2016 and examined and filed December 9, 2016.

Signed [Signature] P.L.S. or R.C.E. No. 4842  
Title County Surveyor



County Surveyor's Comment: \_\_\_\_\_



GRID COORDINATES		
MON. NO.	NORTHING	EASTING
229	2095187.11	6383106.06

**NOTE:**  
 LOCATED MONUMENTS BY G.P.S. TIED TO CITY  
 OF RIPON G.P.S. SURVEY CONTROL NETWORK  
 RECORDED IN BOOK 35 OF SURVEYS, PAGE  
 196, SAN JOAQUIN COUNTY RECORDS.

**LEGEND**

- FOUND 3/4" IRON PIPE TAGGED L.S. 4876 IN MONUMENT WELL PER BOOK 27 OF MAPS & PLATS, PAGE 13.



SCALE 1" = 100'