

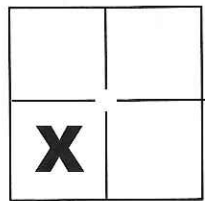
CORNER RECORD

Document Number CR-16-446

City of _____

County of San Joaquin, California

Brief Legal Description Parcel shown on R.S. 13-201, S.J.C.R.



CORNER TYPE

COORDINATES(Optional)

Government Corner Control
 Meander Property
 Rancho Other

N. _____
 E. _____
 Zone _____ NAD27 NAD83
 NAD83 Epoch _____
 Elev. _____
 Vert. Datum: NGVD29 NADV88
 Meas. Units: Metric Imperial

Sec. 7, T. 2S., R. 8E.,
M.D.B.&M.

Date of Survey September 8, 2016

Corner - Left as found Found and tagged Established Reestablished Rebuilt

Identification and type of corner found: Evidence used to identify or procedure used to establish or reestablish the corner:
See Sheet 2

A description of the physical condition of the monument as found and as set or reset:
See Sheet 2

SURVEYOR'S STATEMENT

This Corner Record was prepared by me or under my direction in conformance with
 the Land Surveyor's Act on Sept. 9, 2016.
 Signed Michael L. Quartaroli P.L.S. or R.C.E. No.: L.S. 4450



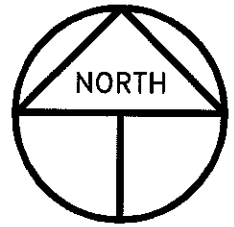
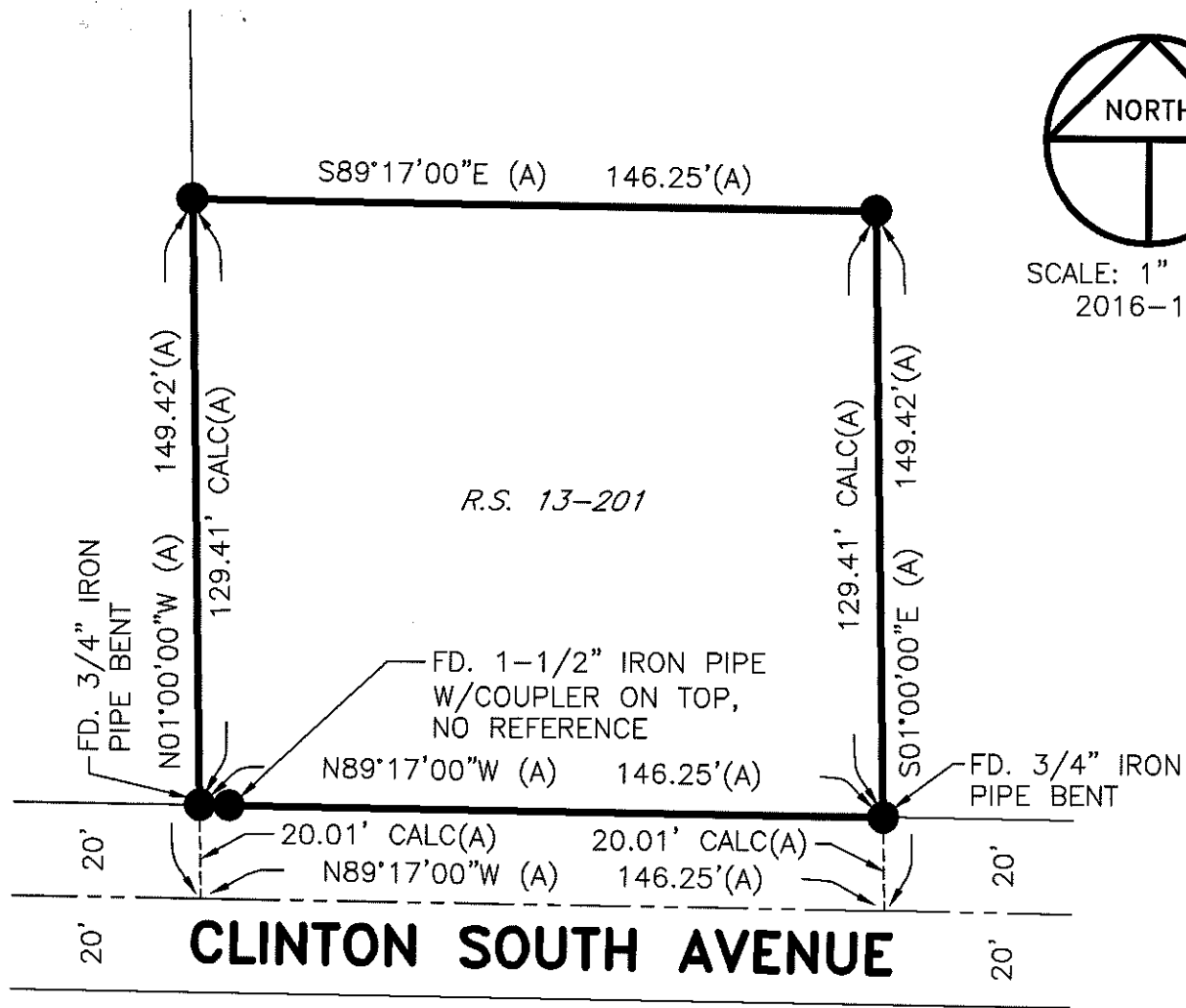
COUNTY SURVEYOR'S STATEMENT

This Corner Record was received October 26, 2016 and examined
 and filed December 9, 2016.
 Signed Warren D. Smith P.L.S. or R.C.E. No.: 4042



Title County Surveyor

County Surveyor's Comment _____



SCALE: 1" = 40'
2016-190

REFERENCE

(A) R.S. 13-201, S.J.C.R.

LEGEND

- INDICATES FOUND 3/4" IRON PIPE, NOT TAGGED, SET PLASTIC CAP STAMPED LS 4450, UNLESS NOTED OTHERWISE.
- R.S. INDICATES RECORD OF SURVEY, BOOK AND PAGE, S.J.C.R.
- S.J.C.R. INDICATES SAN JOAQUIN COUNTY RECORDS