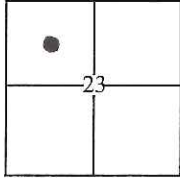


CORNER RECORD

Document Number CR-16-425
County of San Joaquin, California

City of Stockton
Brief Legal Description Centerlines of Swain Rd. and Montauban Ave.



T2N R6E MDM

CORNER TYPE

Government Corner Control
Meander Property
Rancho Other

Date of Survey 10/18/16

COORDINATES(Optional)

N. _____
E. _____
Zone _____ NAD27 NAD83
NAD83 Epoch _____
Elev. _____
Vert. Datum: NGVD29 NADV88
Meas. Units: Metric Imperial

Corner - Left as found Found and tagged Established Reestablished Rebuilt

Identification and type of corner found: Evidence used to identify or procedure used to establish or reestablish the corner:

Found 3/4" Iron Pin with tag stamped L.S. 4876 in a monument well.

A description of the physical condition of the monument as found and as set or reset:

Monument was destroyed during construction of traffic circle and replaced with 5/8" rebar with cap, L.S. 8247, in a monument well.

SURVEYOR'S STATEMENT

This Corner Record was prepared by me or under my direction in conformance with the Land Surveyor's Act on October 18, 2016.

Signed [Signature] P.L.S. or R.C.E. No.: 8247



COUNTY SURVEYOR'S STATEMENT

This Corner Record was received October 21, 2016 and examined and filed October 27, 2016.

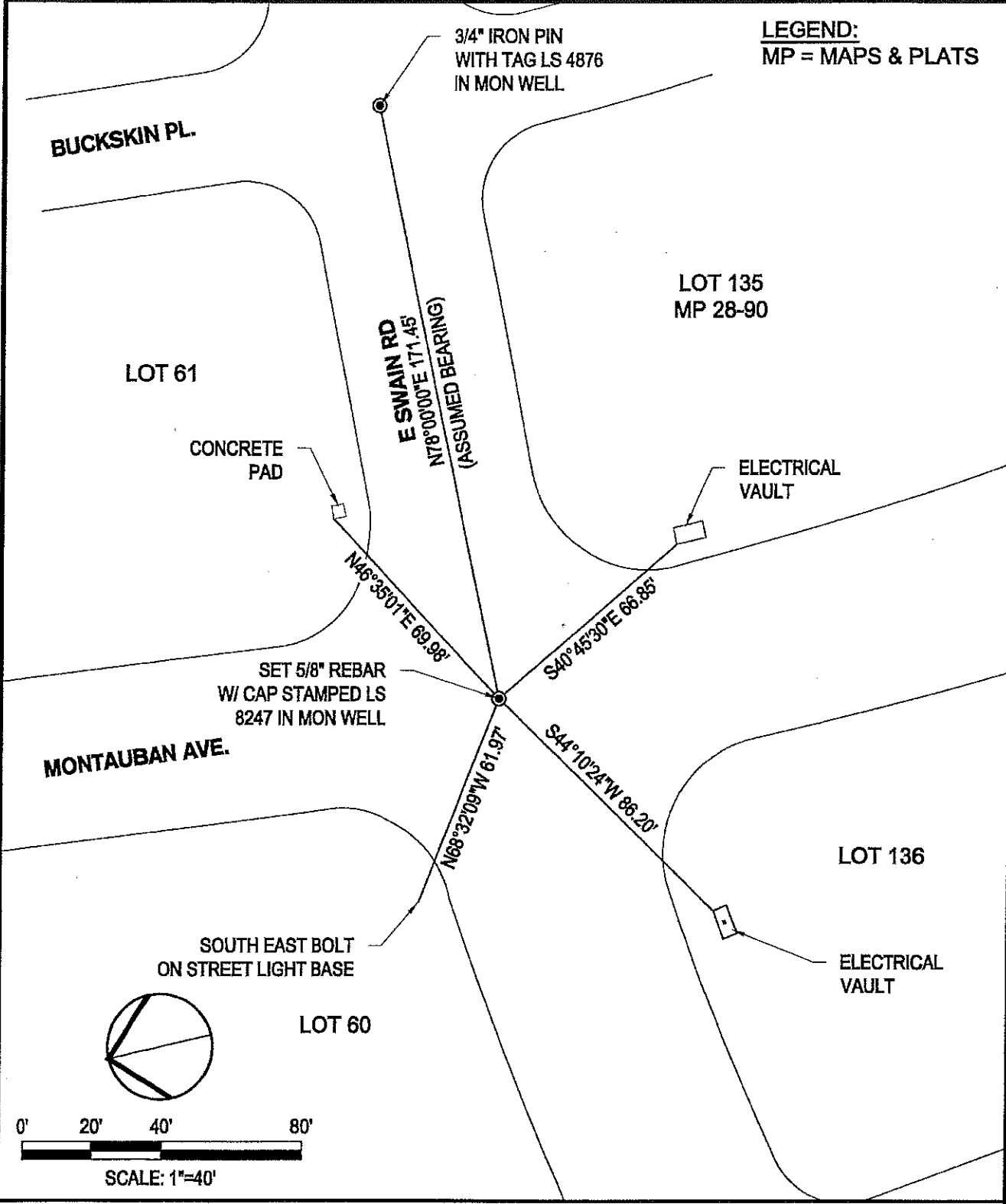
Signed [Signature] P.L.S. or R.C.E. No.: 4842

Title County Surveyor

County Surveyor's Comment _____



LEGEND:
MP = MAPS & PLATS



F:\13\projects\13467 City of Stockton Swain Traffic Circle\Survey\13467-TO-6-28-14 (Rotated).dwg

10/18/16

DATE	08/31/16
DESIGN	LZ
DRAWN	DW
JOB NO.	13467

SIEGFRIED

3244 Brookside Road, Suite 100 Stockton, California 95219
209-948-2021 www.siegfriedeng.com Fx: 209-942-0214

- CIVIL ENGINEERING
- STRUCTURAL ENGINEERING
- LAND SURVEYING
- LANDSCAPE ARCHITECTURE

SCALE:	AS SHOWN
SHEET	
2 OF: 2	