

CORNER RECORD

Document Number CR-16-424

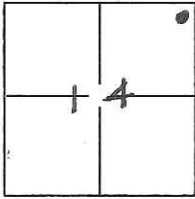
City of Unincorporated area

County of San Joaquin, California

Brief Legal Description Parcel "A" as shown on Record of Survey Book 10 Page 114, S.J.Co. Records

CORNER TYPE

COORDINATES(Optional)



T2N, R7E, MDM

Government Corner Control
 Meander Property
 Rancho Other

N. _____
 E. _____
 Zone _____ NAD27 NAD83
 NAD83 Epoch _____
 Elev. _____
 Vert. Datum: NGVD29 NADV88
 Meas. Units: Metric Imperial

Date of Survey December 15, 2014

Corner - Left as found Found and tagged Established Reestablished Rebuilt

Identification and type of corner found: Evidence used to identify or procedure used to establish or reestablish the corner:

Set 3/4" 24" long rebar with plastic cap stamped "LS 8080"

A description of the physical condition of the monument as found and as set or reset: See plat on back.

SURVEYOR'S STATEMENT

This Corner Record was prepared by me or under my direction in conformance with
 the Land Surveyor's Act on October 1, 2016.

Signed _____ P.L.S. or R.C.E. No.: 8080



COUNTY SURVEYOR'S STATEMENT

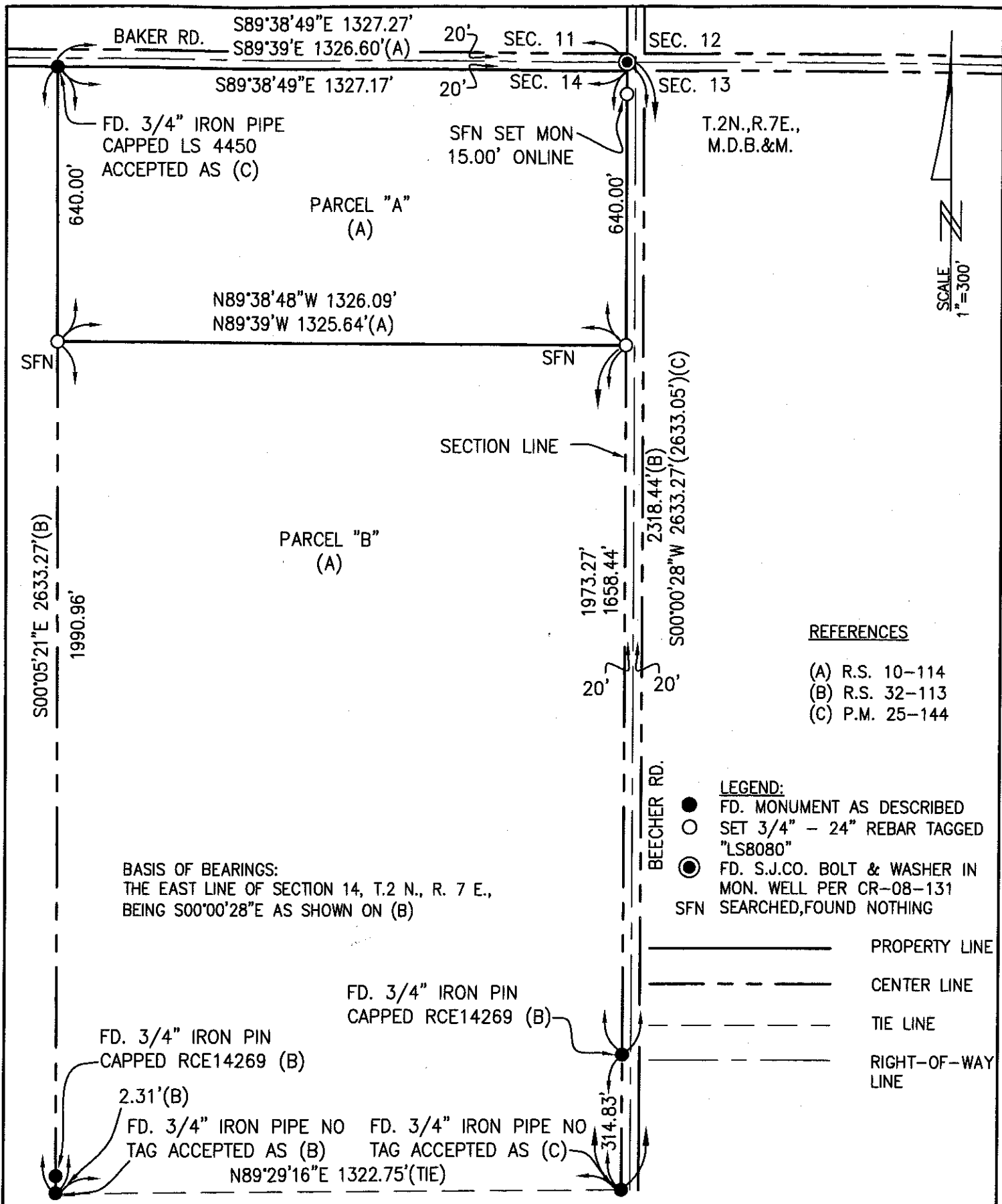
This Corner Record was received October 4, 2016 and examined
 and filed October 27, 2016.

Signed Warren D. Smith P.L.S. or R.C.E. No.: 4842

Title County Surveyor

County Surveyor's Comment _____





- REFERENCES**
- (A) R.S. 10-114
 - (B) R.S. 32-113
 - (C) P.M. 25-144

- LEGEND:**
- FD. MONUMENT AS DESCRIBED
 - SET 3/4" - 24" REBAR TAGGED "LS8080"
 - ⊙ FD. S.J.CO. BOLT & WASHER IN MON. WELL PER CR-08-131
 - SFN SEARCHED, FOUND NOTHING

- PROPERTY LINE
- - - - CENTER LINE
- - - - TIE LINE
- - - - RIGHT-OF-WAY LINE

BASIS OF BEARINGS:
 THE EAST LINE OF SECTION 14, T.2 N., R. 7 E.,
 BEING S00°00'28"E AS SHOWN ON (B)

D.B. Wilton

LAND SURVEYING

PO BOX 435 LODI CA 95241-0435
 (209) 747-0169 dbwsurvey@yahoo.com

PLAT OF PARCEL "A" ON R.S. 10-114
 S.J.C.R.