

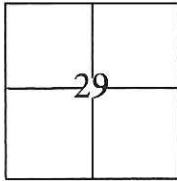
# CORNER RECORD

Document Number CR-16-422

City of Stockton

County of San Joaquin, California

Brief Legal Description Quail Lakes, Unit No. 1, Book of Maps & Plats 21, Pages 25.



T. 2 N. R. 6 E. M.D.B.&M.

### CORNER TYPE

Government Corner  Control   
 Meander  Property   
 Rancho  Other

Date of Survey December 17, 2015

### COORDINATES(Optional)

N. \_\_\_\_\_  
 E. \_\_\_\_\_  
 Zone \_\_\_\_\_ NAD27  NAD83   
 NAD83 Epoch \_\_\_\_\_  
 Elev. \_\_\_\_\_  
 Vert. Datum: NGVD29  NADV88   
 Meas. Units: Metric  Imperial

Corner - Left as found  Found and tagged  Established  Reestablished  Rebuilt

Identification and type of corner found: Evidence used to identify or procedure used to establish or reestablish the corner:

Used conventional survey methods and CR 15-278 to reestablish the position of obliterated cut crosses, as shown on page 2.

A description of the physical condition of the monument as found and as set or reset: \_\_\_\_\_

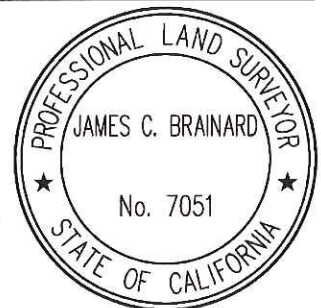
Found 3/4" iron pins, with tags stamped R.C.E. 8189, in monument wells and set cut cross with brass tags stamped L.S. 7051 in concrete as shown on page 2.

### SURVEYORS STATEMENT

This Corner Record was prepared by me or under my direction in conformance with

the Land Surveyors Act on July 28, 2016

Signed [Signature] P.L.S. or R.C.E. No.: 7051



### COUNTY SURVEYOR'S STATEMENT

This Corner Record was received October 3, 2016 and examined

and filed October 27, 2016

Signed [Signature] P.L.S. or R.C.E. No.: 4842

Title County Surveyor

County Surveyor's Comment \_\_\_\_\_



## STATEMENT OF PURPOSE:

THE PURPOSE OF THIS SURVEY IS TO RECORD AND REESTABLISH THE LOCATION OF MONUMENTS ORIGINALLY SHOWN ON CR 15-278 DISTURBED AFTER THE CONSTRUCTION OF UNDERGROUND IMPROVEMENTS. THE PURPOSE OF THIS SURVEY IS NOT TO MAKE PROPERTY LINE DETERMINATIONS. LOT LINES SHOWN HEREON ARE FOR GENERAL LOCATION AND INFORMATIONAL PURPOSES ONLY.

## BASIS OF BEARINGS:

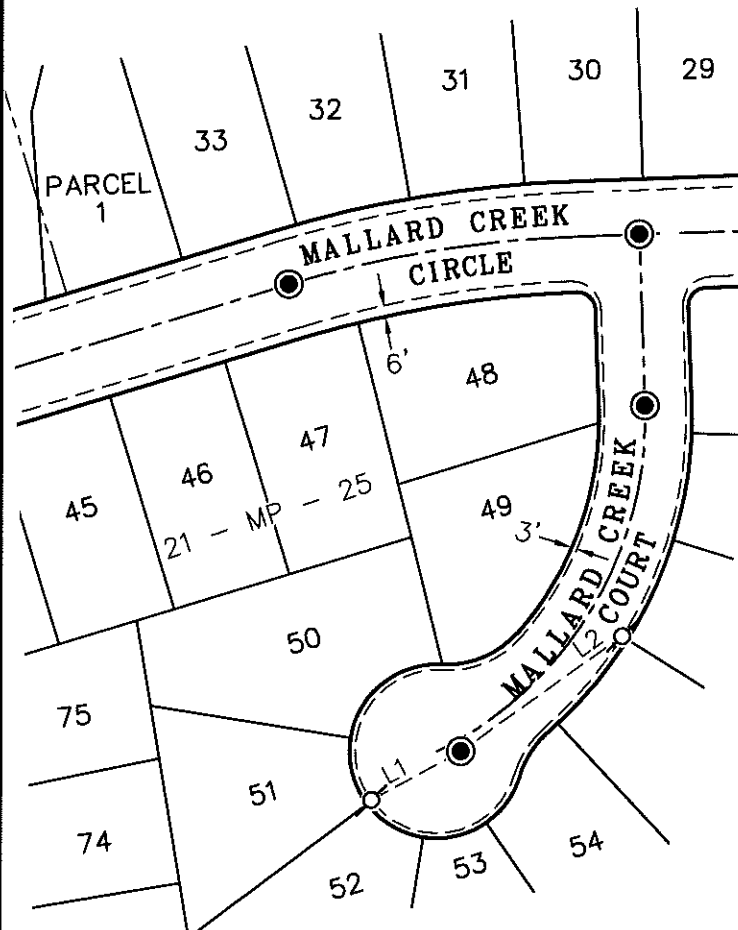
BEARINGS AND DISTANCES SHOWN ON THIS MAP ARE BASED UPON THE CENTERLINE OF MALLARD CREEK CIRCLE AS SHOWN ON THE MAP FILED FOR RECORD IN BOOK 10 OF PARCEL MAPS AT PAGE 137, SAN JOAQUIN COUNTY RECORDS, WHICH BEARS S73°00'W.

## LEGEND:

- ⊗ INDICATES SET CUT CROSS WITH BRASS TAG STAMPED L.S. 7051.
- INDICATES FOUND 3/4" IRON PINS IN WELL WITH BRASS TAGS STAMPED R.C.E. 8189 PER 21 RM 25, S.J.C.R.

## NOTE:

FIELD EFFORT PROCEDURE WAS TO DETERMINE THE LOCATION OF DISTURBED CUT CROSSES AT THEIR TYPICAL LOCATION AND TO RESET THEM. ONLY THOSE RESET ARE SHOWN.



MEASURED DATA		
LINE #	BEARING	DISTANCE
L1	N61°18'25"E	54.87'
L2	N54°36'59"E	107.33'