

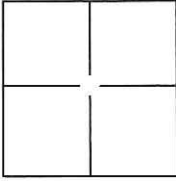
# CORNER RECORD

Document Number CR-16-421

City of Stockton

County of San Joaquin, California

Brief Legal Description Venetian Gardens, Unit No. 1, Book of Maps & Plats Vol. 21, Page 24.



### CORNER TYPE

Government Corner  Control   
Meander  Property   
Rancho  Other

Date of Survey April 15, 2016

### COORDINATES(Optional)

N. \_\_\_\_\_  
E. \_\_\_\_\_  
Zone III NAD27  NAD83   
NAD83 Epoch 1991.35  
Elev. \_\_\_\_\_  
Vert. Datum: NGVD29  NADV88   
Meas. Units: Metric  Imperial

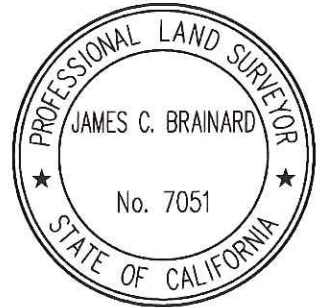
Corner - Left as found  Found and tagged  Established  Reestablished  Rebuilt

Identification and type of corner found: Evidence used to identify or procedure used to establish or reestablish the corner:  
Used conventional survey methods and CR 16-285 to reestablish the position of obliterated cut crosses, as shown on page 2.

A description of the physical condition of the monument as found and as set or reset:  
Found 3/4" iron pins, no tag, in monument wells and set cut cross with brass tags stamped L.S. 7051 in concrete as shown on page 2.

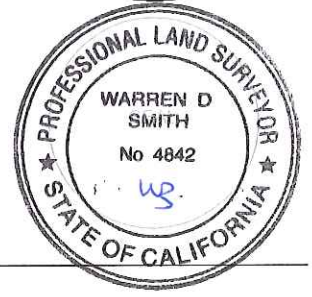
### SURVEYOR'S STATEMENT

This Corner Record was prepared by me or under my direction in conformance with the Land Surveyor's Act on April 18, 2016.  
Signed [Signature] P.L.S. or R.C.E. No.: 7051



### COUNTY SURVEYOR'S STATEMENT

This Corner Record was received October 3, 2016 and examined and filed October 27, 2016.  
Signed [Signature] P.L.S. or R.C.E. No.: 4842  
Title County Surveyor



County Surveyor's Comment \_\_\_\_\_

## STATEMENT OF PURPOSE:

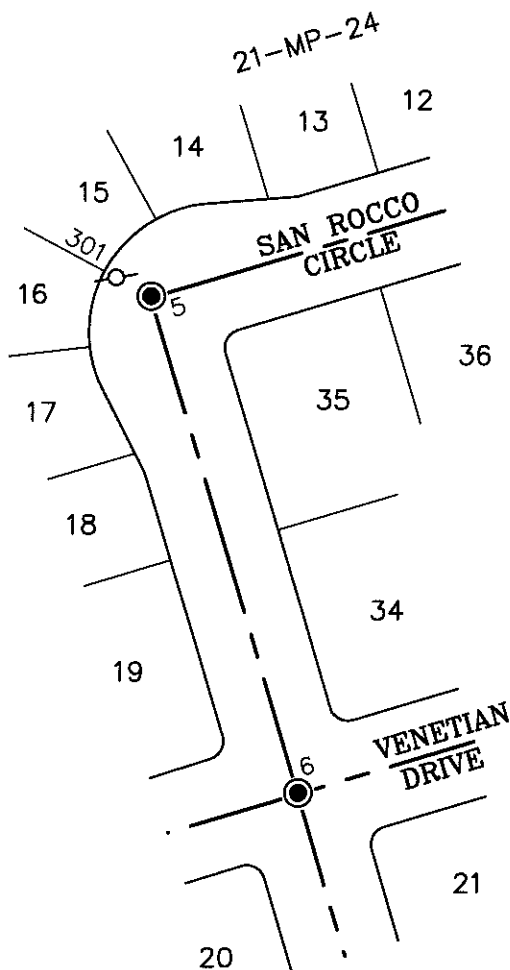
THE PURPOSE OF THIS SURVEY IS TO RECORD AND REESTABLISH THE LOCATION OF MONUMENTS ORIGINALLY SHOWN ON CR 16-285 DISTURBED AFTER THE CONSTRUCTION OF UNDERGROUND IMPROVEMENTS. THE PURPOSE OF THIS SURVEY IS NOT TO MAKE PROPERTY LINE DETERMINATIONS. LOT LINES SHOWN HEREON ARE FOR GENERAL LOCATION AND INFORMATIONAL PURPOSES ONLY.

## LEGEND:

- ⊗ INDICATES SET CUT CROSS WITH BRASS TAG STAMPED L.S. 7051.
- INDICATES FOUND 3/4" IRON PIN, NO TAG UNLESS STATED OTHERWISE, IN MONUMENT WELL

## DATUM STATEMENT:

COORDINATES SHOWN HEREON ARE GRID AND ARE BASED ON CITY OF STOCKTON MONUMENTS 235 AND 234, CALIFORNIA COORDINATE SYSTEM (CCS83), ZONE III, 1983 NAD, (1991.35 EPOCH STOCKTON & SAN JOAQUIN COUNTY GPS ADJUSTMENT) AND SHOWN ON RECORD OF SURVEY BOOK 33 OF SURVEYS, PAGE 20. THE PROJECT SPECIFIC COMBINED SCALE FACTOR IS 0.99993816.



### GRID COORDINATES (U.S. SURVEY FEET)

POINT	NORTHING	EASTING
5	2186234.94'	6323107.13'
6	2185966.69'	6323187.45'
301	2186245.16'	6323088.16'