

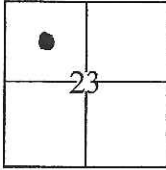
CORNER RECORD

Document Number CR-16-412

City of Stockton

County of San Joaquin, California

Brief Legal Description Centerlines of Swain Rd. and Montauban Ave.



T.2 N., R. 6 E., M.D.M.

CORNER TYPE

Government Corner Control
 Meander Property
 Rancho Other

Date of Survey 09/23/15

COORDINATES(Optional)

N. _____
 E. _____
 Zone _____ NAD27 NAD83
 NAD83 Epoch _____
 Elev. _____
 Vert. Datum: NGVD29 NADV88
 Meas. Units: Metric Imperial

Corner - Left as found Found and tagged Established Reestablished Rebuilt

Identification and type of corner found: Evidence used to identify or procedure used to establish or reestablish the corner:

3/4" Iron Pin with tag stamped L.S. 4876 in a monument well.

A description of the physical condition of the monument as found and as set or reset: _____

Monument found in good condition.

SURVEYOR'S STATEMENT

This Corner Record was prepared by me or under my direction in conformance with the Land Surveyor's Act on September 01, 2016.

Signed [Signature] P.L.S. or R.C.E. No.: 8247



COUNTY SURVEYOR'S STATEMENT

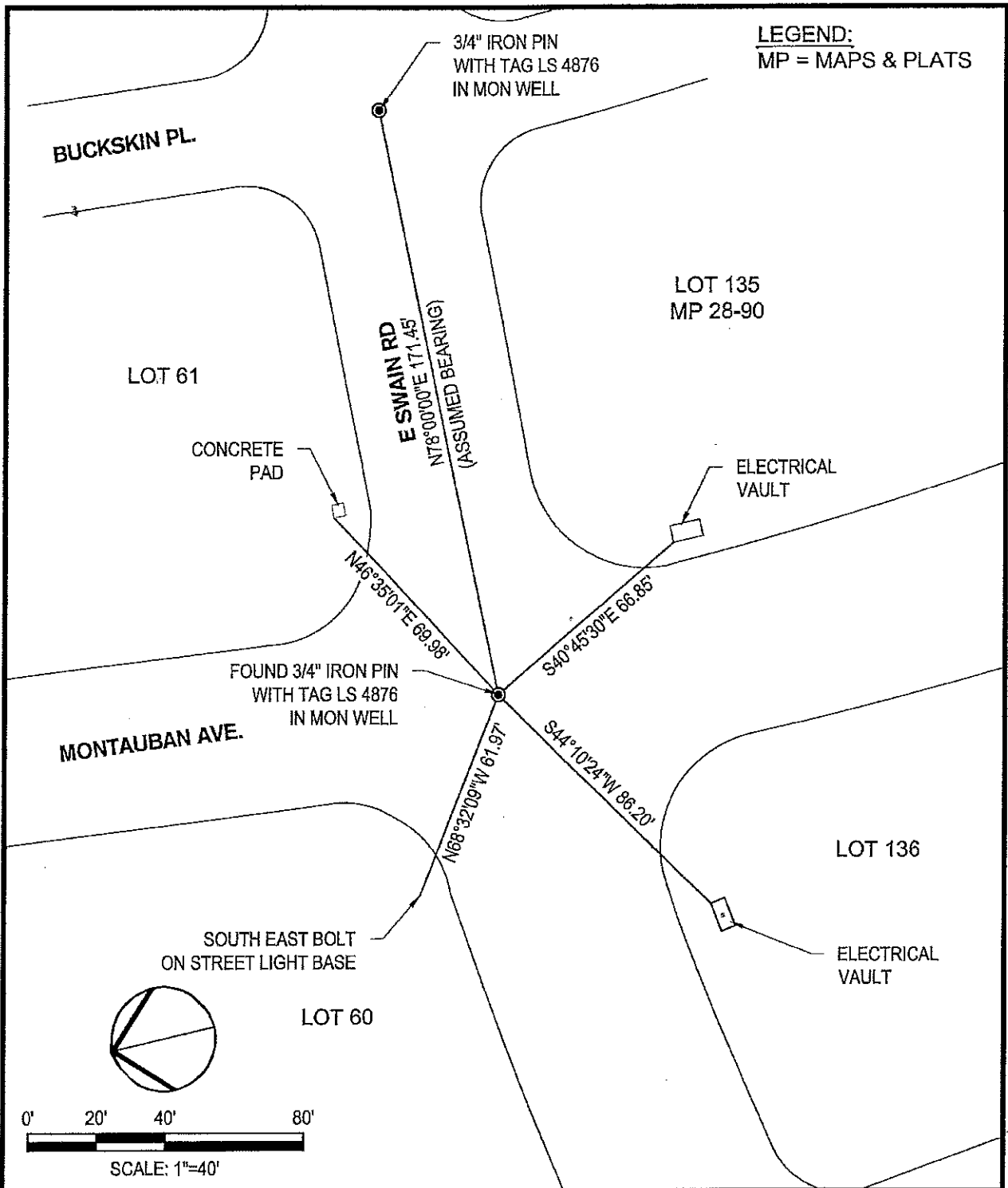
This Corner Record was received October 11, 2016 and examined and filed October 25, 2016.

Signed [Signature] P.L.S. or R.C.E. No.: 4842

Title County Surveyor

County Surveyor's Comment _____





F:\13\project\13467 City of Stockton Swain Traffic Circle\Survey\13467-TO-8-28-14 (Rotated).dwg

DATE	09/01/16
DESIGN	LZ
DRAWN	DW
JOB NO.	13467



SIEGFRIED

3244 Brookside Road, Suite 100 Stockton, California 95219
209-943-2021 www.siegfriedeng.com Fax: 209-942-0214

- CIVIL ENGINEERING
- STRUCTURAL ENGINEERING
- LAND SURVEYING
- LANDSCAPE ARCHITECTURE

SCALE:	AS SHOWN
SHEET	
	2 OF 2