

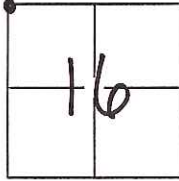
# CORNER RECORD

Document Number CR-16-392

City of Manteca

County of San Joaquin, California

Brief Legal Description Corner for Sections 8, 9, 16 and 17, Township 2 South, Range 7 East, M.D.B.M.



### CORNER TYPE

Government Corner  Control   
 Meander  Property   
 Rancho  Other

Date of Survey September 12, 2015

### COORDINATES(Optional)

N. \_\_\_\_\_  
 E. \_\_\_\_\_  
 Zone \_\_\_\_\_ NAD27  NAD83   
 NAD83 Epoch \_\_\_\_\_  
 Elev. \_\_\_\_\_  
 Vert. Datum: NGVD29  NADV88   
 Meas. Units: Metric  Imperial

Corner - Left as found  Found and tagged  Established  Reestablished  Rebuilt

Identification and type of corner found: Evidence used to identify or procedure used to establish or reestablish the corner:

SEE SKETCH ON PAGE 2

A description of the physical condition of the monument as found and as set or reset:

SEE SKETCH ON PAGE 2

### SURVEYOR'S STATEMENT

This Corner Record was prepared by me or under my direction in conformance with  
 the Land Surveyor's Act on Aug. 5th, 2016.

Signed Douglas F. Banks P.L.S. or R.C.E. No.: 8159



### COUNTY SURVEYOR'S STATEMENT

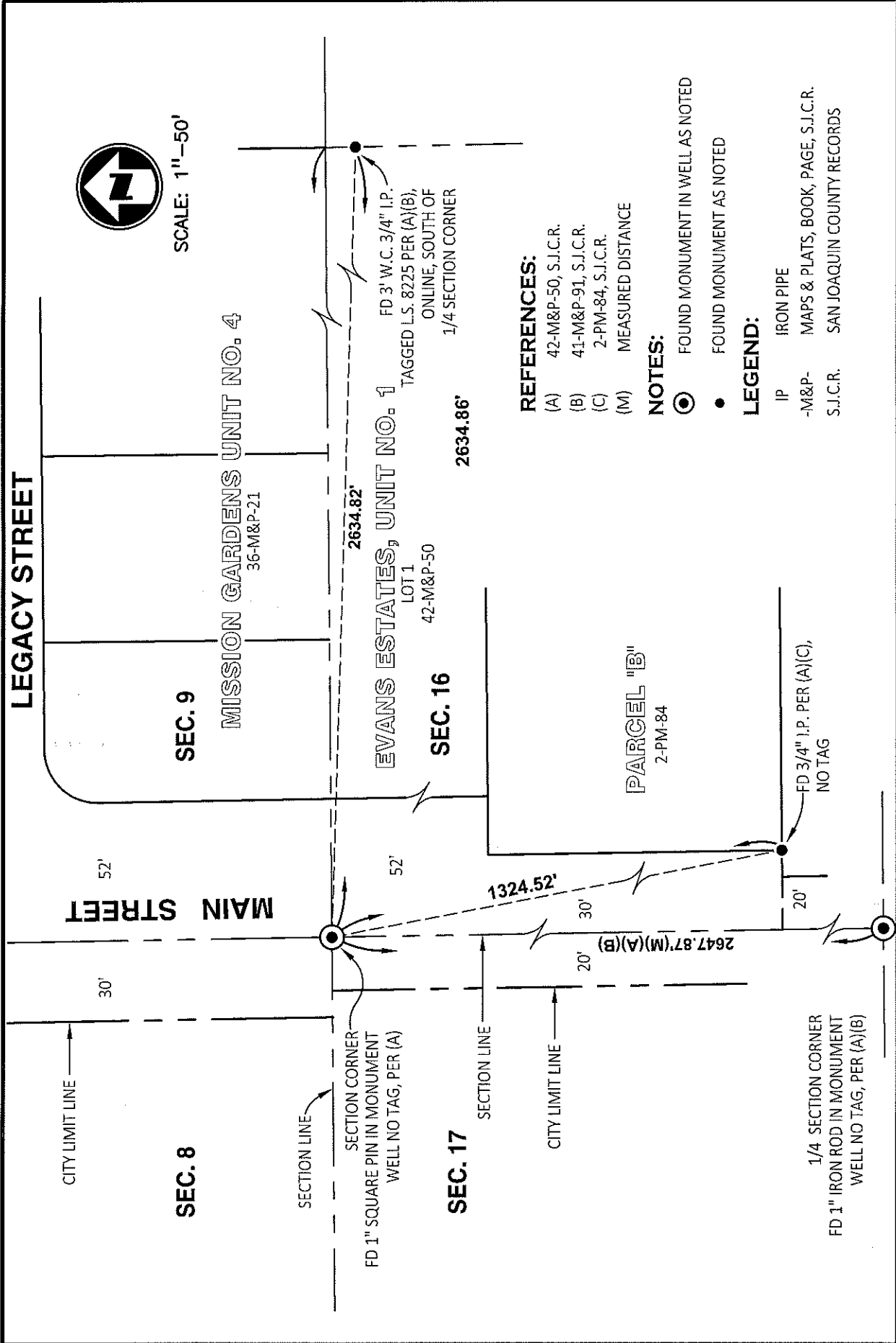
This Corner Record was received August 25, 2016 and examined  
 and filed September 29, 2016.

Signed Warren D. Smith P.L.S. or R.C.E. No.: 4842

Title County Surveyor

County Surveyor's Comment \_\_\_\_\_





SCALE: 1"=50'

**REFERENCES:**

- (A) 42-M&P-50, S.J.C.R.
- (B) 41-M&P-91, S.J.C.R.
- (C) 2-PM-84, S.J.C.R.
- (M) MEASURED DISTANCE

**NOTES:**

- FOUND MONUMENT IN WELL AS NOTED
- FOUND MONUMENT AS NOTED

**LEGEND:**

- IP IRON PIPE
- M&P- MAPS & PLATS, BOOK, PAGE, S.J.C.R.
- S.J.C.R. SAN JOAQUIN COUNTY RECORDS