

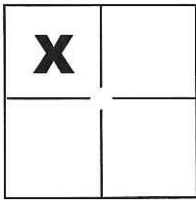
CORNER RECORD

Document Number CR-16-390

City of _____

County of San Joaquin, California

Brief Legal Description Parcel "1" per R.S. 14-100, S.J.C.R.



CORNER TYPE

Government Corner Control
 Meander Property
 Rancho Other

COORDINATES(Optional)

N. _____
 E. _____
 Zone _____ NAD27 NAD83
 NAD83 Epoch _____
 Elev. _____
 Vert. Datum: NGVD29 NADV88
 Meas. Units: Metric Imperial

Sec. 22, T.1S., R.7E.,
M.D.B. & M.

Date of Survey August 3, 2016

Corner - Left as found Found and tagged Established Reestablished Rebuilt

Identification and type of corner found: Evidence used to identify or procedure used to establish or reestablish the corner:
See Sheet 2

A description of the physical condition of the monument as found and as set or reset: _____
See Sheet 2

SURVEYOR'S STATEMENT

This Corner Record was prepared by me or under my direction in conformance with
 the Land Surveyor's Act on August 4, 2016.

Signed Michael L. Quarantoni P.L.S. or R.C.E. No.: L.S. 4450



COUNTY SURVEYOR'S STATEMENT

This Corner Record was received September 9, 2016 and examined
 and filed September 15, 2016.

Signed Warren D. Smith P.L.S. or R.C.E. No.: 4842

Title County Surveyor

County Surveyor's Comment _____

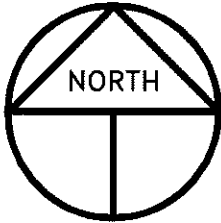


R.S. 27-193
P.M. 25-46

FD. 3/4" IRON PIPE INSIDE OF 2" IRON PIPE PER
(A)(B)(C), SET WASHER STAMPED LS 4450 ON TOP
OF 2" IRON PIPE

REFERENCE

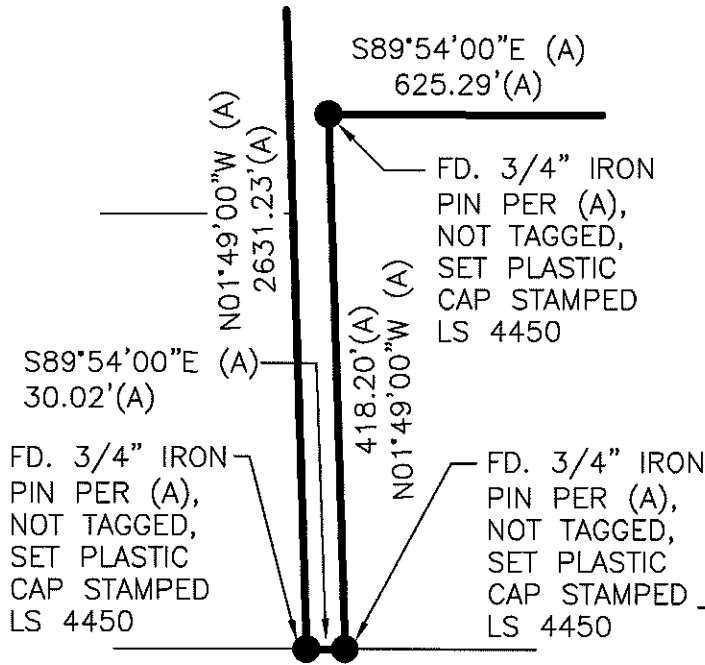
- (A) R.S. 14-100, S.J.C.R.
- (B) R.S. 6-308, S.J.C.R.
- (C) P.M. 25-46, S.J.C.R.



SCALE: 1" = 300'
2016-150

LEGEND

- INDICATES FOUND MONUMENT AS NOTED
- INDICATES FOUND 3/4" IRON PIN PER (A), BENT, REPLACED WITH 3/4" X 30" IRON PIPE W/PLASTIC CAP STAMPED LS 4450
- R.S. INDICATES RECORD OF SURVEY, BOOK AND PAGE, S.J.C.R.
- P.M. INDICATES PARCEL MAP, BOOK AND PAGE, S.J.C.R.
- S.J.C.R. INDICATES SAN JOAQUIN COUNTY RECORDS
- DOC. NO. INDICATES DOCUMENT NUMBER, S.J.C.R.



**NORTHLAND ROAD
DETAIL "A"**

NOT TO SCALE

