

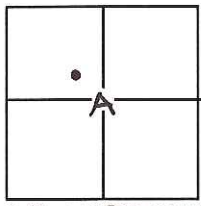
# CORNER RECORD

Document Number CR-16-383

City of Stockton

County of San Joaquin, California

Brief Legal Description Projection of Northwest lot line of Lot 100, 21 M.P. 24 at the NE end thereof.



C.M. WEBER GRANT

### CORNER TYPE

Government Corner	<input type="checkbox"/>	Control	<input type="checkbox"/>
Meander	<input type="checkbox"/>	Property	<input checked="" type="checkbox"/>
Rancho	<input type="checkbox"/>	Other	<input type="checkbox"/>

Date of Survey August 9, 2016

### COORDINATES(Optional)

N. \_\_\_\_\_  
 E. \_\_\_\_\_  
 Zone \_\_\_\_\_ NAD27  NAD83   
 NAD83 Epoch \_\_\_\_\_  
 Elev. \_\_\_\_\_  
 Vert. Datum: NGVD29  NADV88   
 Meas. Units: Metric  Imperial

Corner - Left as found  Found and tagged  Established  Reestablished  Rebuilt

Identification and type of corner found: Evidence used to identify or procedure used to establish or reestablish the corner:  
The Northwest lot line of Lot 100 was established based on found centerline monuments and record data per 21 M.P. 24.

A description of the physical condition of the monument as found and as set or reset: Set 1" brass disc stamped "LS 6947" in concrete sidewalk at three foot projection of lot line.

### SURVEYOR'S STATEMENT

This Corner Record was prepared by me or under my direction in conformance with the Land Surveyor's Act on August 9, 2016.

Signed [Signature] P.L.S. or R.C.E. No.: L.S. 6947



### COUNTY SURVEYOR'S STATEMENT

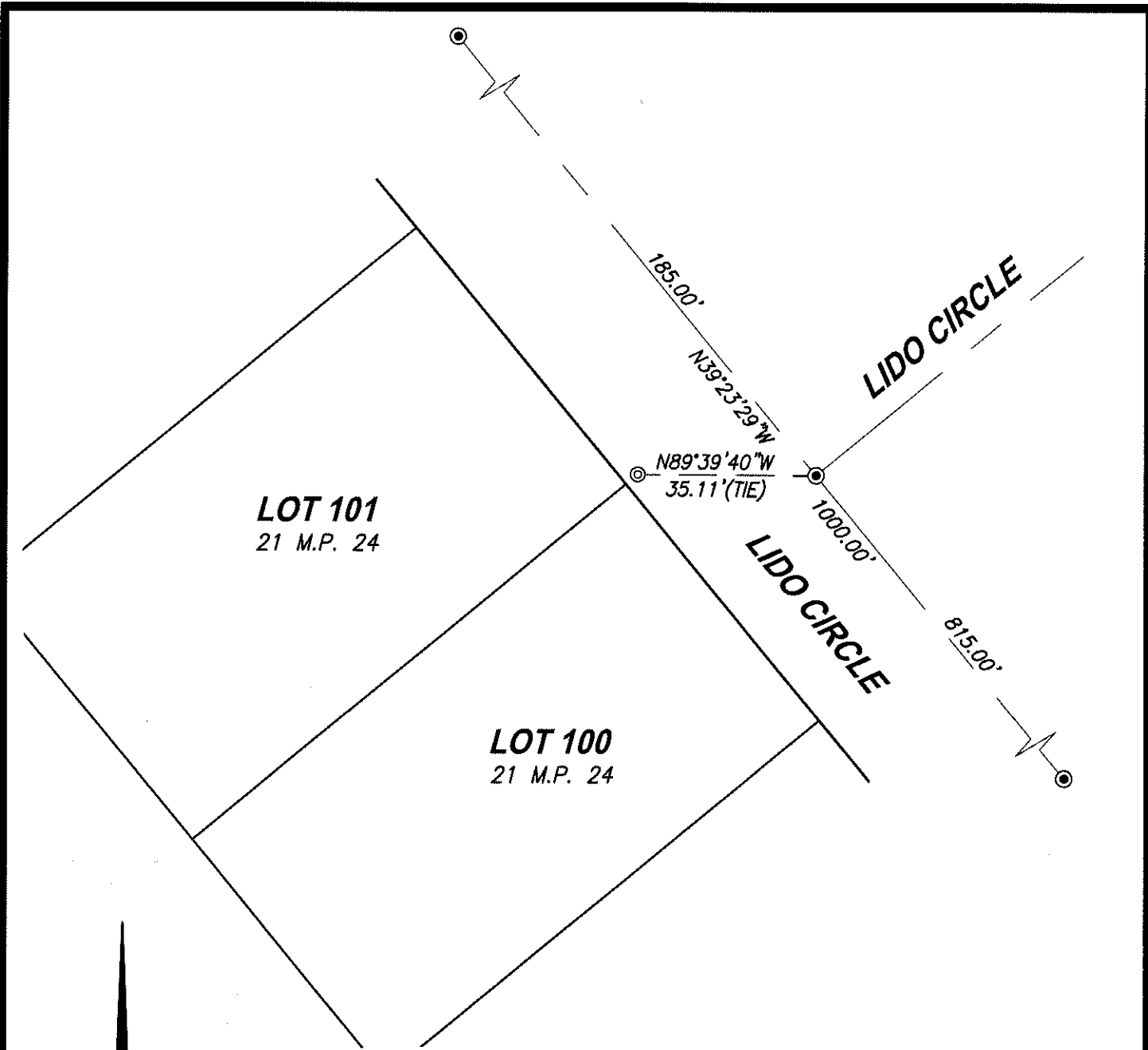
This Corner Record was received August 11, 2016 and examined and filed August 22, 2016.

Signed [Signature] P.L.S. or R.C.E. No.: 4842

Title County Surveyor

County Surveyor's Comment \_\_\_\_\_





**LEGEND:**

SCALE



1" = 30'

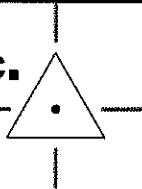
- + -- REPLACED CUT CROSS WITH 1" BRASS DISC "LS 6947" IN SIDEWALK AT 3.00' PROJECTION OF LOT LINE BASED ON FOUND CENTERLINE MONUMENTS AND RECORD DATA.
- ⊙ -- FOUND 3/4" REBAR IN MONUMENT WELL PER 21 M.P. 24.
- M.P. -- MAPS & PLATS

NOTE: NO ATTEMPT WAS MADE TO VERIFY MONUMENT

**CenterPoint Engineering, Inc.**

Civil Engineering & Land Surveying

1217 Pleasant Grove Blvd, Suite 130 • Roseville, CA • 95678  
Phone: 916-773-4006 Fax: 916-773-4498



DRAWN BY: BB

CHECKED BY: MH

SHEET: 2 OF 2

SCALE: 1" = 30'

DATE: 8-9-2016

FILE: K:\166401\SURVEY\166401-CL.DWG