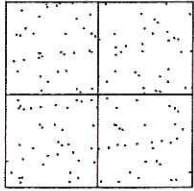


CORNER RECORD

Document Number CR-16-373
County of San Joaquin, California

City of _____
Brief Legal Description SIXTH STREET @ ASH STREET
(WITHIN SECTION 14 OF THE C.M. WEBER GRANT)



CORNER TYPE

Government Corner Control
Meander Property
Rancho Other
Date of Survey July 21, 2016

COORDINATES (Optional)

N. _____
E. _____
Zone _____ NAD27 NAD83
NAD83 Epoch _____
Elev. _____
Vert. Datum: NGVD29 NAVD88
Meas. Units: Metric Imperial

Corner - Left as found Found and tagged Established Reestablished Rebuilt

Identification and type of corner found; Evidence used to identify or procedure used to establish or reestablish the corner:
SEE SKETCH ON BACKSIDE.

A description of the physical condition of the monument as found and as set or reset:
SEE SKETCH ON BACKSIDE.

SURVEYOR'S STATEMENT

This Corner Record was prepared by me or under my direction in conformance with the Land Surveyors' Act on July 27, 2016.

Signed James E. Hart P.L.S. Number 8657

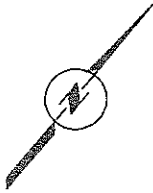
COUNTY SURVEYOR'S STATEMENT

This Corner Record was received August 2, 2016 and examined and filed August 22, 2016.

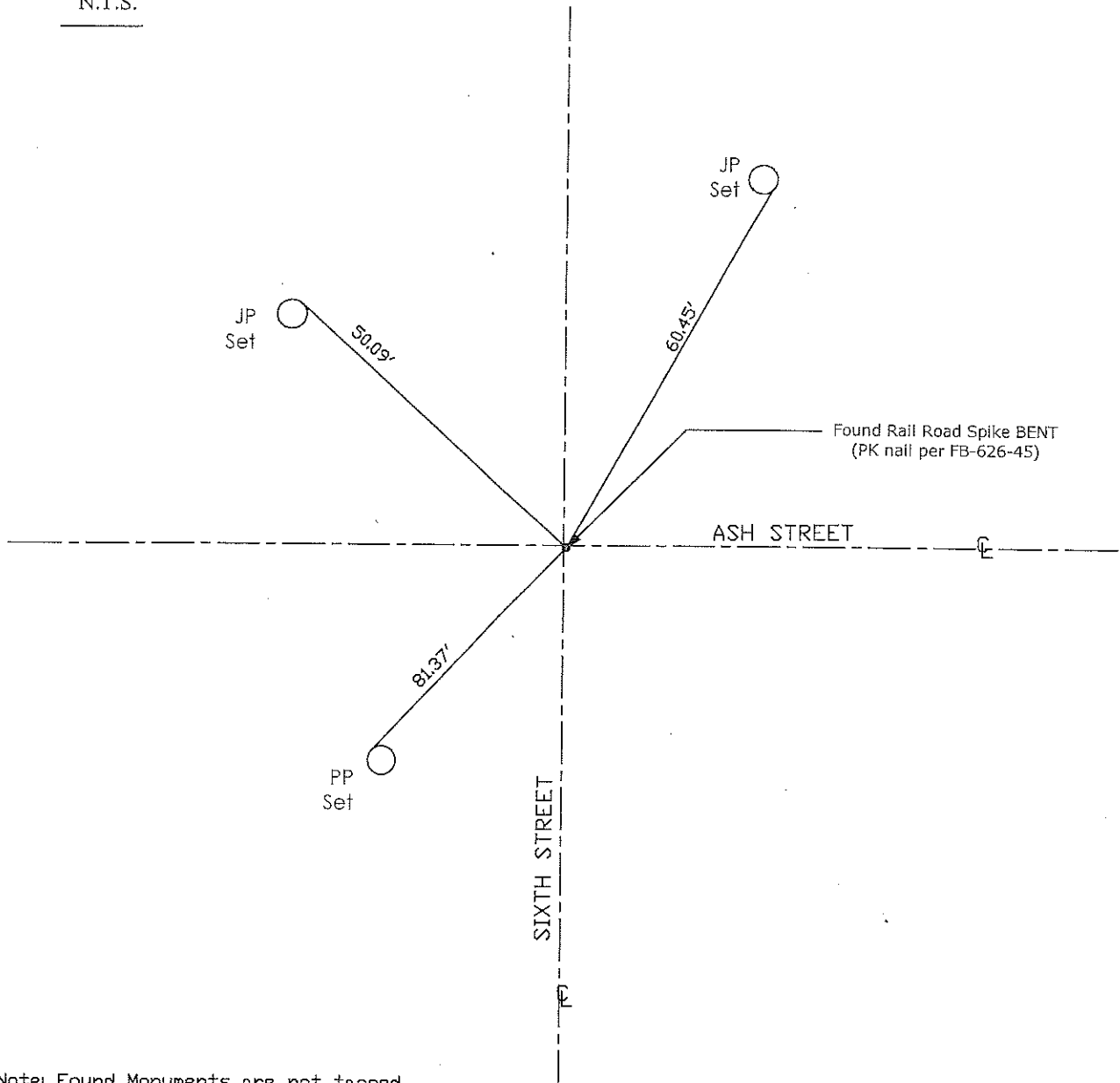
Signed Warren D. Smith P.L.S. No. 4842
Title County Surveyor

County Surveyor's Comment _____





N.T.S.



Note: Found Monuments are not tagged unless otherwise noted.

"No Attempt Was Made to Verify the Monument(s)"

- FP=Fence Post
- GP=Guy Post
- JP=Joint Pole
- LP=Lamp Pole
- PP=Power Pole
- RS=Record of Survey
- SP=Service Pole
- TP=Telephone Pole
- SDI=Storm Drain Inlet
- S.F.N=Searched Found Nothing
- N.T.S.=Not To Scale
- Set=Conc. Nail with Brass Washer Stamped
"S.J. Co.", unless otherwise noted