

CORNER RECORD

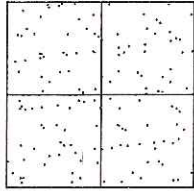
Document Number CR-16-372

City of \_\_\_\_\_

County of San Joaquin, California

Brief Legal Description ENDOW ROAD @ HOWARD ROAD

(WITHIN SECTION 1 OF THE C.M. WEBER GRANT)



CORNER TYPE

- Government Corner  Control
- Meander  Property
- Rancho  Other

Date of Survey July 18, 2016

COORDINATES (Optional)

N. \_\_\_\_\_  
 E. \_\_\_\_\_  
 Zone \_\_\_\_\_ NAD27  NAD83   
 NAD83 Epoch \_\_\_\_\_  
 Elev. \_\_\_\_\_  
 Vert. Datum: NGVD29  NAVD88   
 Meas. Units: Metric  Imperial

Corner - Left as found  Found and tagged  Established  Reestablished  Rebuilt

Identification and type of corner found: Evidence used to identify or procedure used to establish or reestablish the corner:  
SEE SKETCH ON BACKSIDE.

A description of the physical condition of the monument as found and as set or reset:  
SEE SKETCH ON BACKSIDE.

SURVEYOR'S STATEMENT

This Corner Record was prepared by me or under my direction in conformance with the Land Surveyors' Act on July 27, 2016.

Signed James E. Hart P.L.S. Number 8657

COUNTY SURVEYOR'S STATEMENT

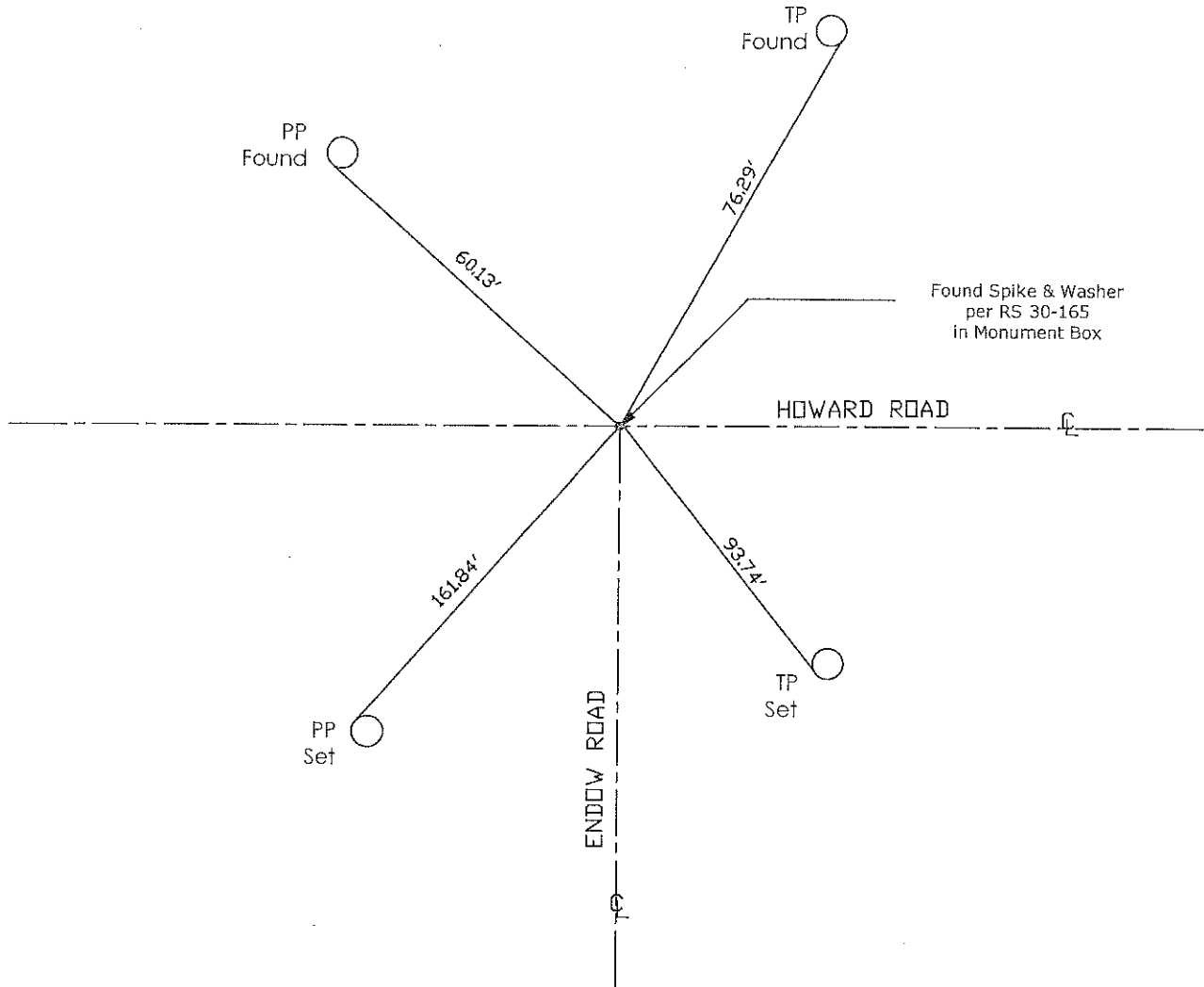
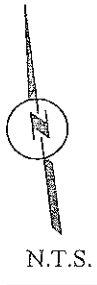
This Corner Record was received August 2, 2016 and examined and filed August 22, 2016.

Signed Warren D. Smith P.L.S. No. 4842

Title County Surveyor

County Surveyor's Comment \_\_\_\_\_





Note: Found Monuments are not tagged unless otherwise noted.

"No Attempt Was Made to Verify the Monument(s)"

- FP=Fence Post
- GP=Guy Post
- JP=Joint Pole
- LP=Lamp Pole
- PP=Power Pole
- RS=Record of Survey
- SP=Service Pole
- TP=Telephone Pole
- SDI=Storm Drain Inlet
- S.F.N=Searched Found Nothing
- N.T.S.=Not To Scale
- Set=Conc. Nail with Brass Washer Stamped "S.J. Co.", unless otherwise noted