

# CORNER RECORD

Document Number CR-16-352  
 County of San Joaquin, California

City of \_\_\_\_\_  
 Brief Legal Description A.P.N. 087-052-12

61	71
62	72

C.M. WEBER GRANT

### CORNER TYPE

Government Corner  Control   
 Meander  Property   
 Rancho  Other

Date of Survey May 17, 2016

### COORDINATES(Optional)

N. \_\_\_\_\_  
 E. \_\_\_\_\_  
 Zone \_\_\_\_\_ NAD27  NAD83   
 NAD83 Epoch \_\_\_\_\_  
 Elev. \_\_\_\_\_  
 Vert. Datum: NGVD29  NADV88   
 Meas. Units: Metric  Imperial

Corner - Left as found  Found and tagged  Established  Reestablished  Rebuilt

Identification and type of corner found: Evidence used to identify or procedure used to establish or reestablish the corner:  
See Sketch

A description of the physical condition of the monument as found and as set or reset: See Sketch

### SURVEYOR'S STATEMENT

This Corner Record was prepared by me or under my direction in conformance with  
 the Land Surveyor's Act on August 11, 2016.

Signed Joe Murphy (P.L.S.) or R.C.E. No.: 7269



### COUNTY SURVEYOR'S STATEMENT

This Corner Record was received August 11, 2016 and examined  
 and filed August 12, 2016.

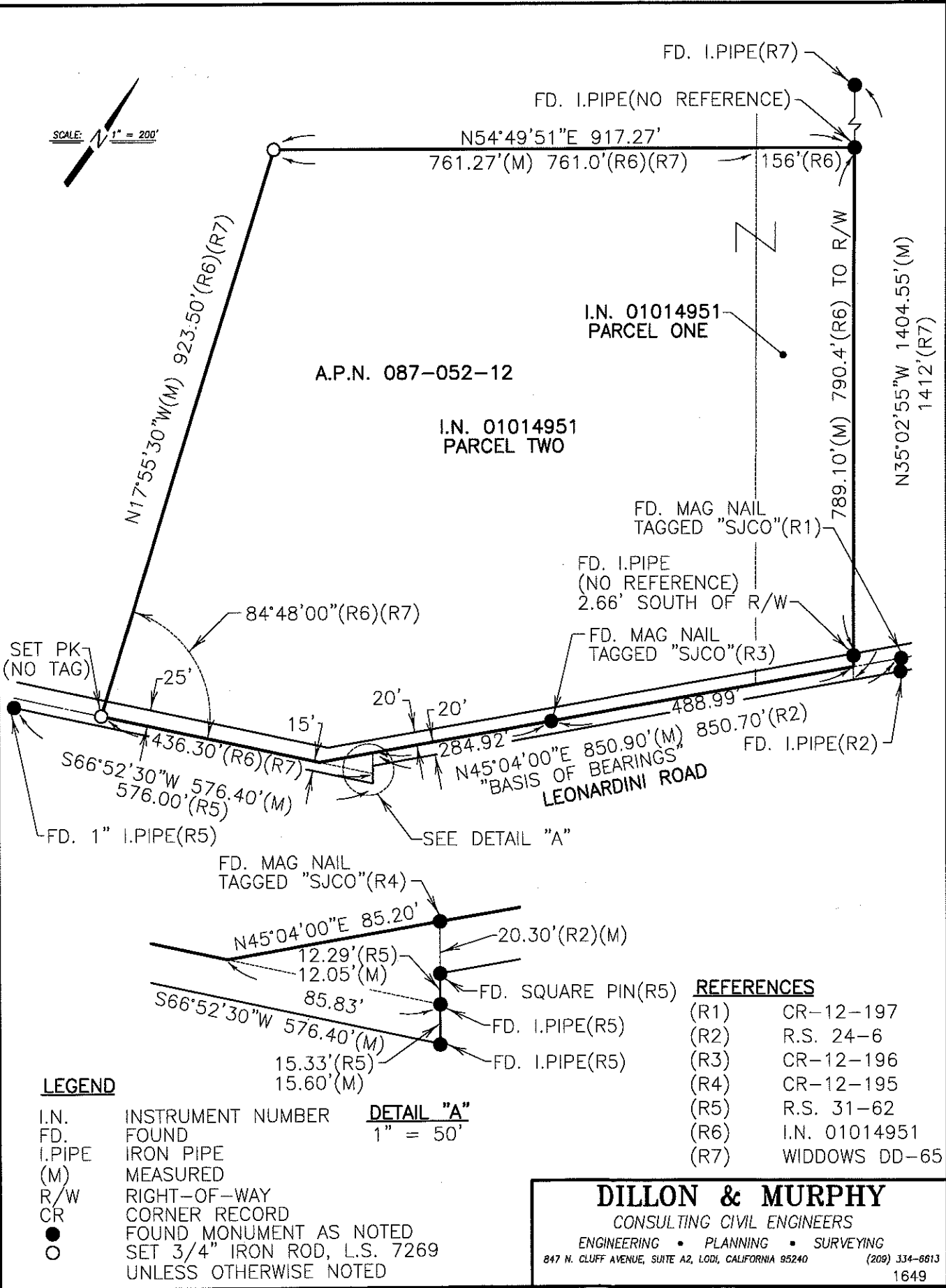
Signed Warren D. Smith P.L.S. or R.C.E. No.: 4842

Title County Surveyor

County Surveyor's Comment \_\_\_\_\_



SCALE: 1" = 200'



A.P.N. 087-052-12

I.N. 01014951  
PARCEL TWO

I.N. 01014951  
PARCEL ONE

FD. MAG NAIL  
TAGGED "SJCO"(R1)

FD. I.P.I.PE  
(NO REFERENCE)  
2.66' SOUTH OF R/W

FD. MAG NAIL  
TAGGED "SJCO"(R3)

FD. I.P.I.PE(R2)

"BASIS OF BEARINGS"  
LEONARDINI ROAD

SEE DETAIL "A"

FD. MAG NAIL  
TAGGED "SJCO"(R4)

20.30'(R2)(M)

FD. SQUARE PIN(R5)

FD. I.P.I.PE(R5)

FD. I.P.I.PE(R5)

**REFERENCES**

- (R1) CR-12-197
- (R2) R.S. 24-6
- (R3) CR-12-196
- (R4) CR-12-195
- (R5) R.S. 31-62
- (R6) I.N. 01014951
- (R7) WIDDOWS DD-65

**LEGEND**

- I.N. INSTRUMENT NUMBER
- FD. FOUND
- I.P.I.PE IRON PIPE
- (M) MEASURED
- R/W RIGHT-OF-WAY
- CR CORNER RECORD
- FOUND MONUMENT AS NOTED
- SET 3/4" IRON ROD, L.S. 7269 UNLESS OTHERWISE NOTED

**DETAIL "A"**  
1" = 50'

**DILLON & MURPHY**

CONSULTING CIVIL ENGINEERS

ENGINEERING • PLANNING • SURVEYING

847 N. CLUFF AVENUE, SUITE A2, LODI, CALIFORNIA 95240

(209) 334-6613

1649