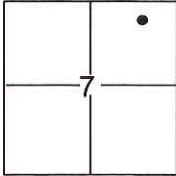


# CORNER RECORD

Document Number CR-16-351  
County of San Joaquin, California

City of \_\_\_\_\_  
Brief Legal Description A.P.N. 085-110-80



T.2N., R.7E., M.D.B.M.

### CORNER TYPE

Government Corner  Control   
Meander  Property   
Rancho  Other

Date of Survey June 24, 2016

### COORDINATES(Optional)

N. \_\_\_\_\_  
E. \_\_\_\_\_  
Zone \_\_\_\_\_ NAD27  NAD83   
NAD83 Epoch \_\_\_\_\_  
Elev. \_\_\_\_\_  
Vert. Datum: NGVD29  NADV88   
Meas. Units: Metric  Imperial

Corner - Left as found  Found and tagged  Established  Reestablished  Rebuilt

Identification and type of corner found: Evidence used to identify or procedure used to establish or reestablish the corner:  
See sketch.

A description of the physical condition of the monument as found and as set or reset: See sketch.

### SURVEYOR'S STATEMENT

This Corner Record was prepared by me or under my direction in conformance with  
the Land Surveyor's Act on August 11, 2016.

Signed [Signature] P.L.S. or R.C.E. No.: 7269



### COUNTY SURVEYOR'S STATEMENT

This Corner Record was received August 11, 2016 and examined  
and filed August 12, 2016.

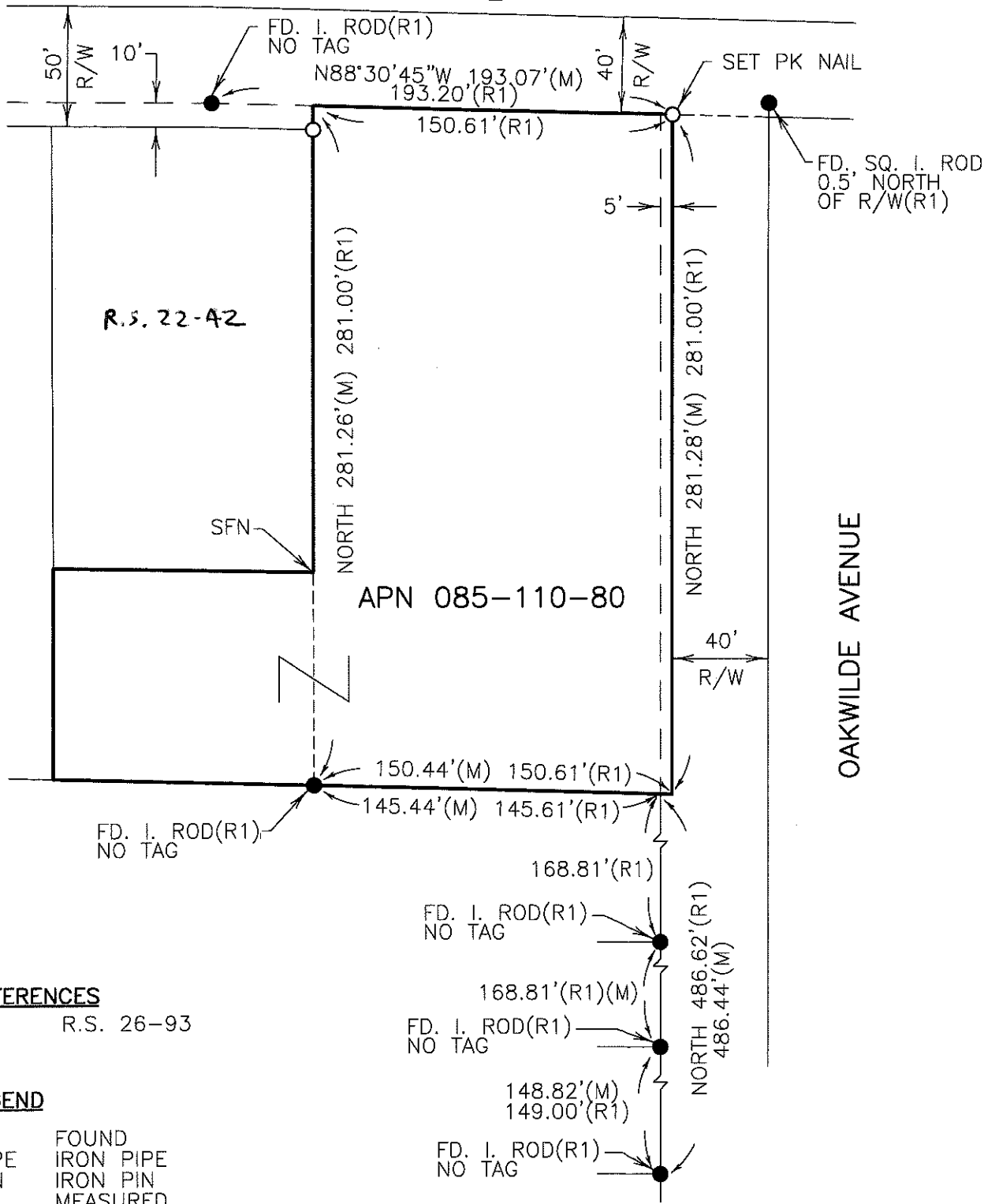
Signed [Signature] P.L.S. or R.C.E. No.: 4842

Title County Surveyor

County Surveyor's Comment \_\_\_\_\_



ASHLEY LANE



R.S. 22-42

APN 085-110-80

OAKWILDE AVENUE

**REFERENCES**

(R1) R.S. 26-93

**LEGEND**

- FD. I.PIN FOUND IRON PIPE
- FOUND IRON PIN
- (M) MEASURED
- (P) PRORATED
- CR CORNER RECORD
- FOUND MONUMENT AS NOTED
- SET 3/4" IRON ROD, L.S. 7269 UNLESS OTHERWISE NOTED

**DILLON & MURPHY**  
 CONSULTING CIVIL ENGINEERS  
 ENGINEERING • PLANNING • SURVEYING  
 847 N. CLUFF AVENUE, SUITE A2, LODI, CALIFORNIA 95240 (209) 334-6613  
 1662