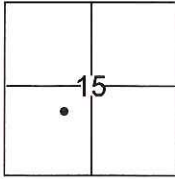


CORNER RECORD

Document Number CR-16-350
County of San Joaquin, California

City of _____
Brief Legal Description A.P.N. 091-210-60



T.2N., R.8E., M.D.B.M.

CORNER TYPE

Government Corner Control
Meander Property
Rancho Other

Date of Survey June 22, 2016

COORDINATES(Optional)

N. _____
E. _____
Zone _____ NAD27 NAD83
NAD83 Epoch _____
Elev. _____
Vert. Datum: NGVD29 NADV88
Meas. Units: Metric Imperial

Corner - Left as found Found and tagged Established Reestablished Rebuilt

Identification and type of corner found: Evidence used to identify or procedure used to establish or reestablish the corner:

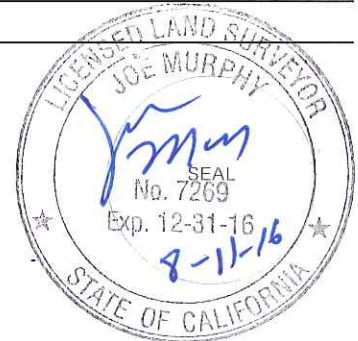
See Sketch

A description of the physical condition of the monument as found and as set or reset: See Sketch

SURVEYOR'S STATEMENT

This Corner Record was prepared by me or under my direction in conformance with the Land Surveyor's Act on August 11, 2016.

Signed Joe Murphy P.L.S. or R.C.E. No.: 7269



COUNTY SURVEYOR'S STATEMENT

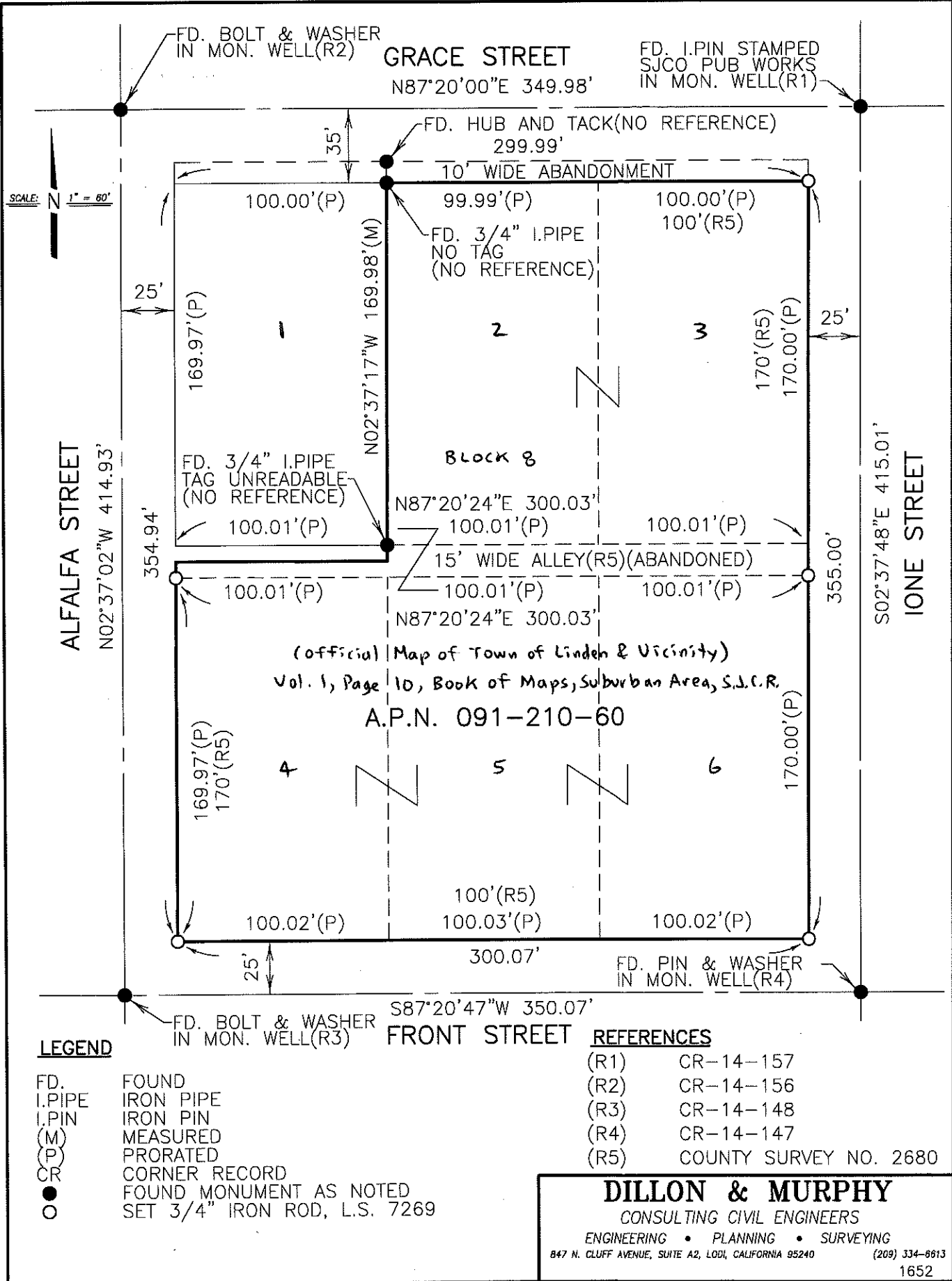
This Corner Record was received August 11, 2016 and examined and filed August 12, 2016.

Signed Warren D. Smith P.L.S. or R.C.E. No.: 4842

Title County Surveyor

County Surveyor's Comment _____





LEGEND

- FD. FOUND
- I.P.I.P.E. IRON PIPE
- I.P.I.N. IRON PIN
- (M) MEASURED
- (P) PRORATED
- CR CORNER RECORD
- FOUND MONUMENT AS NOTED
- SET 3/4" IRON ROD, L.S. 7269

REFERENCES

- (R1) CR-14-157
- (R2) CR-14-156
- (R3) CR-14-148
- (R4) CR-14-147
- (R5) COUNTY SURVEY NO. 2680

DILLON & MURPHY
 CONSULTING CIVIL ENGINEERS
 ENGINEERING • PLANNING • SURVEYING
 847 N. CLUFF AVENUE, SUITE A2, LODI, CALIFORNIA 95240 (209) 334-8613
 1652