

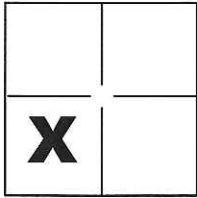
# CORNER RECORD

Document Number CR-16-349

City of Escalon

County of San Joaquin, California

Brief Legal Description Propety line between the 15.04 Ac. Parcel and the 5.02 Ac. Parcel as shown on R.S. 6-101, S.J.C.R.



### CORNER TYPE

Government Corner  Control   
Meander  Property   
Rancho  Other

### COORDINATES(Optional)

N. \_\_\_\_\_  
E. \_\_\_\_\_  
Zone \_\_\_\_\_ NAD27  NAD83   
NAD83 Epoch \_\_\_\_\_  
Elev. \_\_\_\_\_  
Vert. Datum: NGVD29  NADV88   
Meas. Units: Metric  Imperial

Sec. 32 T.1S., R.9E.,  
M.D.B. & M.

Date of Survey July 11, 2016

Corner - Left as found  Found and tagged  Established  Reestablished  Rebuilt

Identification and type of corner found: Evidence used to identify or procedure used to establish or reestablish the corner:  
See Sheet 2

A description of the physical condition of the monument as found and as set or reset: \_\_\_\_\_  
See Sheet 2

### SURVEYOR'S STATEMENT

This Corner Record was prepared by me or under my direction in conformance with the Land Surveyor's Act on July 14, 2016.

Signed Michael L. Quantz P.L.S. or R.C.E. No.: L.S. 4450



### COUNTY SURVEYOR'S STATEMENT

This Corner Record was received July 18, 2016 and examined and filed August 12, 2016.

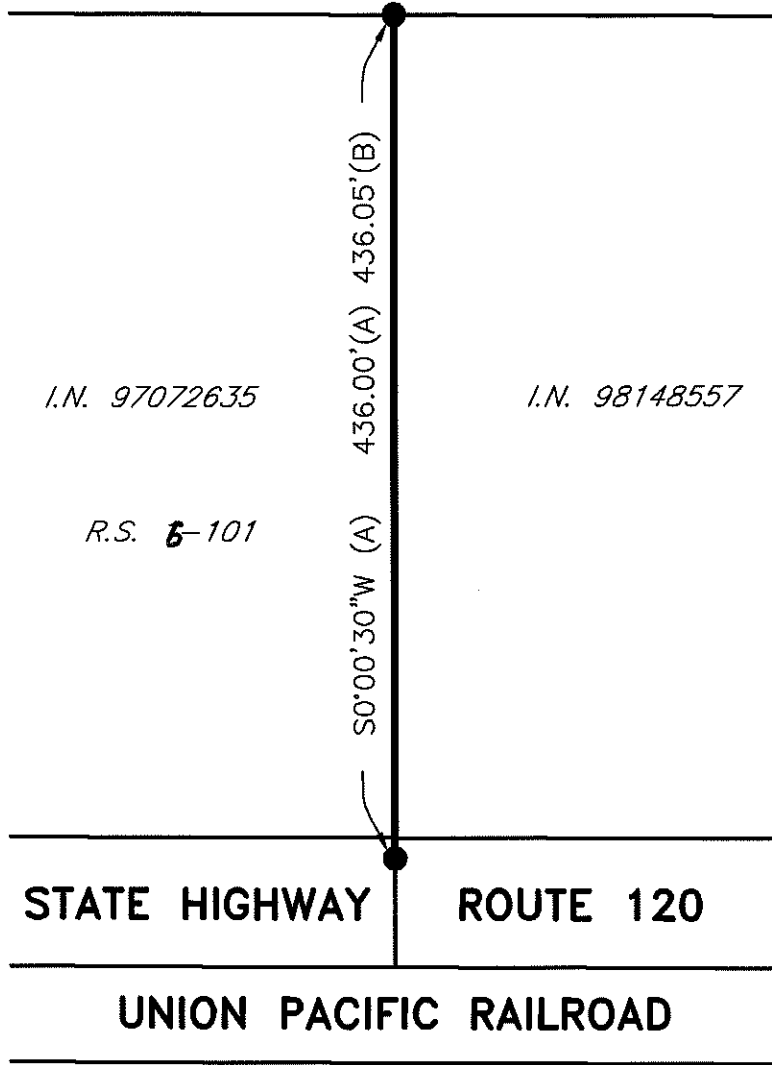
Signed Warren D. Smith P.L.S. or R.C.E. No.: 4842

Title County Surveyor

County Surveyor's Comment \_\_\_\_\_



R.S. 37-58

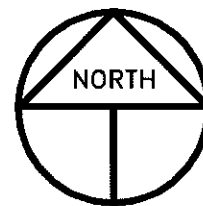


## LEGEND

- INDICATES FOUND 3/4" SQUARE IRON BAR PER (A), NOT TAGGED, SET PLASTIC CAP STAMPED LS 4450
- FD. INDICATES FOUND ON THIS SURVEY
- R.S. INDICATES RECORD OF SURVEY, BOOK AND PAGE, S.J.C.R.
- S.J.C.R. INDICATES SAN JOAQUIN COUNTY RECORDS

## REFERENCES

- (A) R.S. 6-101, S.J.C.R.
- (B) R.S. 37-58, S.J.C.R.



SCALE: 1" = 100'  
2016-151