

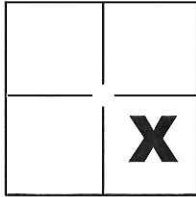
CORNER RECORD

Document Number CR-16-348

City of _____

County of San Joaquin, California

Brief Legal Description Northwest and Southeast corner of Parcel 7 Per R.S. 7-282, S.J.C.R.



CORNER TYPE

Government Corner Control
 Meander Property
 Rancho Other

COORDINATES(Optional)

N. _____
 E. _____
 Zone _____ NAD27 NAD83
 NAD83 Epoch _____
 Elev. _____
 Vert. Datum: NGVD29 NADV88
 Meas. Units: Metric Imperial

Sec. 17 T.3S., R.6E.,
M.D.B. & M.

Date of Survey July 11, 2016

Corner - Left as found Found and tagged Established Reestablished Rebuilt

Identification and type of corner found: Evidence used to identify or procedure used to establish or reestablish the corner:

See Sheet 2

A description of the physical condition of the monument as found and as set or reset: _____

See Sheet 2

SURVEYOR'S STATEMENT

This Corner Record was prepared by me or under my direction in conformance with
 the Land Surveyor's Act on July 12, 2016.

Signed Michael L. Quaratori P.L.S. or R.C.E. No.: L.S. 4450



COUNTY SURVEYOR'S STATEMENT

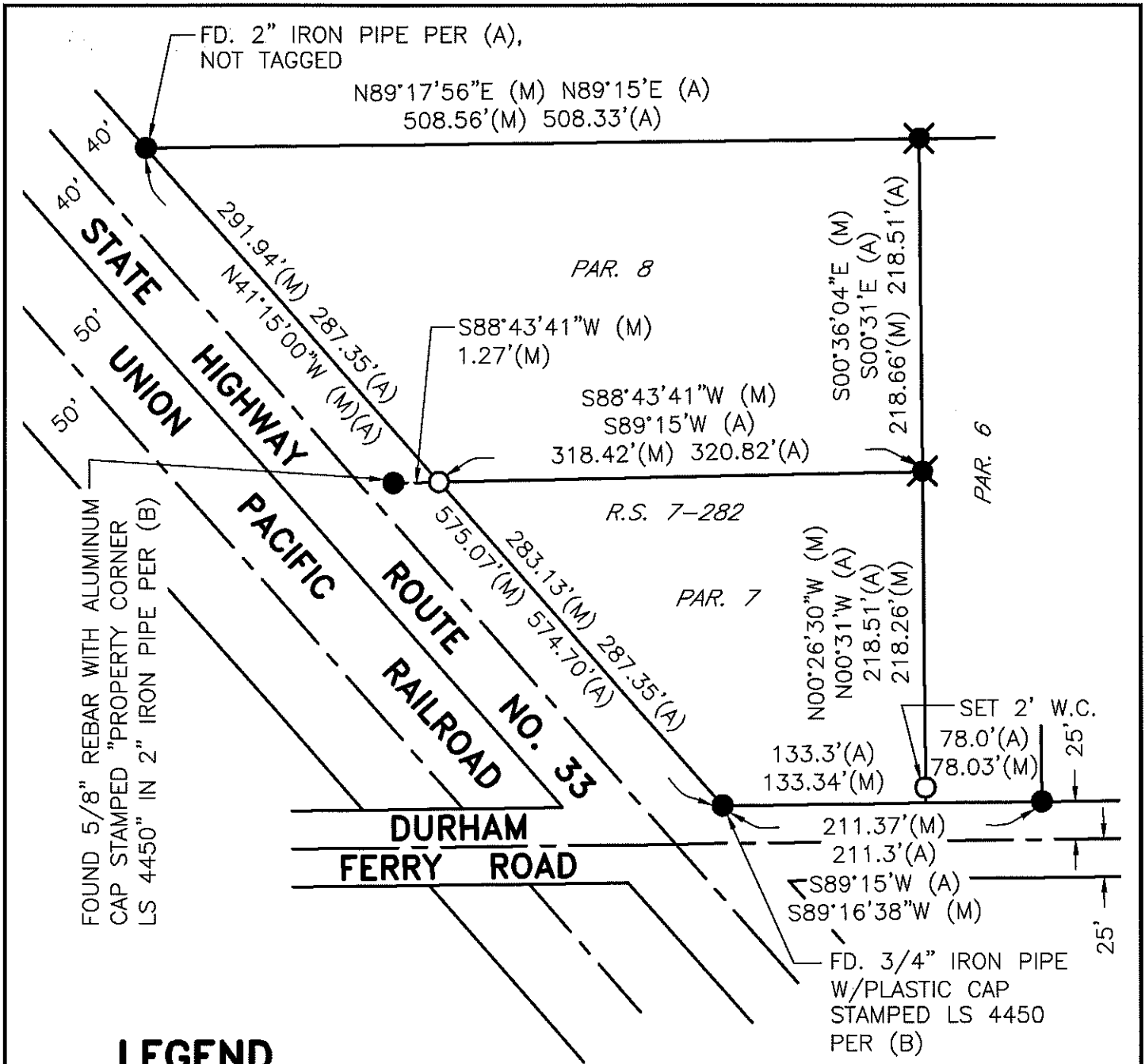
This Corner Record was received July 15, 2016 and examined
 and filed August 12, 2016.

Signed Warren D. Smith P.L.S. or R.C.E. No.: 4842

Title County Surveyor

County Surveyor's Comment _____



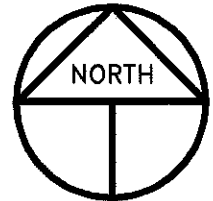


LEGEND

- INDICATES FOUND 2" IRON PIPE W/TAG STAMPED L.E. 1306 PER (A)(B), UNLESS OTHERWISE NOTED
- ✱ INDICATES FOUND 2" IRON PIPE W/BRASS TAG STAMPED LS 4450 ON TOP OF PIPE PER (B)
- INDICATES SET 3/4" X 30" IRON PIPE TAGGED LS 4450, UNLESS OTHERWISE NOTED
- FD. INDICATES FOUND ON THIS SURVEY
- R.S. INDICATES RECORD OF SURVEY, BOOK AND PAGE, S.J.C.R.
- CR INDICATES CORNER RECORD, S.J.C.S.R.
- S.J.C.R. INDICATES SAN JOAQUIN COUNTY RECORDS
- S.J.C.S.R. INDICATES SAN JOAQUIN COUNTY SURVEYORS RECORDS
- PAR. INDICATES PARCEL

REFERENCES

- (A) R.S. 7-282, S.J.C.R.
- (B) CR-16-130, S.J.C.S.R.



SCALE: 1" = 100'
2016-112