

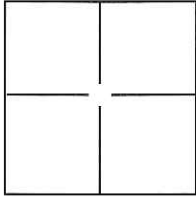
CORNER RECORD

Document Number CR-16-347

City of _____

County of San Joaquin, California

Brief Legal Description Parcel "1" per P.M. 24-150, S.J.C.R.



Rancho el Pescadero

CORNER TYPE

Government Corner Control
 Meander Property
 Rancho Other

Date of Survey June 21, 2016

COORDINATES(Optional)

N. _____
 E. _____
 Zone _____ NAD27 NAD83
 NAD83 Epoch _____
 Elev. _____
 Vert. Datum: NGVD29 NADV88
 Meas. Units: Metric Imperial

Corner - Left as found Found and tagged Established Reestablished Rebuilt

Identification and type of corner found: Evidence used to identify or procedure used to establish or reestablish the corner:

See Sheet 2

A description of the physical condition of the monument as found and as set or reset: _____

See Sheet 2

SURVEYOR'S STATEMENT

This Corner Record was prepared by me or under my direction in conformance with the Land Surveyor's Act on July 28th, 2016.

Signed Michael L. Quartaroli P.L.S. or R.C.E. No.: L.S. 4450



COUNTY SURVEYOR'S STATEMENT

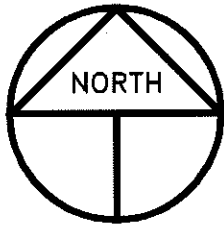
This Corner Record was received July 29, 2016 and examined and filed August 12, 2016.

Signed Warren D. Smith P.L.S. or R.C.E. No.: 4842

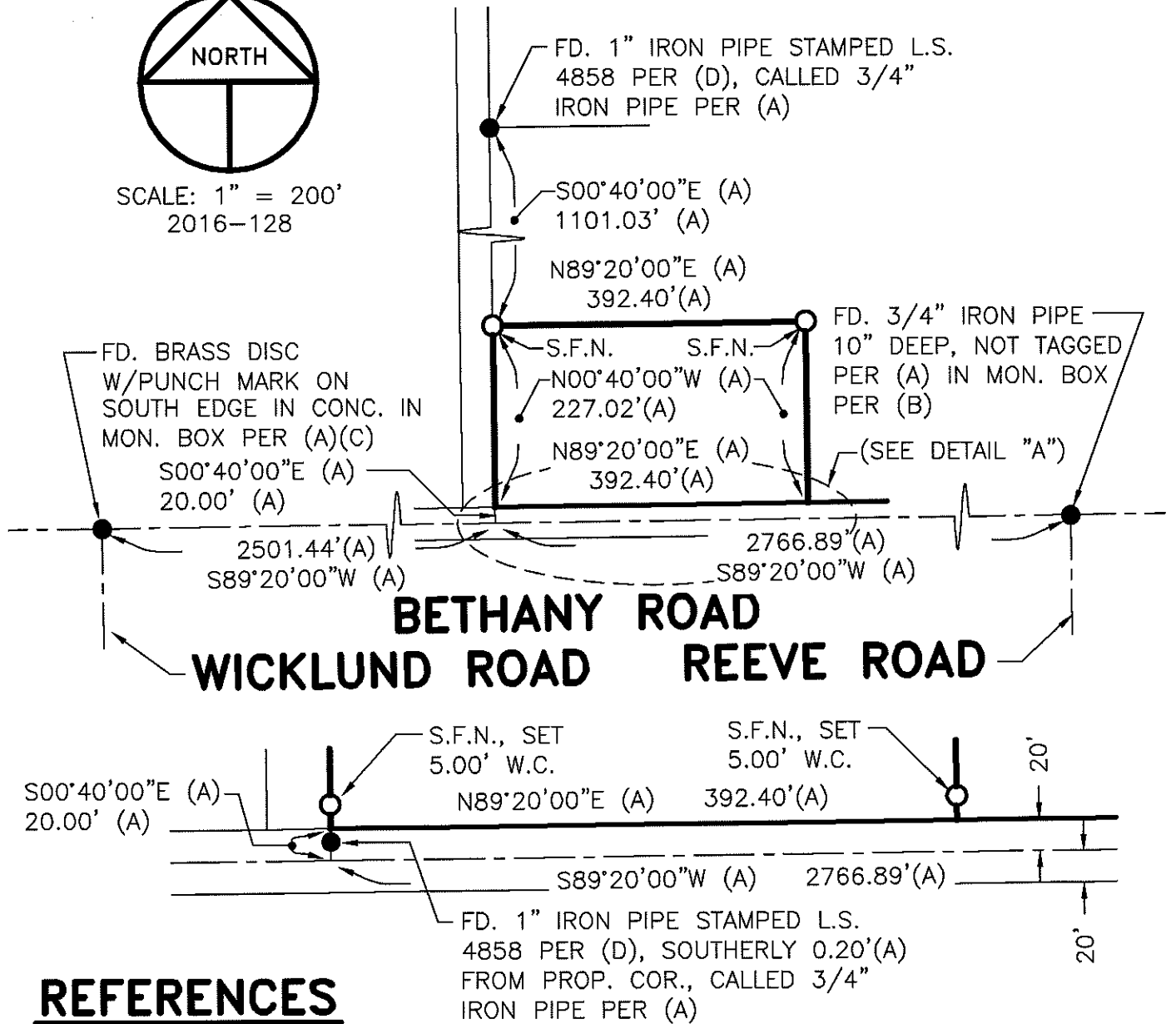
Title County Surveyor

County Surveyor's Comment _____





SCALE: 1" = 200'
2016-128



REFERENCES

- (A) P.M. 24-150, S.J.C.R.
- (B) C.R.-12-142, S.J.C.S.R.
- (C) C.R.-10-82, S.J.C.S.R.
- (D) P.M. 15-196, S.J.C.R.

DETAIL "A"

NOT TO SCALE

LEGEND

- INDICATES FOUND MONUMENT AS NOTED
- INDICATES SET 3/4" x 30" IRON PIPE WITH PLASTIC CAP STAMPED LS 4450
- P.M. INDICATES PARCEL MAP, BOOK AND PAGE, S.J.C.R.
- C.R. INDICATES CORNER RECORD, S.J.C.S.R.
- S.J.C.R. INDICATES SAN JOAQUIN COUNTY RECORDS
- S.J.C.S.R. INDICATES SAN JOAQUIN COUNTY SURVEYORS RECORDS
- S.F.N. INDICATES SEARCHED FOUND NOTHING