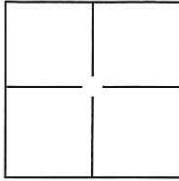


CORNER RECORD

Document Number CR-16-345
 County of SAN JOAQUIN, California

City of _____

Brief Legal Description SECTIONS 18 & 19 T. 3 N. R. 6 E. MDB&M



CORNER TYPE

Government Corner Control
 Meander Property
 Rancho Other

Date of Survey JULY 11, 2016

COORDINATES(Optional)

N. _____
 E. _____
 Zone III NAD27 NAD83
 NAD83 Epoch 2010
 Elev. N/A
 Vert. Datum: NGVD29 NADV88
 Meas. Units: Metric Imperial

Corner - Left as found Found and tagged Established Reestablished Rebuilt

Identification and type of corner found: Evidence used to identify or procedure used to establish or reestablish the corner:
KSN RESET THE MONUMENTS NOTED ON THIS CORNER RECORD UTILIZING GPS SURVEYING METHODS.

THE RECORD OF SURVEY FILED IN BOOK 38 AT PAGE 174, SAN JOAQUIN COUNTY RECORDS,(RS 38-174) WAS FILED IN LIEU OF A PRE CONSTRUCTION CORNER RECORD. THE RECORD COORDINATES AND BASIS OF BEARING SHOWN ON IN RS 38-174 WERE USED AS THE BASIS FOR REESTABLISHING THE LOCATION OF THE MONUMENTS SET ON THIS CORNER RECORD.

A description of the physical condition of the monument as found and as set or reset: MONUMENTS DESTROYED DURING CONSTRUCTION WERE RESET AS NOTED ON THE PLAT SHOWN ON THE BACK OF THIS CORNER RECORD. ALL MONUMENTS SHOWN IN THE MONUMENT PRESERVATION TABLE ON RS 38-174 WERE LOCATED AND CHECKED FOR DISTURBANCE BY CONSTRUCTION. ONLY MONUMENTS FOUND TO BE DISTURBED ARE SHOWN ON THIS CORNER RECORD.

SURVEYOR'S STATEMENT

This Corner Record was prepared by me or under my direction in conformance with

the Land Surveyor's Act on JULY 12, 2016.

Signed [Signature] P.L.S. or R.C.E. No.: 9179



COUNTY SURVEYOR'S STATEMENT

This Corner Record was received July 12, 2016 and examined

and filed August 5, 2016.

Signed [Signature] P.L.S. or R.C.E. No.: 4842

Title County Surveyor

County Surveyor's Comment _____



MONUMENT TABLE

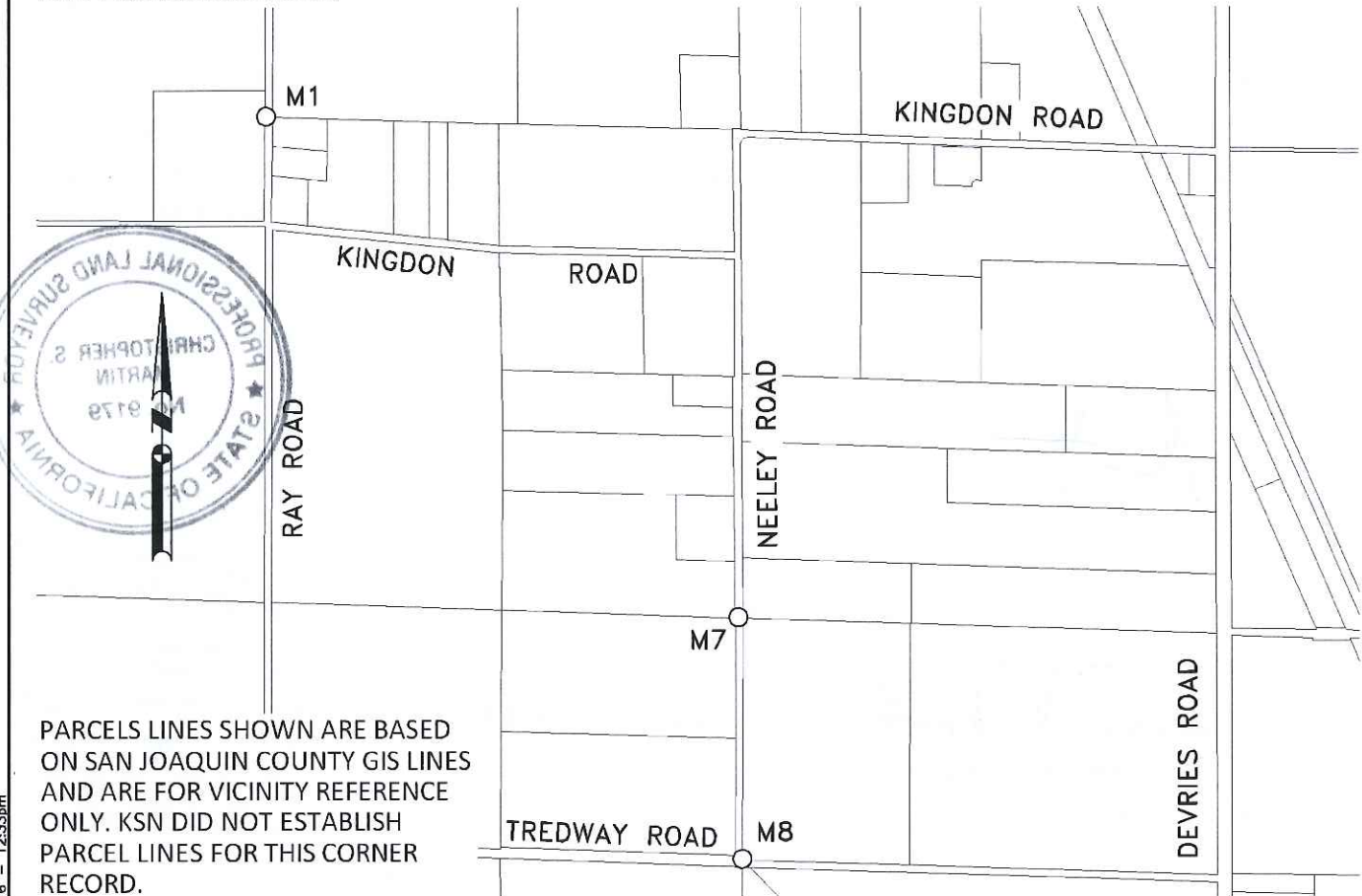
MONUMENT ID	NORTHING	EASTING	DESCRIPTION
M1	2227408.32	6311172.01	SET 3/4" REBAR WITH 2-1/2" ALUMINUM CAP WITH PUNCH STAMPED PLS 9179
M7	2224665.32	6313760.42	SET RAILROAD SPIKE WITH PUNCH STAMPED LS 9179
M8	2223344.79	6313780.91	SET 3/4" REBAR WITH 2-1/2" ALUMINUM CAP WITH PUNCH STAMPED PLS 9179

BASIS OF BEARING

COORDINATES ARE BASED ON THE NORTH AMERICAN DATUM OF 1983 (NAD83) CONVERTED TO THE CALIFORNIA COORDINATE SYSTEM OF 1983, ZONE 3 (CCS83-III), U.S. SURVEY FEET UNITS, AS REFERENCED BY AVAILABLE NGS CONTROL MONUMENTS. ALL COORDINATES ARE GRID WITH A 2010.00 EPOCH DATE ADJUSTMENT. GRID COORDINATES MUST BE MULTIPLIED BY 1.00004658 TO OBTAIN GROUND DISTANCES; THE MERIDIAN CONVERGENCE ANGLE IS -0°32'06".

PURPOSE

THE PURPOSE OF THIS CORNER RECORD IS TO REESTABLISH THE MONUMENTATION DESTROYED DURING CONSTRUCTION OF THE MICHAEL DAVID WASHWATER PIPELINE. THIS CORNER RECORD FULFILLS THE OBLIGATION OF MONUMENT PRESERVATION AS SET FORTH BY SECTION 8771 OF THE CALIFORNIA BUSINESS AND PROFESSIONS CODE.



PARCELS LINES SHOWN ARE BASED ON SAN JOAQUIN COUNTY GIS LINES AND ARE FOR VICINITY REFERENCE ONLY. KSN DID NOT ESTABLISH PARCEL LINES FOR THIS CORNER RECORD.

FILE SPEC: P:\2199_Michael-David_Winery\0010_Process_Washwater_ROW\Prelim_Design\04_Survey\300_Boundary\preliminary\Post_Con_CR\CR1\CR_PLAT.dwg
PLOT DATE: Jul 12, 2016 - 12:33pm

K S N INC.	KJELDSSEN SINNOCK NEUDECK	711 N Perahing Avenue Stockton, CA 95203 209-946-0268
	Civil Engineers and Land Surveyors	1355 Halyard Drive, Suite 100 West Sacramento, CA 95891 916-403-6900 www.keninc.com

**MICHAEL DAVID WINERY
WASHWATER PIPELINE PROJECT**

**POST CONSTRUCTION
CORNER RECORD**

Design	Scale
Drawn CSM	1"=1000'
Check BAS	Original Drawing Scale 0 1/4" 1/2"

Date	JULY 2016
Sheet Number	1 of 1
Project File No.	2199-0010