

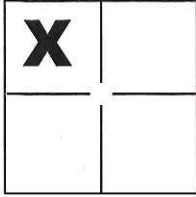
# CORNER RECORD

Document Number CR-16-316

City of \_\_\_\_\_

County of San Joaquin, California

Brief Legal Description Northerly line of Lot 7 per M. & P. 10-113, S.J.C.R.



### CORNER TYPE

Government Corner  Control   
 Meander  Property   
 Rancho  Other

### COORDINATES(Optional)

N. \_\_\_\_\_  
 E. \_\_\_\_\_  
 Zone \_\_\_\_\_ NAD27  NAD83   
 NAD83 Epoch \_\_\_\_\_  
 Elev. \_\_\_\_\_  
 Vert. Datum: NGVD29  NADV88   
 Meas. Units: Metric  Imperial

Sec. 1, T.3S., R.5E.,  
M.D.B. & M.

Date of Survey May 17, 2016

Corner - Left as found  Found and tagged  Established  Reestablished  Rebuilt

Identification and type of corner found: Evidence used to identify or procedure used to establish or reestablish the corner:

See Sheet 2

A description of the physical condition of the monument as found and as set or reset: \_\_\_\_\_

See Sheet 2

### SURVEYOR'S STATEMENT

This Corner Record was prepared by me or under my direction in conformance with the Land Surveyor's Act on June 2, 2016.

Signed Michael L. Quartaroli P.L.S. or R.C.E. No.: L.S. 4450



### COUNTY SURVEYOR'S STATEMENT

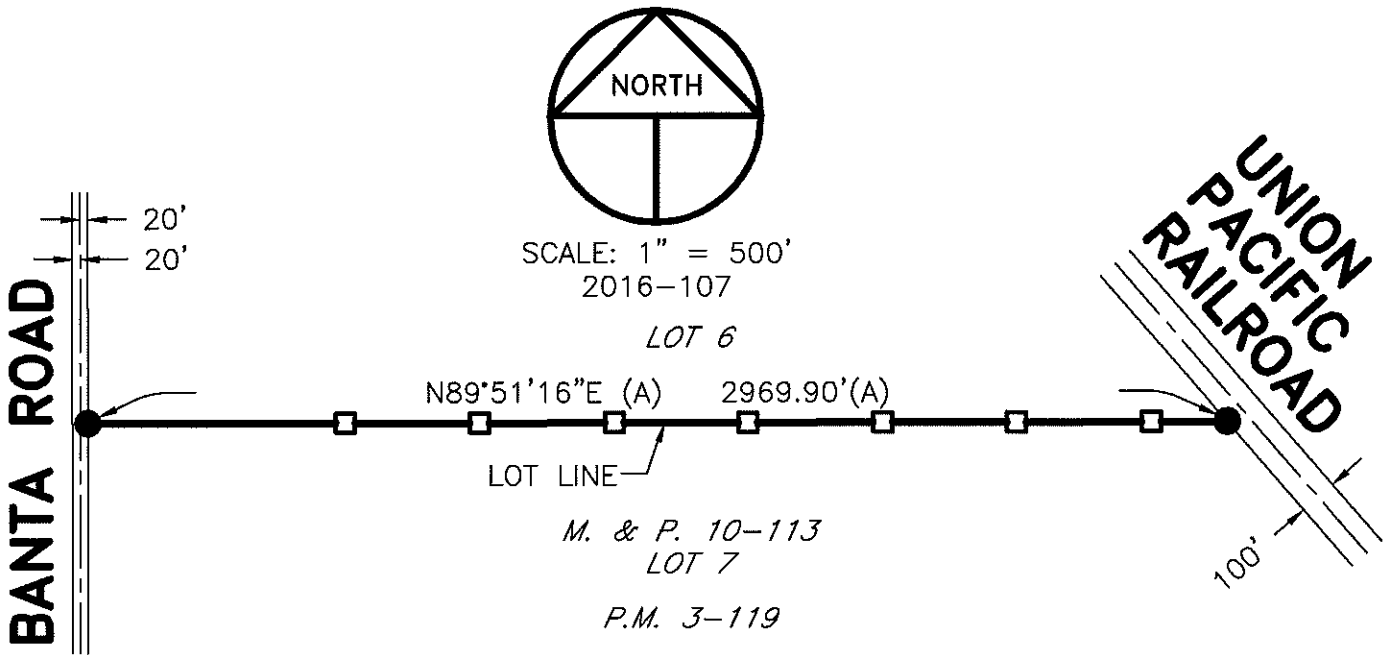
This Corner Record was received June 23, 2016 and examined and filed July 28, 2016.

Signed Warren D. Smith P.L.S. or R.C.E. No.: 4842

Title County Surveyor

County Surveyor's Comment \_\_\_\_\_





## REFERENCE

(A) P.M. 3-119, S.J.C.R.

## LEGEND

- INDICATES FOUND 3/4" IRON PIPE, NOT TAGGED, NO REFERENCE, ACCEPTED AS LOT CORNER, SET PLASTIC CAP STAMPED LS 4450
- INDICATES SET 1"X2" STAKE WITH TAG STAMPED LS 4450
- P.M. INDICATES PARCEL MAP, BOOK AND PAGE, S.J.C.R.
- M. & P. INDICATES MAPS AND PLATS, VOLUME AND PAGE, S.J.C.R.
- S.J.C.R. INDICATES SAN JOAQUIN COUNTY RECORDS

## NOTE

SET 1"X2" STAKES WITH TAGS STAMPED LS 4450 ON PROPERTY LINE AT RANDOM POSITIONS.