

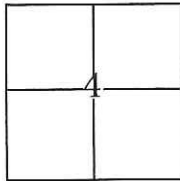
# CORNER RECORD

Document Number CR-16-279

City of Stockton

County of San Joaquin, California

Brief Legal Description Venetian Gardens, Unit No. 1, Book of Maps & Plats Vol. 21, Page 24.



C.M. Weber Grant

### CORNER TYPE

Government Corner  Control   
 Meander  Property   
 Rancho  Other

Date of Survey November 18, 2015

### COORDINATES(Optional)

N. \_\_\_\_\_  
 E. \_\_\_\_\_  
 Zone III NAD27  NAD83   
 NAD83 Epoch 1991.35  
 Elev. \_\_\_\_\_  
 Vert. Datum: NGVD29  NADV88   
 Meas. Units: Metric  Imperial

Corner - Left as found  Found and tagged  Established  Reestablished  Rebuilt

Identification and type of corner found: Evidence used to identify or procedure used to establish or reestablish the corner:

Tied all found centerline monuments to the City of Stockton Horizontal Control. Used conventional survey methods to establish a position on found cut crosses. Evidence identification and field procedure in more detail are shown on page 2.

A description of the physical condition of the monument as found and as set or reset: \_\_\_\_\_

Found 3/4" iron pins, no tags, in monument wells and found cut crosses, no tags, in concrete as shown on page 2.

### SURVEYOR'S STATEMENT

This Corner Record was prepared by me or under my direction in conformance with

the Land Surveyor's Act on April 7, 2016

Signed [Signature] P.L.S. or R.C.E. No.: 7051



### COUNTY SURVEYOR'S STATEMENT

This Corner Record was received June 3, 2016 and examined

and filed June 23, 2016

Signed [Signature] P.L.S. or R.C.E. No.: 4842

Title County Surveyor

County Surveyor's Comment \_\_\_\_\_



### STATEMENT OF PURPOSE:

THE PURPOSE OF THIS SURVEY IS TO IDENTIFY AND RECORD THE LOCATION OF EXISTING MONUMENTS PRIOR TO THE CONSTRUCTION OF PG&E FACILITIES AROUND THE MONUMENTS. THE PURPOSE OF THIS SURVEY IS NOT TO MAKE PROPERTY LINE DETERMINATIONS. LOT LINES SHOWN HEREON ARE FOR GENERAL LOCATION AND INFORMATIONAL PURPOSES ONLY.

### DATUM STATEMENT:

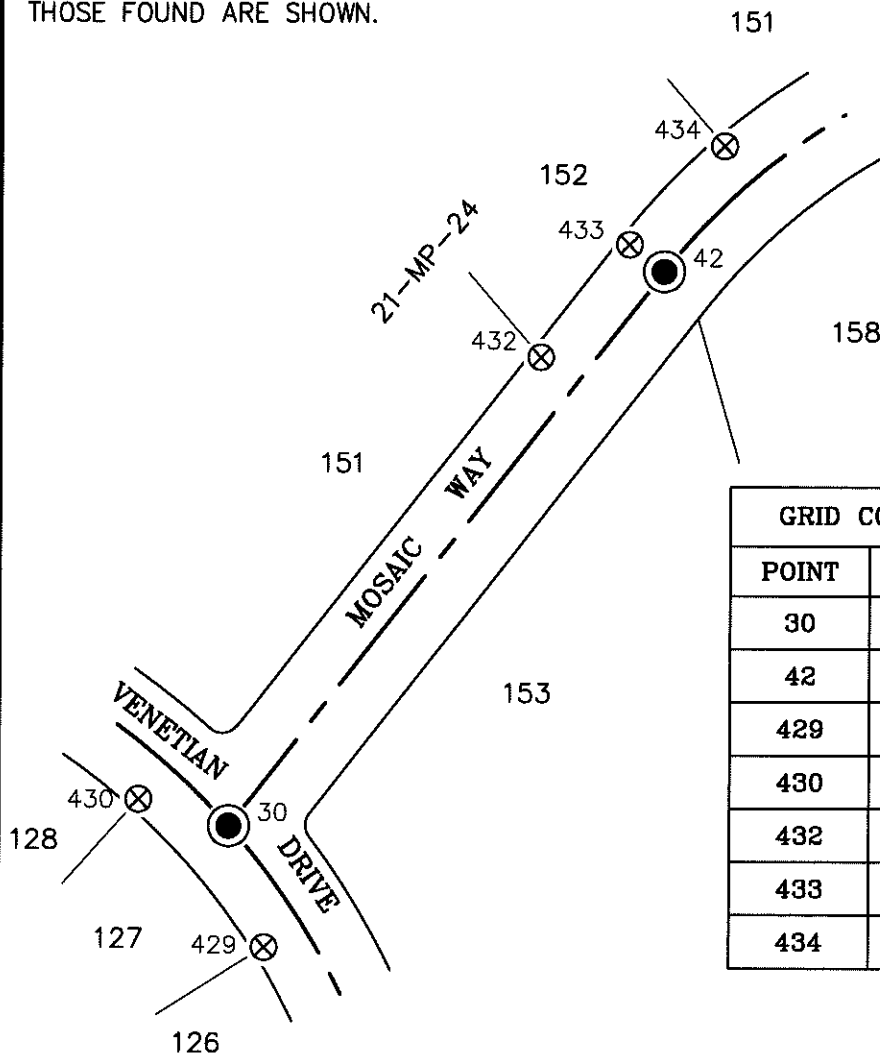
COORDINATES SHOWN HEREON ARE GRID AND ARE BASED ON CITY OF STOCKTON MONUMENTS 235 AND 234, CALIFORNIA COORDINATE SYSTEM (CCS83), ZONE III, 1983 NAD, (1991.35 EPOCH STOCKTON & SAN JOAQUIN COUNTY GPS ADJUSTMENT) AND SHOWN ON RECORD OF SURVEY BOOK 33 OF SURVEYS, PAGE 20. THE PROJECT SPECIFIC COMBINED SCALE FACTOR IS 0.99993816.

### LEGEND:

- ⊗ INDICATES FOUND CUT CROSS, NO TAG.
- INDICATES FOUND 3/4" IRON PIN, NO TAG IN MONUMENT WELL

### NOTE:

FIELD EFFORT INCLUDED A SEARCH FOR EXISTING CUT CROSSES AT THEIR TYPICAL LOCATION, ONLY THOSE FOUND ARE SHOWN.



GRID COORDINATES (U.S. SURVEY FEET)		
POINT	NORTHING	EASTING
30	2184122.32'	6323432.67'
42	2184422.79'	6323667.39'
429	2184057.11'	6323451.96'
430	2184136.78'	6323384.18'
432	2184376.32'	6323600.57'
433	2184437.57'	6323648.49'
434	2184491.10'	6323699.63'