

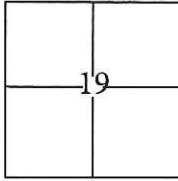
CORNER RECORD

Document Number CR-16-270

City of Ripon

County of San Joaquin, California

Brief Legal Description Johnson's Addition, Volume 09 of Maps & Plats, Page 60



T. 2 S., R. 8 E. M.D.B. & M.

CORNER TYPE

Government Corner Control
 Meander Property
 Rancho Other

Date of Survey March 10, 2016

COORDINATES(Optional)

N. _____
 E. _____
 Zone III NAD27 NAD83
 NAD83 Epoch 1991.35
 Elev. _____
 Vert. Datum: NGVD29 NADV88
 Meas. Units: Metric Imperial

Corner - Left as found Found and tagged Established Reestablished Rebuilt

Identification and type of corner found: Evidence used to identify or procedure used to establish or reestablish the corner:

Established coordinates on all found monuments by the use of G.P.S. methods. Tied all found monuments to the City of Ripon G.P.S. Survey Control Network. Evidence identification and field procedure in more detail as shown on page 2.

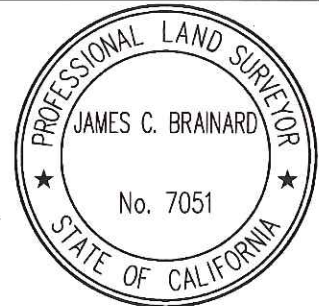
A description of the physical condition of the monument as found and as set or reset: _____

Found cut crosses on concrete and a 5/8" rebar with a plastic cap stamped "LS 4124" as shown on page 2.

SURVEYOR'S STATEMENT

This Corner Record was prepared by me or under my direction in conformance with the Land Surveyor's Act on March 14, 2016.

Signed [Signature] P.L.S. or R.C.E. No.: 7051



COUNTY SURVEYOR'S STATEMENT

This Corner Record was received June 3, 2016 and examined and filed June 23, 2016.

Signed [Signature] P.L.S. or R.C.E. No.: 4842

Title County Surveyor

County Surveyor's Comment _____



STATEMENT OF PURPOSE:

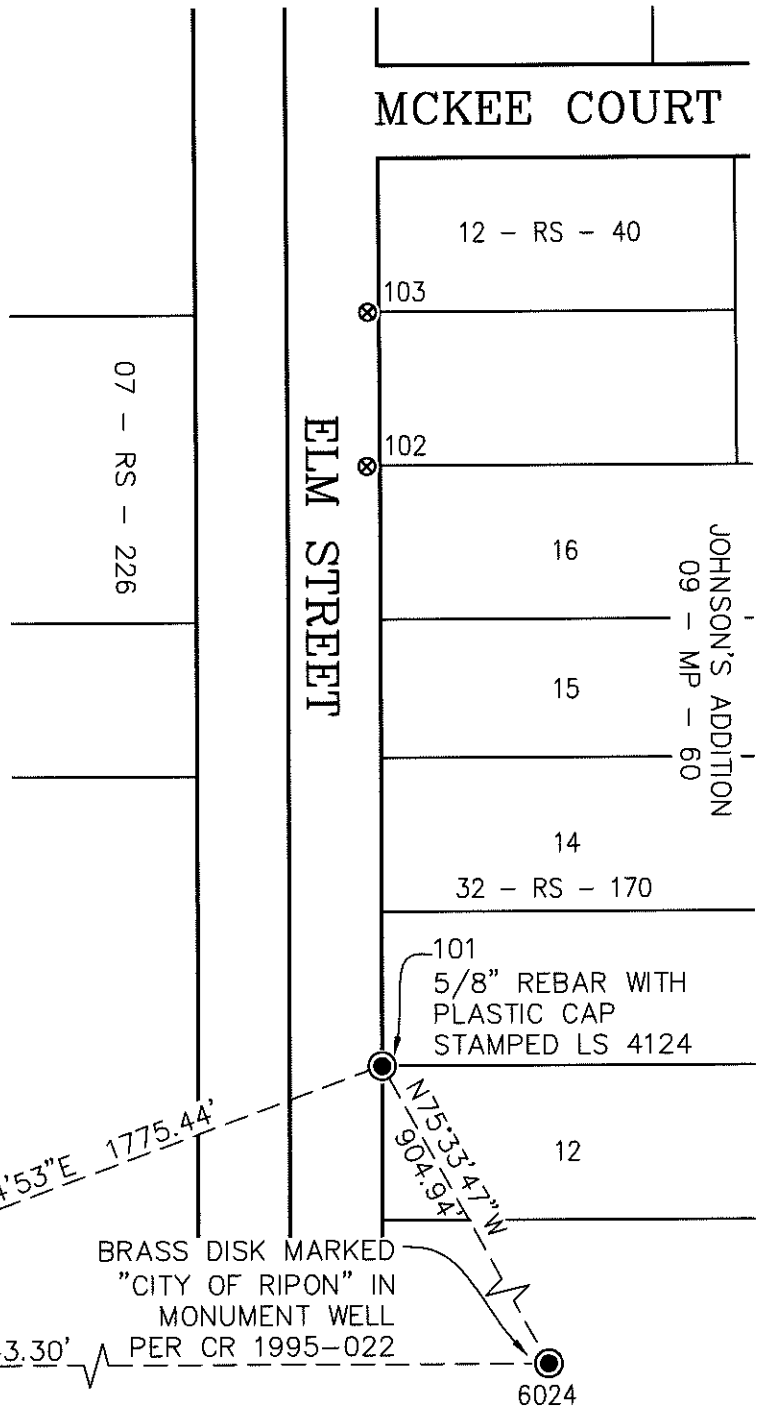
THE PURPOSE OF THIS SURVEY IS TO IDENTIFY AND RECORD THE LOCATION OF EXISTING MONUMENTS PRIOR TO PG&E IMPROVEMENTS. NO CLAIM IS MADE AS TO THE RELATIONSHIP OF THE MONUMENTS SHOWN HEREON TO THE EXISTING PROPERTY LINES. ORIGINAL LOT LINES SHOWN ARE FOR GENERAL LOCATION AND INFORMATIONAL PURPOSES ONLY.

DATUM STATEMENT:

COORDINATES SHOWN HEREON ARE GRID AND ARE BASED ON CITY OF RIPON MONUMENTS 6024 AND 6025, CALIFORNIA COORDINATE SYSTEM (CCS83), ZONE III, 1983 NAD, (CITY OF RIPON G.P.S. SURVEY CONTROL NETWORK) AS SHOWN ON RECORD OF SURVEY BOOK 35 OF SURVEYS, PAGE 196. DISTANCES SHOWN ARE GRID. THE PROJECT SPECIFIC SCALE FACTOR IS 0.99992920.

LEGEND:

- ⊗ INDICATES FOUND CUT CROSS, NO TAG.
- INDICATES FOUND MONUMENT AS NOTED



GRID COORDINATES (U.S. SURVEY FEET)		
POINT	NORTHING	EASTING
101	2092505.52'	6380369.54'
102	2092700.48'	6380368.74'
103	2092750.48'	6380370.26'