

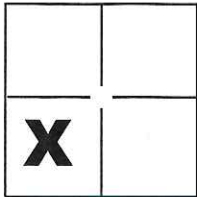
CORNER RECORD

Document Number CR-16-266

City of Stockton

County of San Joaquin, California

Brief Legal Description Northeast corner of Lot 3 per M. & P. 23-15, S.J.C.R.



CORNER TYPE

Government Corner Control
 Meander Property
 Rancho Other

COORDINATES(Optional)

N. _____
 E. _____
 Zone _____ NAD27 NAD83
 NAD83 Epoch _____
 Elev. _____
 Vert. Datum: NGVD29 NADV88
 Meas. Units: Metric Imperial

Sec. 8, T.2N., R.6E.,
M.D.B. & M.

Date of Survey May 11, 2016

Corner - Left as found Found and tagged Established Reestablished Rebuilt

Identification and type of corner found: Evidence used to identify or procedure used to establish or reestablish the corner:

See Sheet 2

A description of the physical condition of the monument as found and as set or reset: _____

This is the Pre-Construction Corner Record

See Sheet 2

SURVEYOR'S STATEMENT

This Corner Record was prepared by me or under my direction in conformance with the Land Surveyor's Act on May 13, 2016.

Signed Michael L. Quartaroli P.L.S. or R.C.E. No.: L.S. 4450



COUNTY SURVEYOR'S STATEMENT

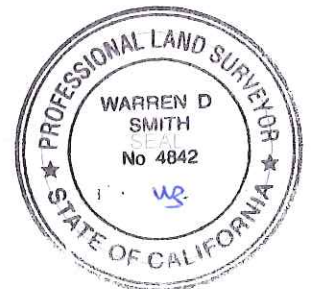
This Corner Record was received June 13, 2016 and examined

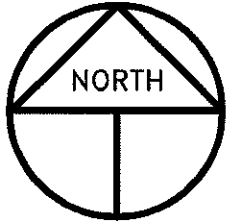
and filed June 23, 2016.

Signed Warren D. Smith P.L.S. or R.C.E. No.: 4842

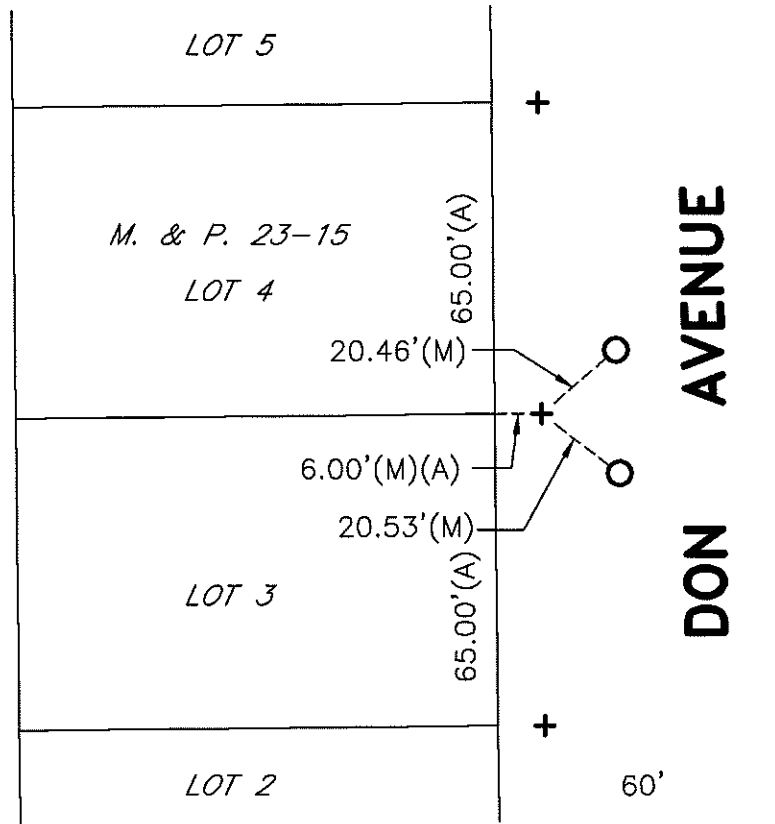
Title County Surveyor

County Surveyor's Comment _____





SCALE: 1" = 40'
2016-101



REFERENCE

(A) M. & P. 23-15, S.J.C.R.

LEGEND

- + INDICATES FOUND CHISELED CROSS WITNESS CORNER PER (A)
- INDICATES SET MAGNETIC NAIL W/BRASS TAG STAMPED LS 4450
- M. & P. INDICATES MAPS AND PLATS, VOLUME AND PAGE, S.J.C.R.
- S.J.C.R. INDICATES SAN JOAQUIN COUNTY RECORDS
- (M) INDICATES MEASURED ON THIS SURVEY