

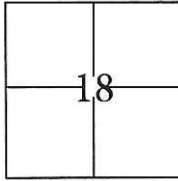
# CORNER RECORD

Document Number CR-16-247

City of Stockton

County of San Joaquin, California

Brief Legal Description Colonial Estates, Unit No. 2, Volume 20 of Maps & Plats, Page 31.



### CORNER TYPE

Government Corner  Control   
 Meander  Property   
 Rancho  Other

### COORDINATES(Optional)

N. \_\_\_\_\_  
 E. \_\_\_\_\_  
 Zone III NAD27  NAD83   
 NAD83 Epoch 1991.35  
 Elev. \_\_\_\_\_  
 Vert. Datum: NGVD29  NADV88   
 Meas. Units: Metric  Imperial

T. 2 N., R. 6 E., M.D.B.&M.

Date of Survey December 18, 2015

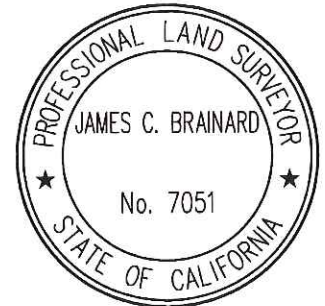
Corner - Left as found  Found and tagged  Established  Reestablished  Rebuilt

Identification and type of corner found: Evidence used to identify or procedure used to establish or reestablish the corner:  
Used conventional survey methods and CR 16-078 to reestablish the position of the obliterated cut cross, as shown on page 2.

A description of the physical condition of the monument as found and as set or reset: \_\_\_\_\_  
Set cut cross with brass tags stamped L.S. 7051 in concrete. Also, found 3/4" iron pipes tagged R.C.E. 15831 in monument wells as shown on page 2.

### SURVEYOR'S STATEMENT

This Corner Record was prepared by me or under my direction in conformance with the Land Surveyor's Act on December 22, 2015.  
 Signed [Signature] P.L.S. or R.C.E. No.: 7051



### COUNTY SURVEYOR'S STATEMENT

This Corner Record was received May 16, 2016 and examined and filed June 9, 2016.  
 Signed [Signature] P.L.S. or R.C.E. No.: 4842



Title County Surveyor  
 County Surveyor's Comment \_\_\_\_\_

## STATEMENT OF PURPOSE:

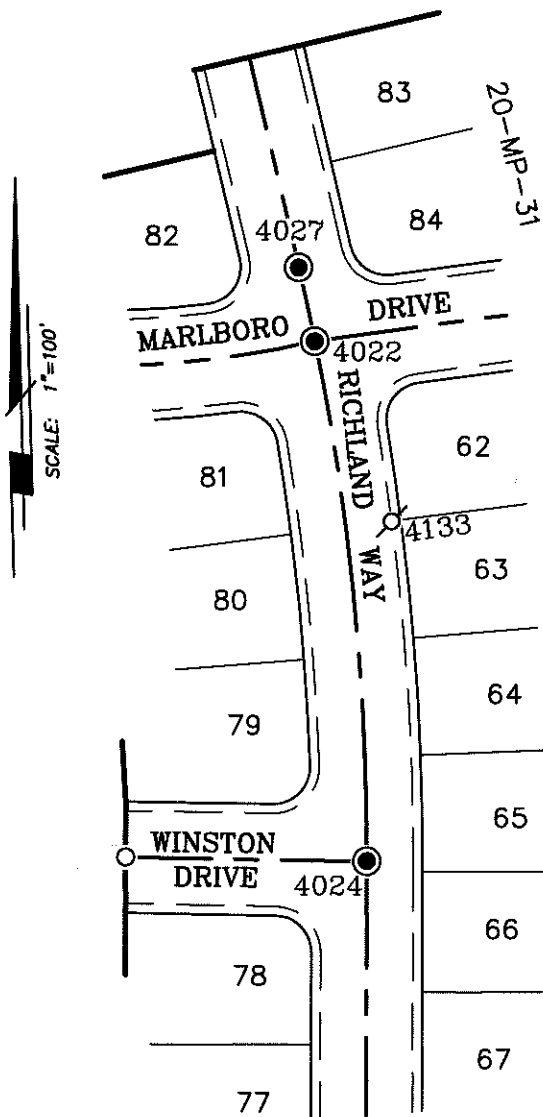
THE PURPOSE OF THIS SURVEY IS TO RECORD AND REESTABLISH THE LOCATION OF MONUMENTS ORIGINALLY SHOWN ON CR 16-078 DISTURBED AFTER THE CONSTRUCTION OF UNDERGROUND IMPROVEMENTS. THE PURPOSE OF THIS SURVEY IS NOT TO MAKE PROPERTY LINE DETERMINATIONS. LOT LINES SHOWN HEREON ARE FOR GENERAL LOCATION AND INFORMATIONAL PURPOSES ONLY.

## LEGEND:

- ⊙ INDICATES SET BRASS TAG STAMPED L.S. 7051.
- INDICATES 3/4" IRON PIPE TAGGED 15831 IN MONUMENT WELL
- INDICATES SEARCHED FOR RECORD MONUMENT, NOT FOUND

## DATUM STATEMENT:

COORDINATES SHOWN HEREON ARE GRID AND ARE BASED ON CITY OF STOCKTON MONUMENTS 4N-16 AND 1N-7, CALIFORNIA COORDINATE SYSTEM (CCS83), ZONE III, 1983 NAD, (1991.35 EPOCH STOCKTON & SAN JOAQUIN COUNTY GPS ADJUSTMENT) AND SHOWN ON RECORD OF SURVEY BOOK 33 OF SURVEYS, PAGE 20. THE PROJECT SPECIFIC COMBINED SCALE FACTOR IS 0.99994066.



GRID COORDINATES (U.S. SURVEY FEET)		
POINT	NORTHING	EASTING
4022	2196180.20'	6316363.40'
4023	2196219.99'	6316354.36'
4024	2195898.81'	6316392.42'
4133	2196082.70'	6316405.39'